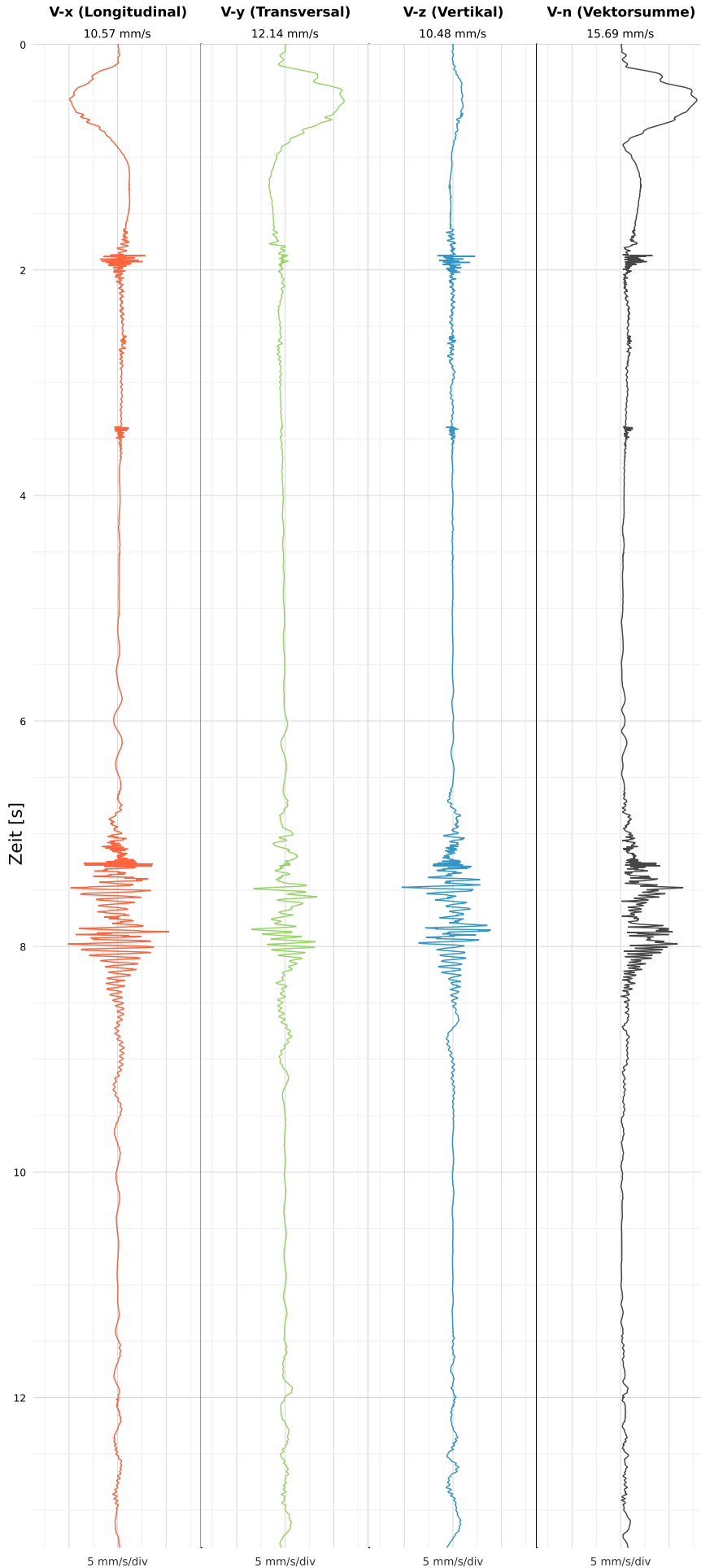


SCHWINGGESCHWINDIGKEIT



DATEI: 2496-HF15-30052026-150057_raw.csv

Aufzeichnungsdauer: 13.33 s | Abtastrate: 1000 Hz

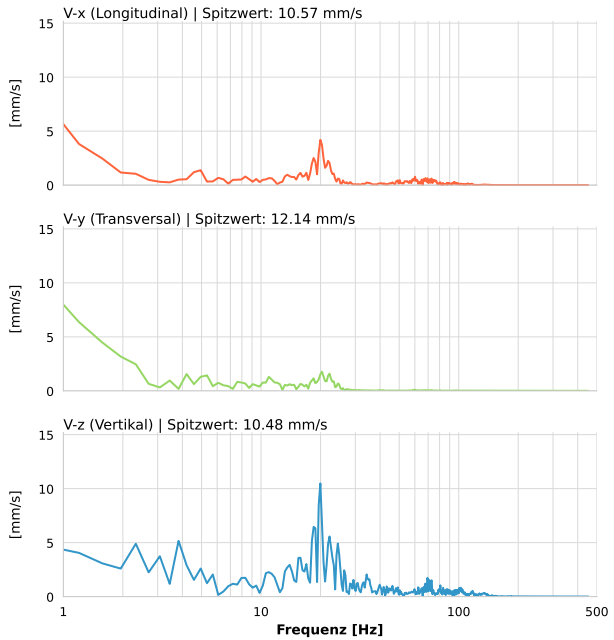
| | |
|------------------|---------------------------|
| Datum: | 30.05.2026 |
| Zeit: | 15:00:57 |
| Event-ID: | 2496-HF15-30052026-150057 |
| Kalibrier Datum: | 10.07.2025 |

Spitzwerte

| V-x (Longitudinal) | V-y (Transversal) | V-z (Vertikal) |
|--------------------|-------------------|-------------------|
| 10.57 mm/s | 12.14 mm/s | 10.48 mm/s |
| 0.3 Hz | 0.5 Hz | 20.1 Hz |
| 211.48% von Limit | 242.90% von Limit | 139.24% von Limit |

V-n (Vektorsumme): 15.69 mm/s

SPEKTRALANALYSE - KOMPONENTEN FFT



| Kanal | Spitzwert | Spektrum 25% | Spektrum 50% | Spektrum 75% |
|-------|------------|--------------|--------------|--------------|
| X | 10.57 mm/s | 4.6 Hz | 20.0 Hz | 57.5 Hz |
| Y | 12.14 mm/s | 0.8 Hz | 4.6 Hz | 19.2 Hz |
| Z | 10.48 mm/s | 14.7 Hz | 23.0 Hz | 66.5 Hz |

SPEKTRALANALYSE - FFT (DIN 4150-3)

