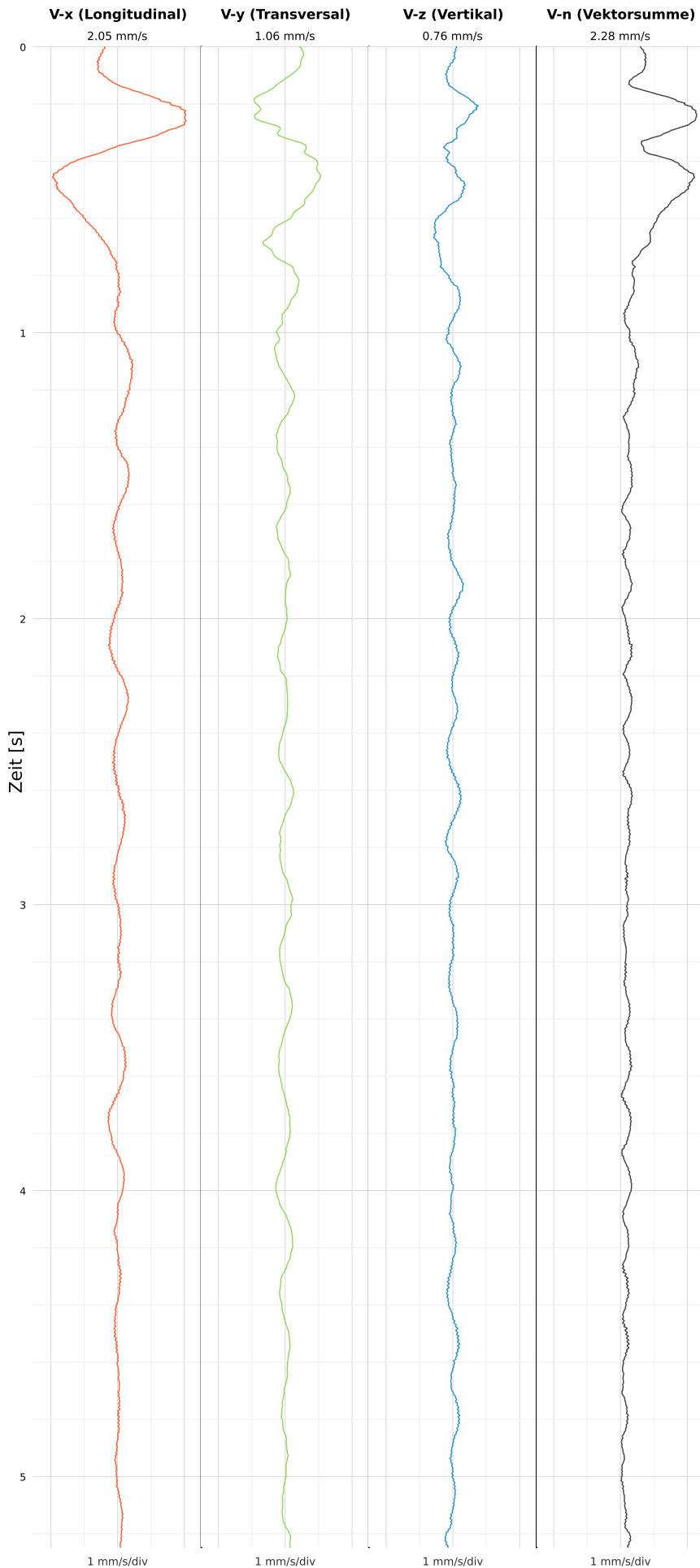


SCHWINGGESCHWINDIGKEIT



DATEI: 2496-HF15-30052026-145941_raw.csv

Aufzeichnungsdauer: 5.25 s | Abtastrate: 1000 Hz

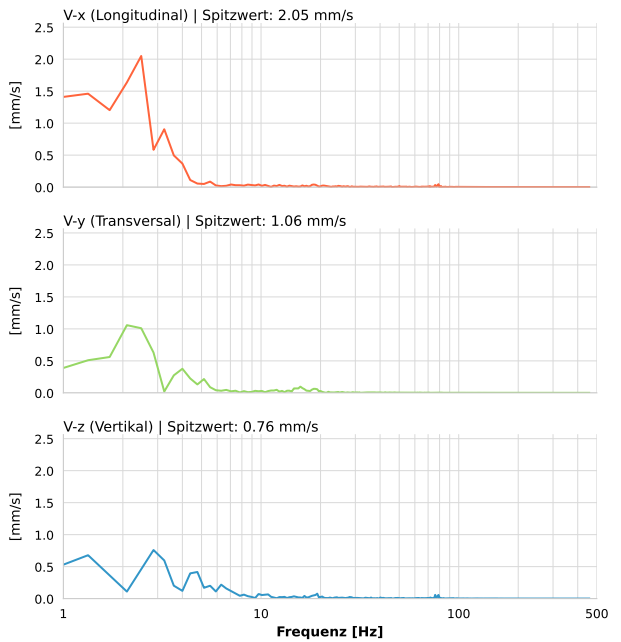
| | |
|-------------------------|---------------------------|
| Datum: | 30.05.2026 |
| Zeit: | 14:59:41 |
| Event-ID: | 2496-HF15-30052026-145941 |
| Kalibrier Datum: | 10.07.2025 |

Spitzwerte

| V-x (Longitudinal) | V-y (Transversal) | V-z (Vertikal) |
|--------------------|-------------------|------------------|
| 2.05 mm/s | 1.06 mm/s | 0.76 mm/s |
| 2.5 Hz | 2.7 Hz | 3.0 Hz |
| 41.00% von Limit | 21.16% von Limit | 15.19% von Limit |

V-n (Vektorsumme): 2.28 mm/s

SPEKTRALANALYSE - KOMPONENTEN FFT



| Kanal | Spitzwert | Spektrum 25% | Spektrum 50% | Spektrum 75% |
|-------|-----------|--------------|--------------|--------------|
| X | 2.05 mm/s | 1.3 Hz | 2.5 Hz | 4.0 Hz |
| Y | 1.06 mm/s | 2.1 Hz | 2.9 Hz | 14.3 Hz |
| Z | 0.76 mm/s | 2.5 Hz | 4.8 Hz | 23.1 Hz |

SPEKTRALANALYSE - FFT (DIN 4150-3)

