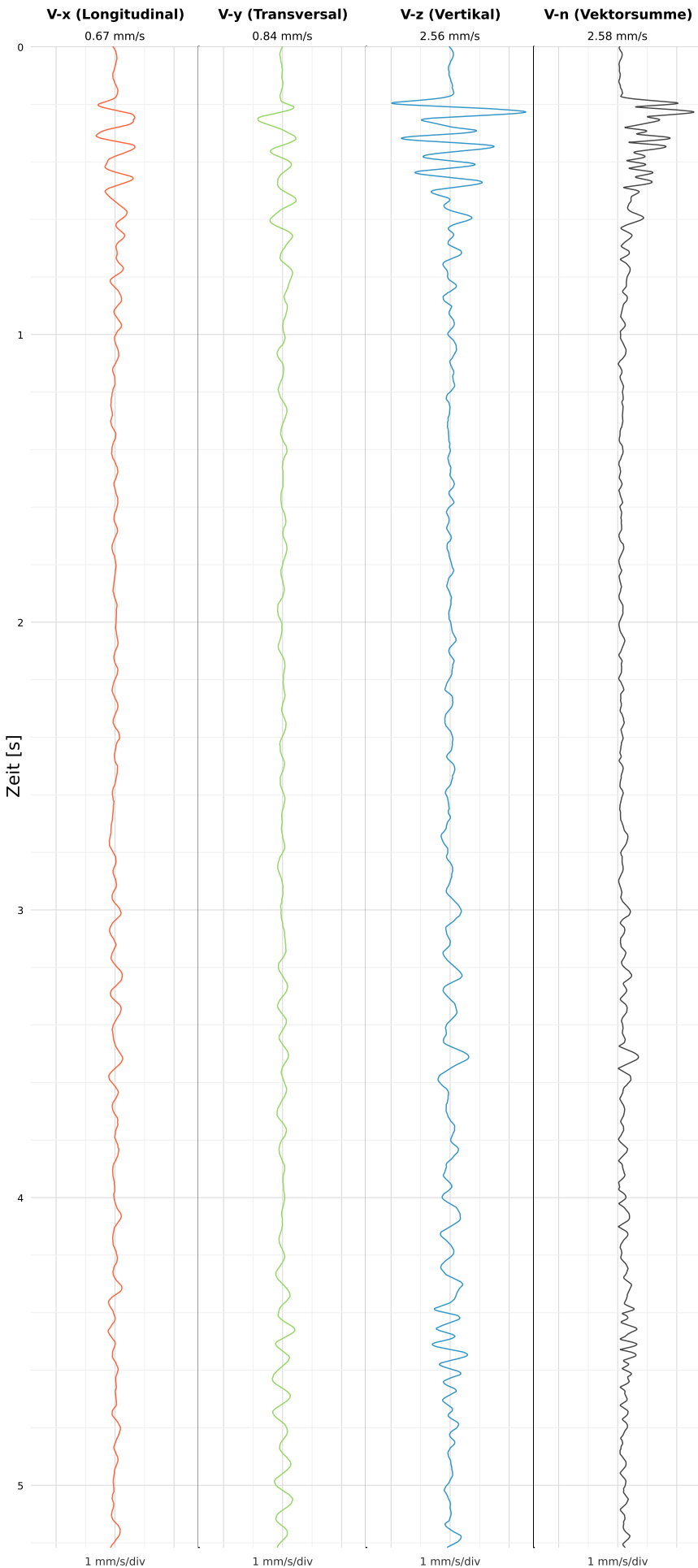


SCHWINGGESCHWINDIGKEIT



DATEI: 2495-WG14-23052026-174846_raw.csv

Aufzeichnungsdauer: 5.22 s | Abtastrate: 1000 Hz

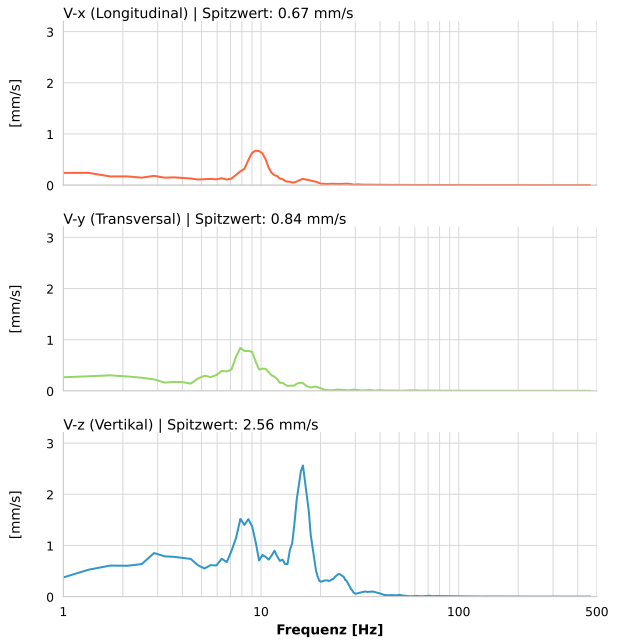
| | |
|------------------|---------------------------|
| Datum: | 23.05.2026 |
| Zeit: | 17:48:46 |
| Event-ID: | 2495-WG14-23052026-174846 |
| Kalibrier Datum: | 12.07.2025 |

Spitzwerte

| V-x (Longitudinal) | V-y (Transversal) | V-z (Vertikal) |
|--------------------|-------------------|------------------|
| 0.67 mm/s | 0.84 mm/s | 2.56 mm/s |
| 9.8 Hz | 8.4 Hz | 15.7 Hz |
| 13.49% von Limit | 16.77% von Limit | 39.86% von Limit |

V-n (Vektorsumme): 2.58 mm/s

SPEKTRALANALYSE - KOMPONENTEN FFT



| Kanal | Spitzwert | Spektrum 25% | Spektrum 50% | Spektrum 75% |
|-------|-----------|--------------|--------------|--------------|
| X | 0.67 mm/s | 6.7 Hz | 9.8 Hz | 13.6 Hz |
| Y | 0.84 mm/s | 6.3 Hz | 8.6 Hz | 13.6 Hz |
| Z | 2.56 mm/s | 8.2 Hz | 15.1 Hz | 17.8 Hz |

SPEKTRALANALYSE - FFT (DIN 4150-3)

