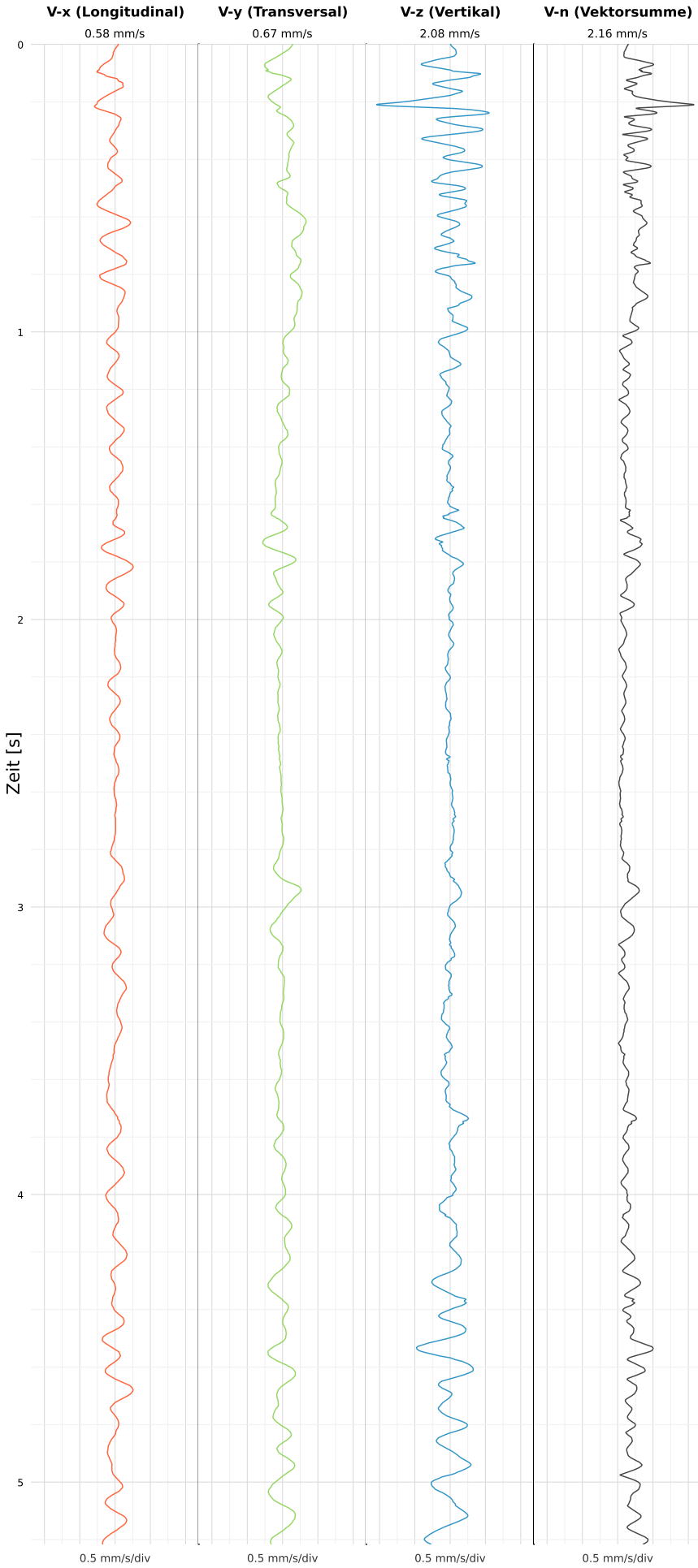


SCHWINGGESCHWINDIGKEIT



DATEI: 2495-WG14-22052026-142608_raw.csv

Aufzeichnungsdauer: 5.22 s | Abtastrate: 1000 Hz

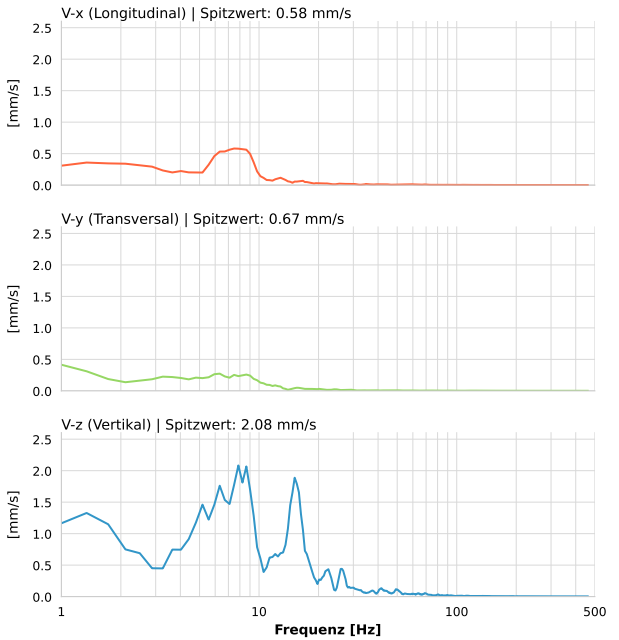
| | |
|------------------|---------------------------|
| Datum: | 22.05.2026 |
| Zeit: | 14:26:08 |
| Event-ID: | 2495-WG14-22052026-142608 |
| Kalibrier Datum: | 12.07.2025 |

Spitzwerte

| V-x (Longitudinal) | V-y (Transversal) | V-z (Vertikal) |
|--------------------|-------------------|------------------|
| 0.58 mm/s | 0.67 mm/s | 2.08 mm/s |
| 8.4 Hz | 0.4 Hz | 8.6 Hz |
| 11.62% von Limit | 13.31% von Limit | 41.65% von Limit |

V-n (Vektorsumme): 2.16 mm/s

SPEKTRALANALYSE - KOMPONENTEN FFT



| Kanal | Spitzwert | Spektrum 25% | Spektrum 50% | Spektrum 75% |
|-------|-----------|--------------|--------------|--------------|
| X | 0.58 mm/s | 5.2 Hz | 8.2 Hz | 18.2 Hz |
| Y | 0.67 mm/s | 3.3 Hz | 7.9 Hz | 20.9 Hz |
| Z | 2.08 mm/s | 7.1 Hz | 13.6 Hz | 22.4 Hz |

SPEKTRALANALYSE - FFT (DIN 4150-3)

