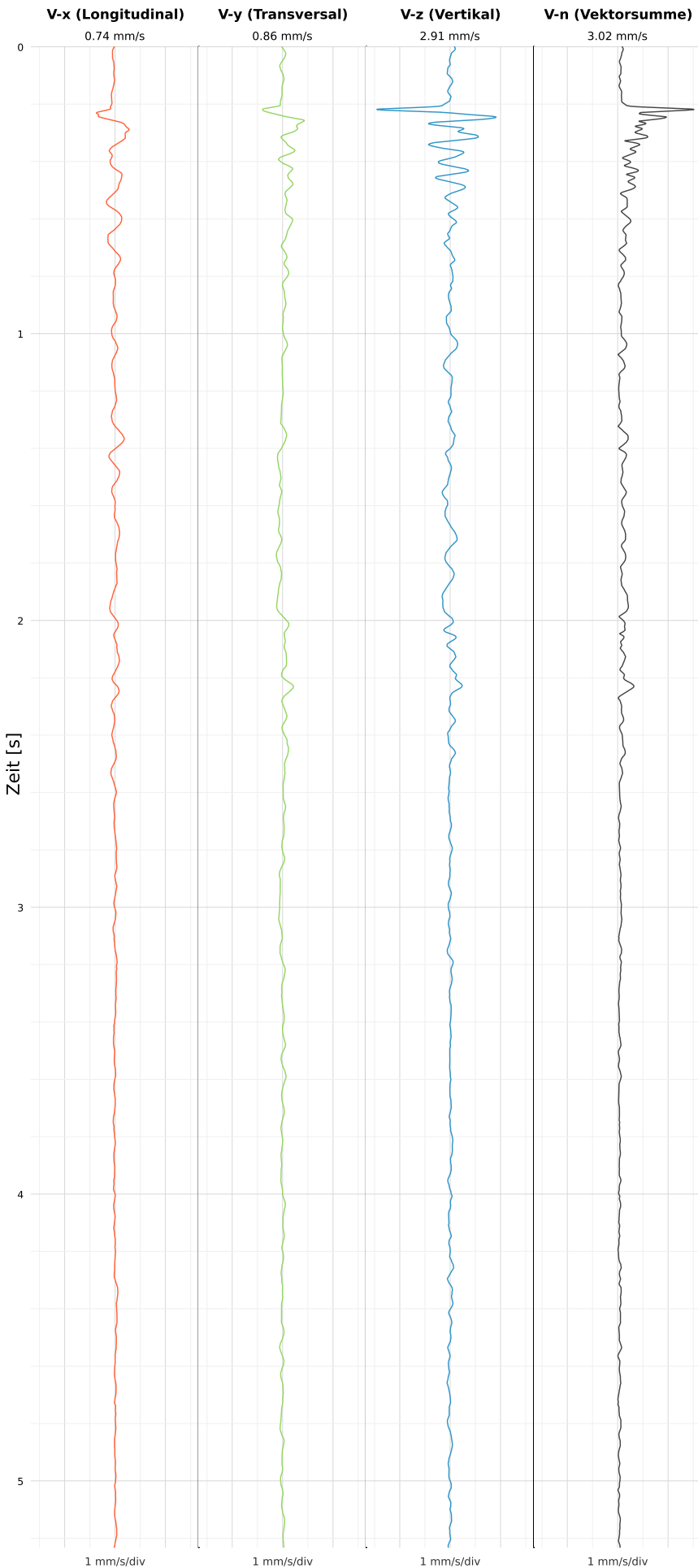


SCHWINGGESCHWINDIGKEIT



DATEI: 2495-WG14-22052026-132049_raw.csv

Aufzeichnungsdauer: 5.23 s | Abtastrate: 1000 Hz

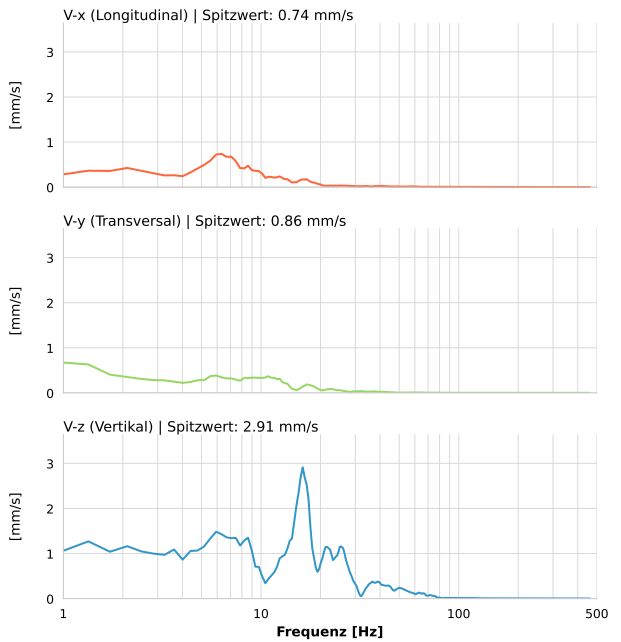
| | |
|------------------|---------------------------|
| Datum: | 22.05.2026 |
| Zeit: | 13:20:49 |
| Event-ID: | 2495-WG14-22052026-132049 |
| Kalibrier Datum: | 12.07.2025 |

Spitzwerte

| V-x (Longitudinal) | V-y (Transversal) | V-z (Vertikal) |
|--------------------|-------------------|------------------|
| 0.74 mm/s | 0.86 mm/s | 2.91 mm/s |
| 6.5 Hz | 0.6 Hz | 16.6 Hz |
| 14.78% von Limit | 17.27% von Limit | 43.70% von Limit |

V-n (Vektorsumme): 3.02 mm/s

SPEKTRALANALYSE - KOMPONENTEN FFT



| Kanal | Spitzwert | Spektrum 25% | Spektrum 50% | Spektrum 75% |
|-------|-----------|--------------|--------------|--------------|
| X | 0.74 mm/s | 5.5 Hz | 7.8 Hz | 15.1 Hz |
| Y | 0.86 mm/s | 3.6 Hz | 9.4 Hz | 17.0 Hz |
| Z | 2.91 mm/s | 9.4 Hz | 17.4 Hz | 28.5 Hz |

SPEKTRALANALYSE - FFT (DIN 4150-3)

