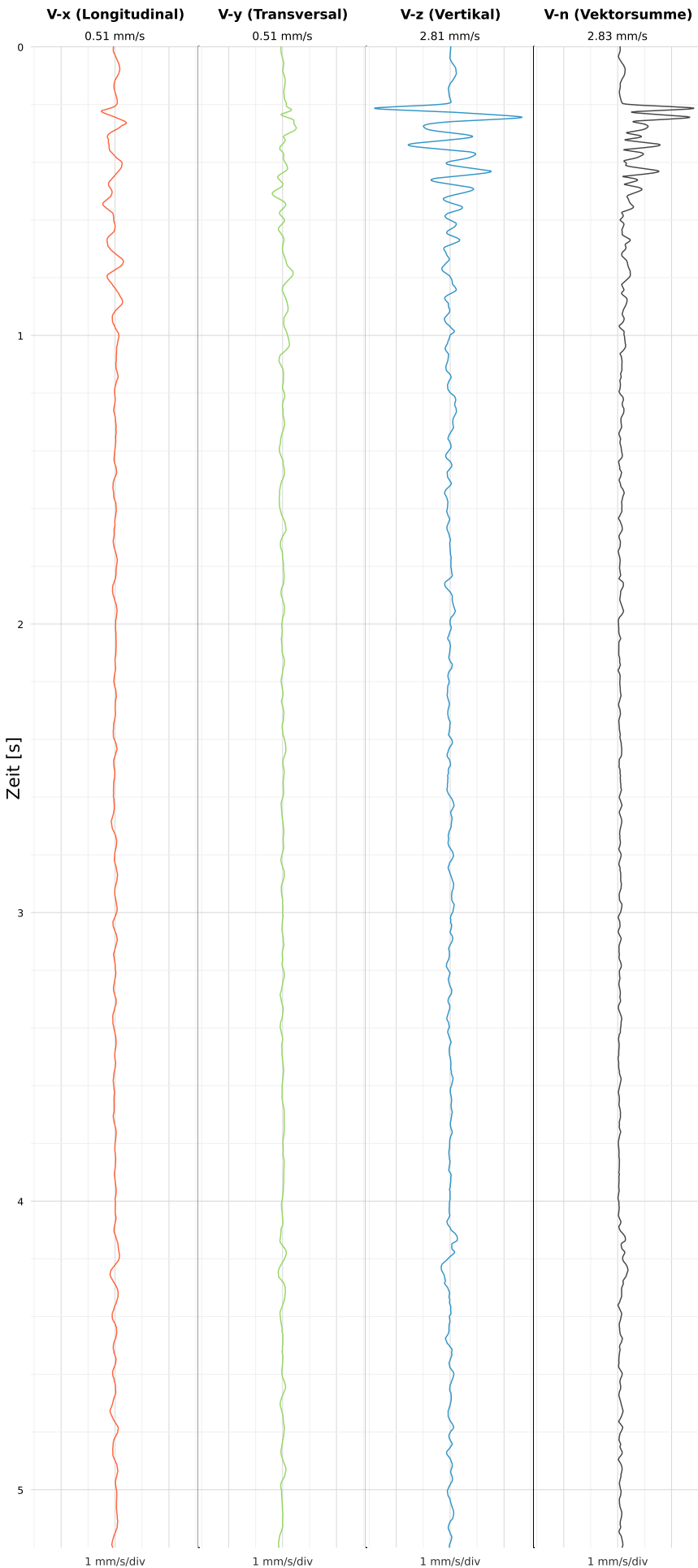


SCHWINGGESCHWINDIGKEIT



DATEI: 2495-WG14-22052026-130923_raw.csv

Aufzeichnungsdauer: 5.20 s | Abtastrate: 1000 Hz

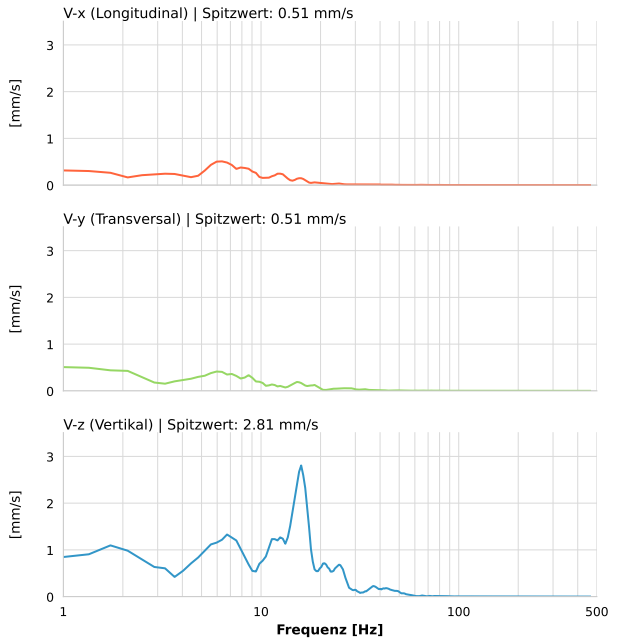
| | |
|------------------|---------------------------|
| Datum: | 22.05.2026 |
| Zeit: | 13:09:23 |
| Event-ID: | 2495-WG14-22052026-130923 |
| Kalibrier Datum: | 12.07.2025 |

Spitzwerte

| V-x (Longitudinal) | V-y (Transversal) | V-z (Vertikal) |
|--------------------|-------------------|------------------|
| 0.51 mm/s | 0.51 mm/s | 2.81 mm/s |
| 1.0 Hz | 1.3 Hz | 16.5 Hz |
| 10.16% von Limit | 10.21% von Limit | 42.29% von Limit |

V-n (Vektorsumme): 2.83 mm/s

SPEKTRALANALYSE - KOMPONENTEN FFT



| Kanal | Spitzwert | Spektrum 25% | Spektrum 50% | Spektrum 75% |
|-------|-----------|--------------|--------------|--------------|
| X | 0.51 mm/s | 5.6 Hz | 8.3 Hz | 14.4 Hz |
| Y | 0.51 mm/s | 4.4 Hz | 8.3 Hz | 18.3 Hz |
| Z | 2.81 mm/s | 9.0 Hz | 15.2 Hz | 21.3 Hz |

SPEKTRALANALYSE - FFT (DIN 4150-3)

