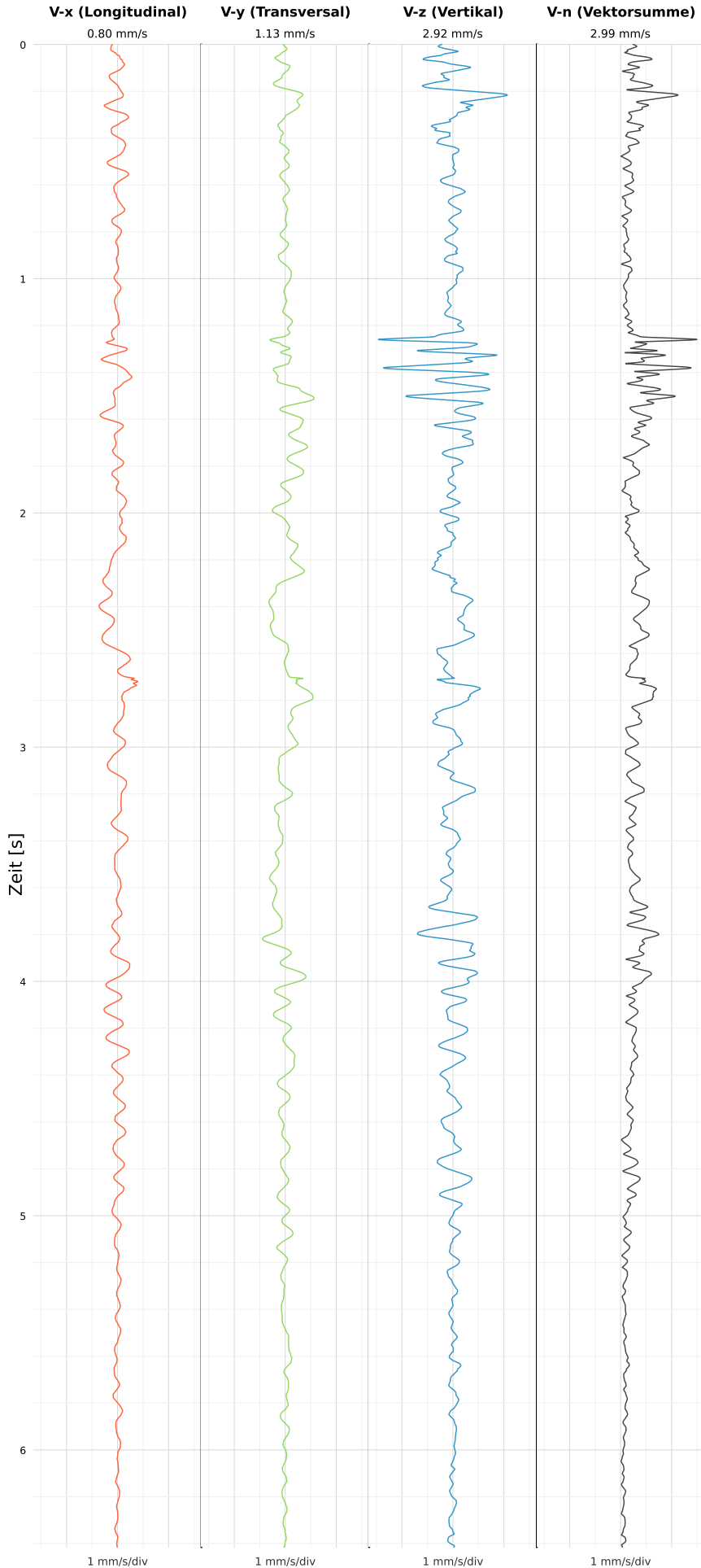


SCHWINGGESCHWINDIGKEIT



DATEI: 2495-WG14-22052026-130849\_raw.csv

Aufzeichnungsdauer: 6.42 s | Abtastrate: 1000 Hz

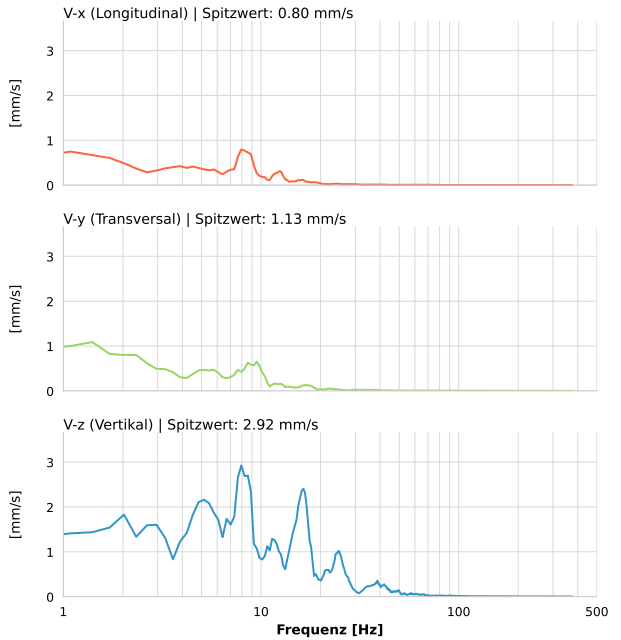
|                  |                           |
|------------------|---------------------------|
| Datum:           | 22.05.2026                |
| Zeit:            | 13:08:49                  |
| Event-ID:        | 2495-WG14-22052026-130849 |
| Kalibrier Datum: | 12.07.2025                |

Spitzwerte

| V-x (Longitudinal) | V-y (Transversal) | V-z (Vertikal)   |
|--------------------|-------------------|------------------|
| 0.80 mm/s          | 1.13 mm/s         | 2.92 mm/s        |
| 8.3 Hz             | 0.8 Hz            | 8.3 Hz           |
| 15.92% von Limit   | 22.53% von Limit  | 58.49% von Limit |

V-n (Vektorsumme): 2.99 mm/s

SPEKTRALANALYSE - KOMPONENTEN FFT



| Kanal | Spitzwert | Spektrum 25% | Spektrum 50% | Spektrum 75% |
|-------|-----------|--------------|--------------|--------------|
| X     | 0.80 mm/s | 3.3 Hz       | 7.9 Hz       | 12.3 Hz      |
| Y     | 1.13 mm/s | 2.0 Hz       | 6.4 Hz       | 10.8 Hz      |
| Z     | 2.92 mm/s | 6.7 Hz       | 14.2 Hz      | 23.5 Hz      |

SPEKTRALANALYSE - FFT (DIN 4150-3)

