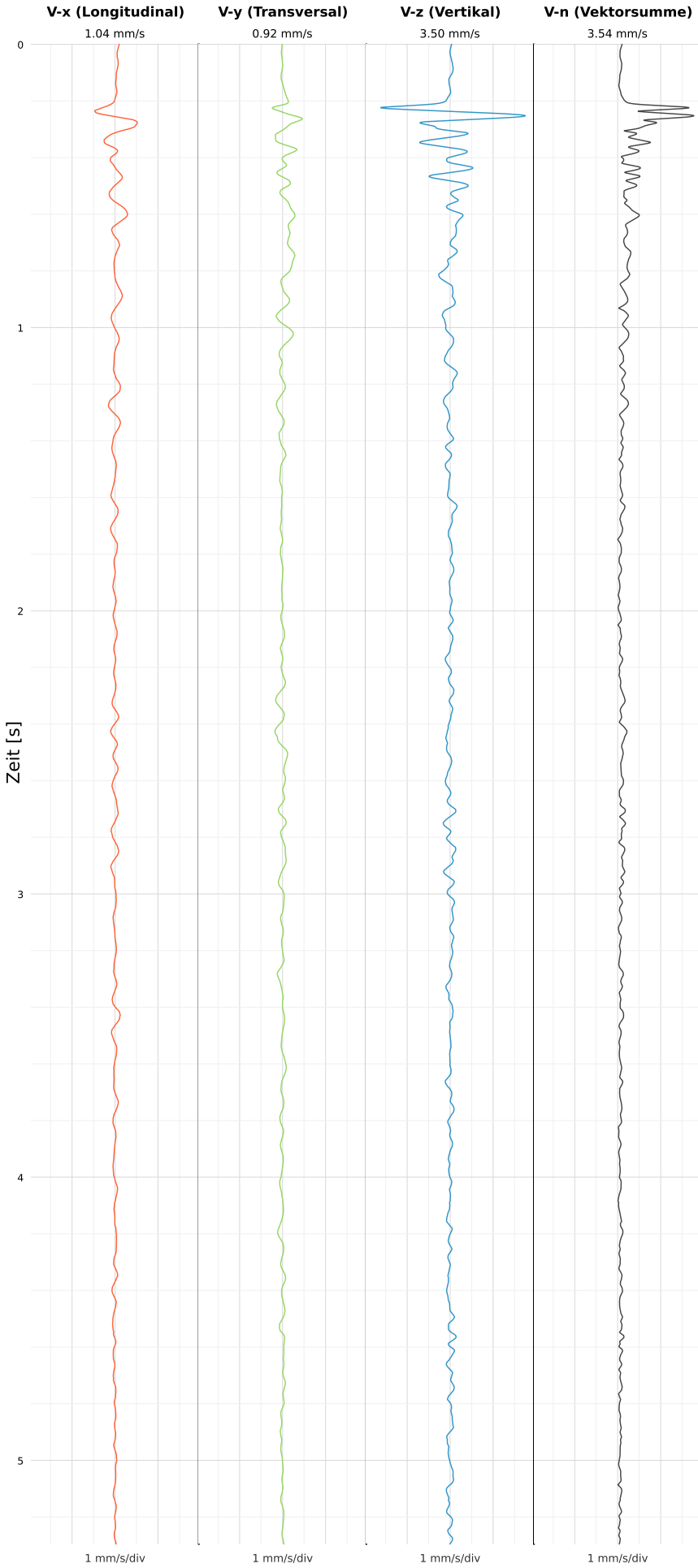


SCHWINGGESCHWINDIGKEIT



DATEI: 2495-WG14-22052026-121933_raw.csv

Aufzeichnungsdauer: 5.30 s | Abtastrate: 1000 Hz

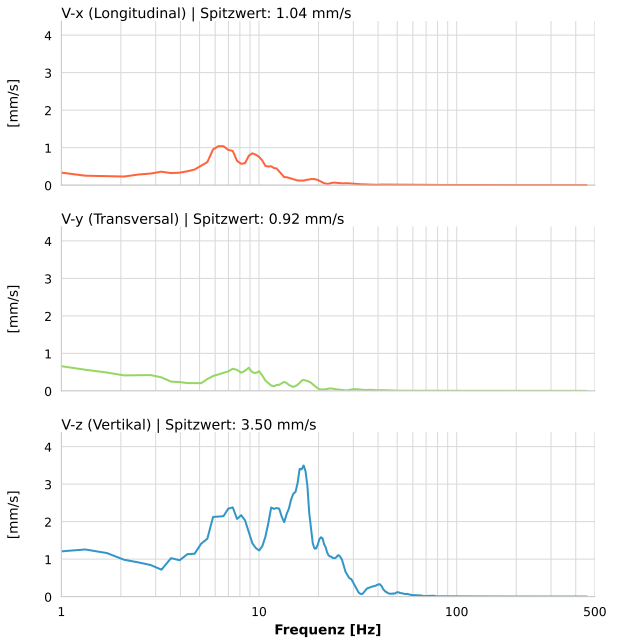
| | |
|------------------|---------------------------|
| Datum: | 22.05.2026 |
| Zeit: | 12:19:33 |
| Event-ID: | 2495-WG14-22052026-121933 |
| Kalibrier Datum: | 12.07.2025 |

Spitzwerte

| V-x (Longitudinal) | V-y (Transversal) | V-z (Vertikal) |
|--------------------|-------------------|------------------|
| 1.04 mm/s | 0.92 mm/s | 3.50 mm/s |
| 6.6 Hz | 0.4 Hz | 16.2 Hz |
| 20.78% von Limit | 18.43% von Limit | 53.32% von Limit |

V-n (Vektorsumme): 3.54 mm/s

SPEKTRALANALYSE - KOMPONENTEN FFT



| Kanal | Spitzwert | Spektrum 25% | Spektrum 50% | Spektrum 75% |
|-------|-----------|--------------|--------------|--------------|
| X | 1.04 mm/s | 6.2 Hz | 9.3 Hz | 13.8 Hz |
| Y | 0.92 mm/s | 3.2 Hz | 8.5 Hz | 16.0 Hz |
| Z | 3.50 mm/s | 8.9 Hz | 15.3 Hz | 21.3 Hz |

SPEKTRALANALYSE - FFT (DIN 4150-3)

