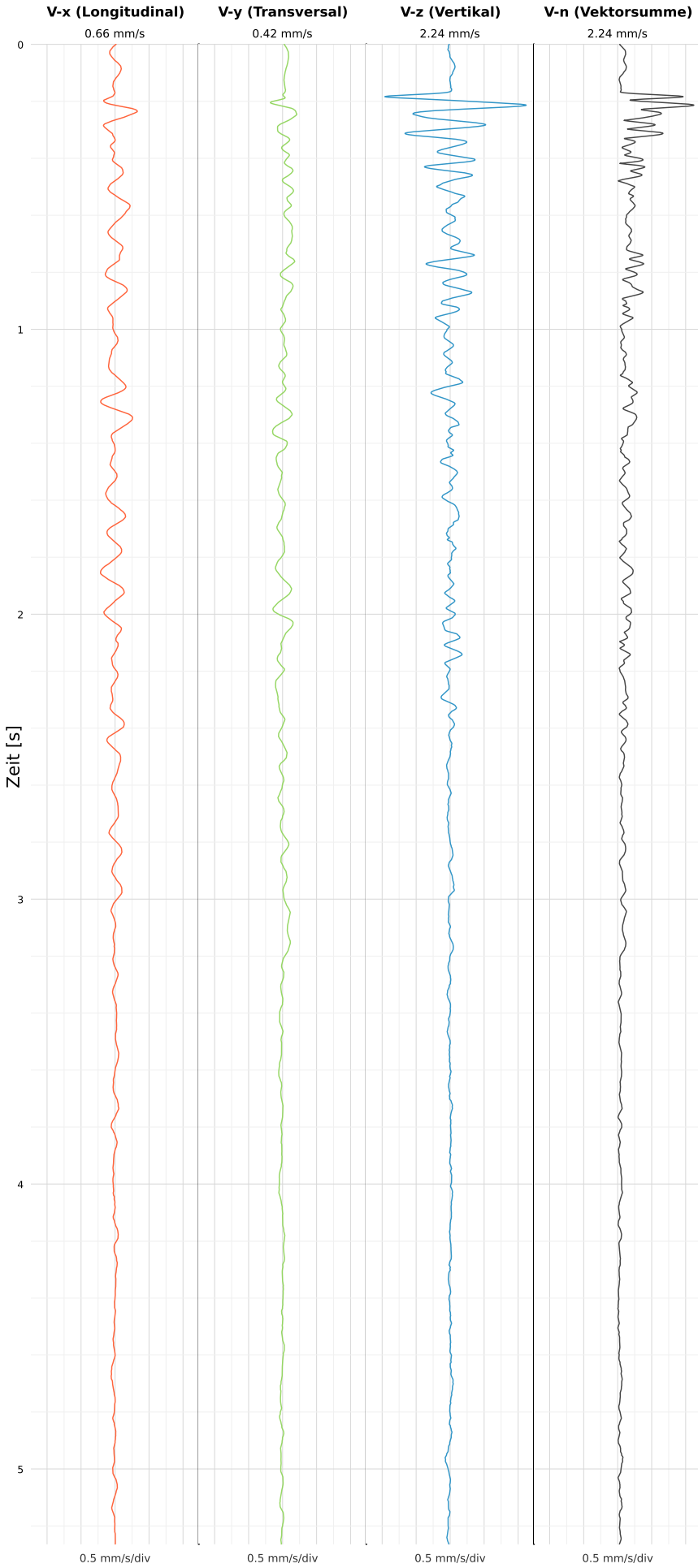


SCHWINGGESCHWINDIGKEIT



DATEI: 2495-WG14-22052026-115314_raw.csv

Aufzeichnungsdauer: 5.26 s | Abtastrate: 1000 Hz

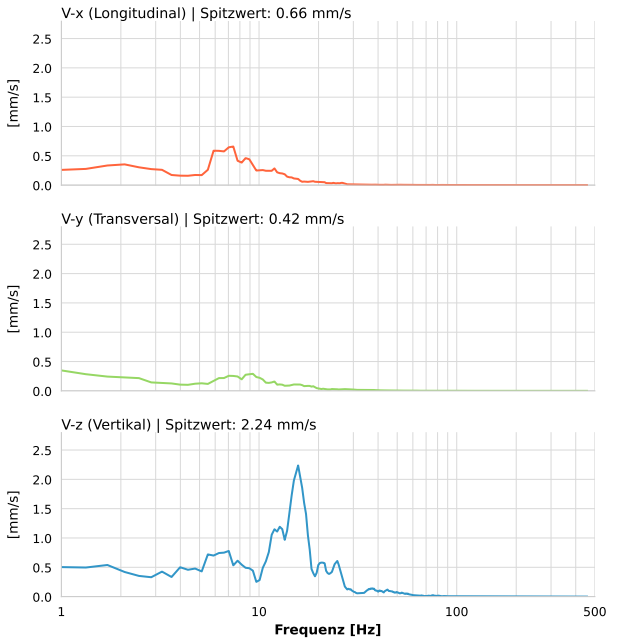
| | |
|------------------|---------------------------|
| Datum: | 22.05.2026 |
| Zeit: | 11:53:14 |
| Event-ID: | 2495-WG14-22052026-115314 |
| Kalibrier Datum: | 12.07.2025 |

Spitzwerte

| V-x (Longitudinal) | V-y (Transversal) | V-z (Vertikal) |
|--------------------|-------------------|------------------|
| 0.66 mm/s | 0.42 mm/s | 2.24 mm/s |
| 6.6 Hz | 0.4 Hz | 15.6 Hz |
| 13.16% von Limit | 8.37% von Limit | 34.98% von Limit |

V-n (Vektorsumme): 2.24 mm/s

SPEKTRALANALYSE - KOMPONENTEN FFT



| Kanal | Spitzwert | Spektrum 25% | Spektrum 50% | Spektrum 75% |
|-------|-----------|--------------|--------------|--------------|
| X | 0.66 mm/s | 6.3 Hz | 8.2 Hz | 12.7 Hz |
| Y | 0.42 mm/s | 4.4 Hz | 9.3 Hz | 16.9 Hz |
| Z | 2.24 mm/s | 11.6 Hz | 15.4 Hz | 21.5 Hz |

SPEKTRALANALYSE - FFT (DIN 4150-3)

