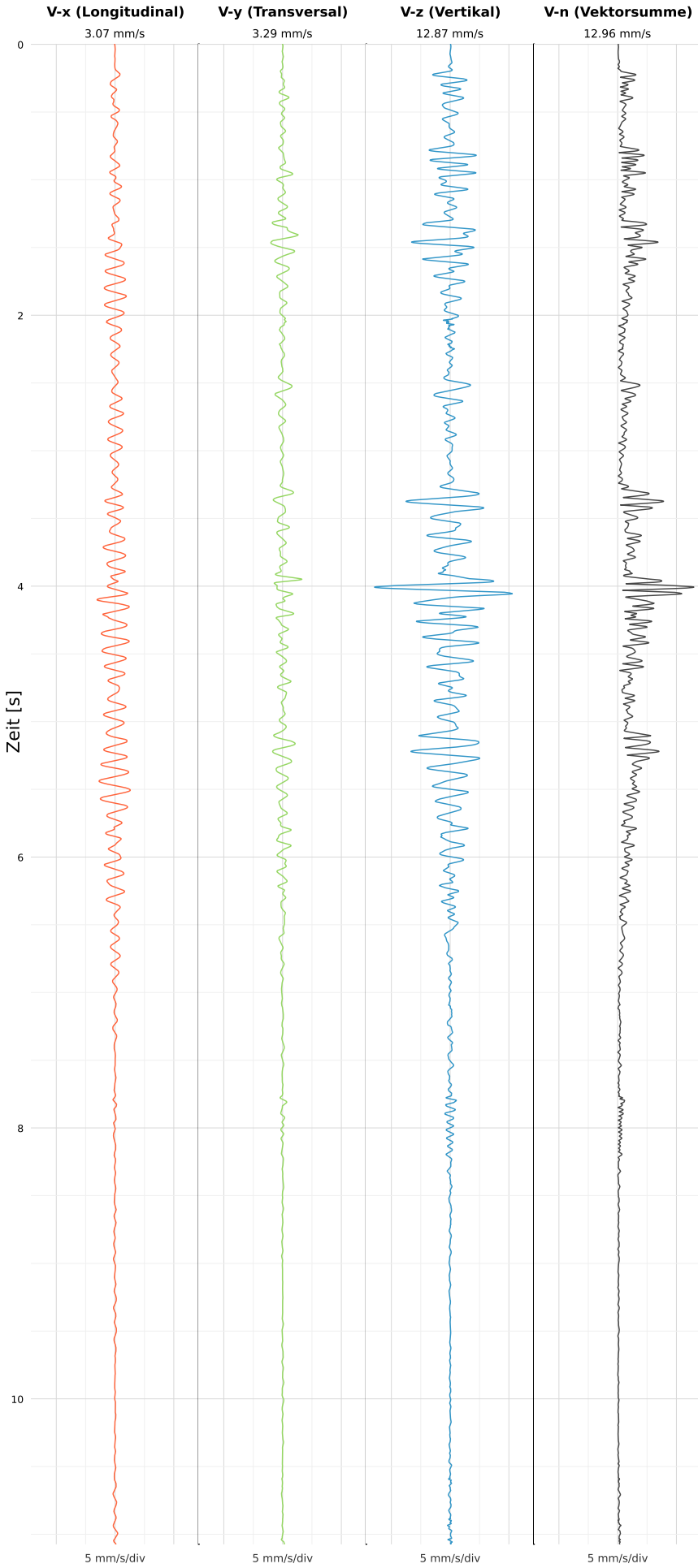


SCHWINGGESCHWINDIGKEIT



DATEI: 2495-WG14-22052026-113955_raw.csv

Aufzeichnungsdauer: 11.07 s | Abtastrate: 1000 Hz

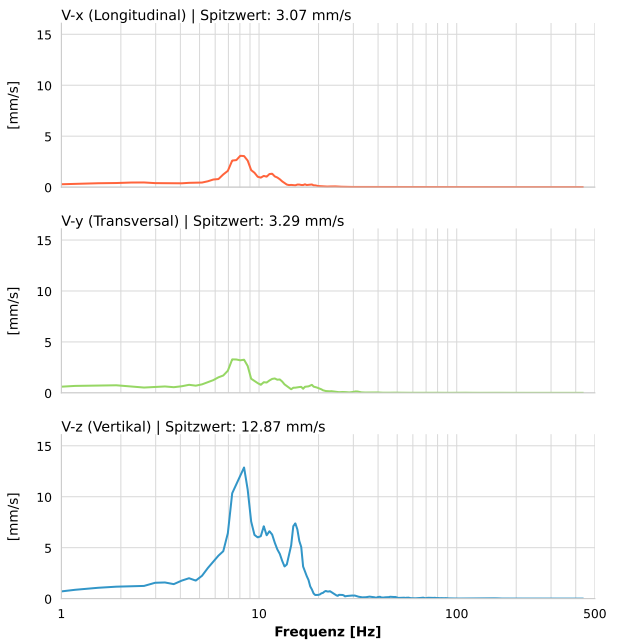
| | |
|------------------|---------------------------|
| Datum: | 22.05.2026 |
| Zeit: | 11:39:55 |
| Event-ID: | 2495-WG14-22052026-113955 |
| Kalibrier Datum: | 12.07.2025 |

Spitzwerte

| V-x (Longitudinal) | V-y (Transversal) | V-z (Vertikal) |
|--------------------|-------------------|-------------------|
| 3.07 mm/s | 3.29 mm/s | 12.87 mm/s |
| 8.2 Hz | 7.9 Hz | 8.2 Hz |
| 61.49% von Limit | 65.74% von Limit | 257.43% von Limit |

V-n (Vektorsumme): 12.96 mm/s

SPEKTRALANALYSE - KOMPONENTEN FFT



| Kanal | Spitzwert | Spektrum 25% | Spektrum 50% | Spektrum 75% |
|-------|------------|--------------|--------------|--------------|
| X | 3.07 mm/s | 7.3 Hz | 8.8 Hz | 12.0 Hz |
| Y | 3.29 mm/s | 7.0 Hz | 9.1 Hz | 15.6 Hz |
| Z | 12.87 mm/s | 8.0 Hz | 10.9 Hz | 15.3 Hz |

SPEKTRALANALYSE - FFT (DIN 4150-3)

