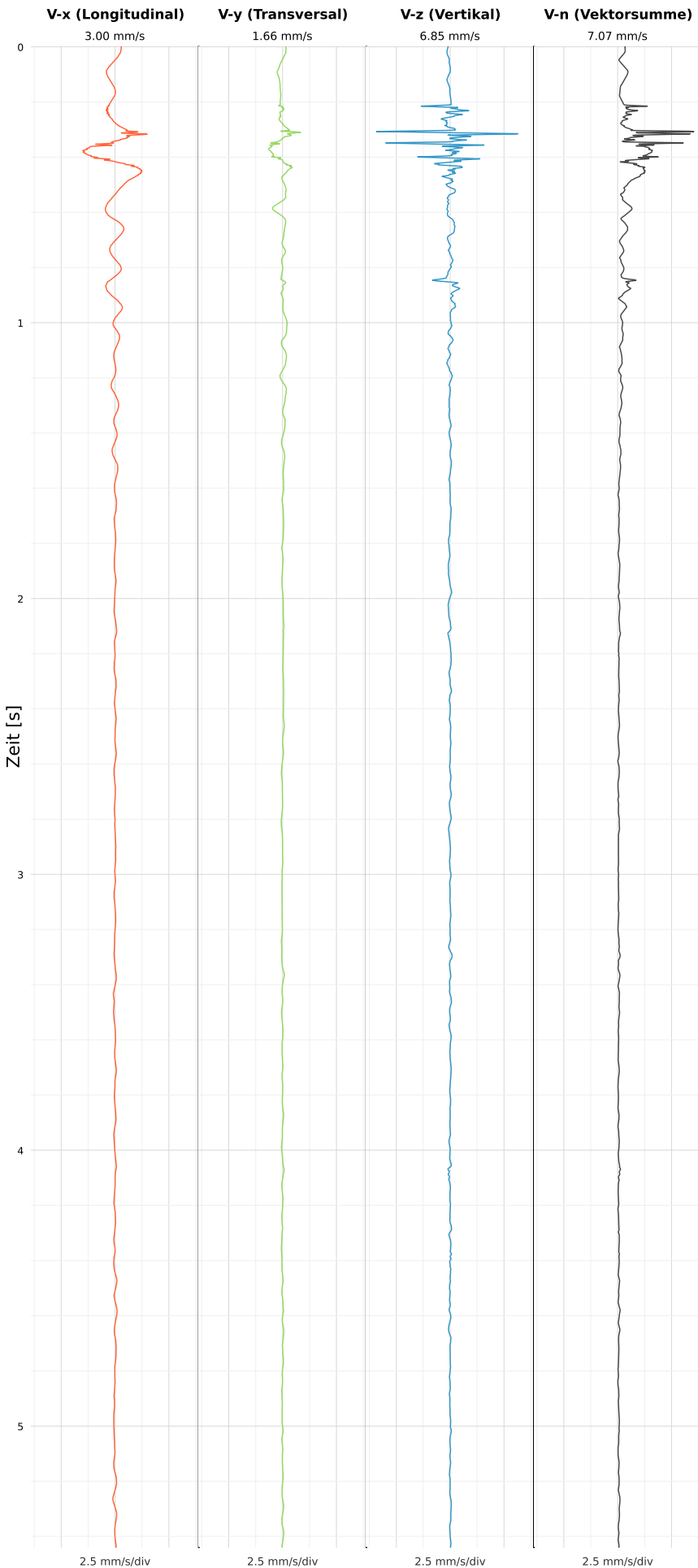


SCHWINGGESCHWINDIGKEIT



DATEI: 2495-WG14-22052026-113618\_raw.csv

Aufzeichnungsdauer: 5.44 s | Abtastrate: 1000 Hz

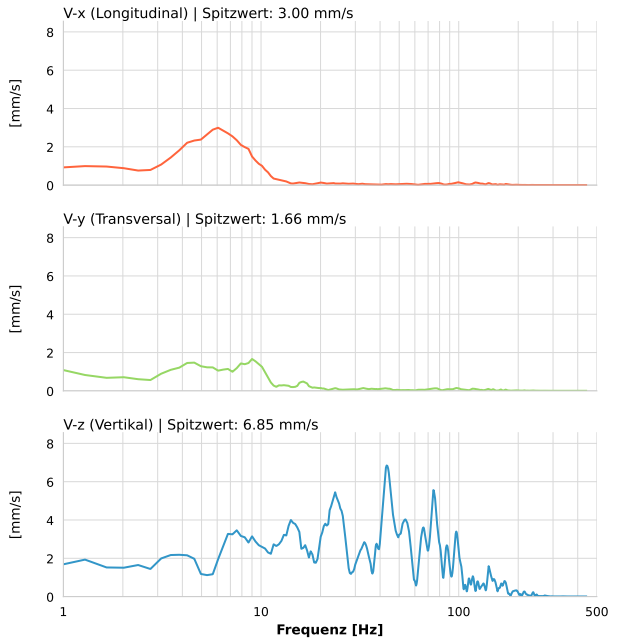
|                  |                           |
|------------------|---------------------------|
| Datum:           | 22.05.2026                |
| Zeit:            | 11:36:18                  |
| Event-ID:        | 2495-WG14-22052026-113618 |
| Kalibrier Datum: | 12.07.2025                |

Spitzwerte

| V-x (Longitudinal) | V-y (Transversal) | V-z (Vertikal)   |
|--------------------|-------------------|------------------|
| 3.00 mm/s          | 1.66 mm/s         | 6.85 mm/s        |
| 6.1 Hz             | 8.5 Hz            | 42.8 Hz          |
| 59.91% von Limit   | 33.29% von Limit  | 51.84% von Limit |

V-n (Vektorsumme): 7.07 mm/s

SPEKTRALANALYSE - KOMPONENTEN FFT



| Kanal | Spitzwert | Spektrum 25% | Spektrum 50% | Spektrum 75% |
|-------|-----------|--------------|--------------|--------------|
| X     | 3.00 mm/s | 5.7 Hz       | 8.6 Hz       | 82.5 Hz      |
| Y     | 1.66 mm/s | 6.4 Hz       | 15.6 Hz      | 94.7 Hz      |
| Z     | 6.85 mm/s | 32.9 Hz      | 57.5 Hz      | 92.1 Hz      |

SPEKTRALANALYSE - FFT (DIN 4150-3)

