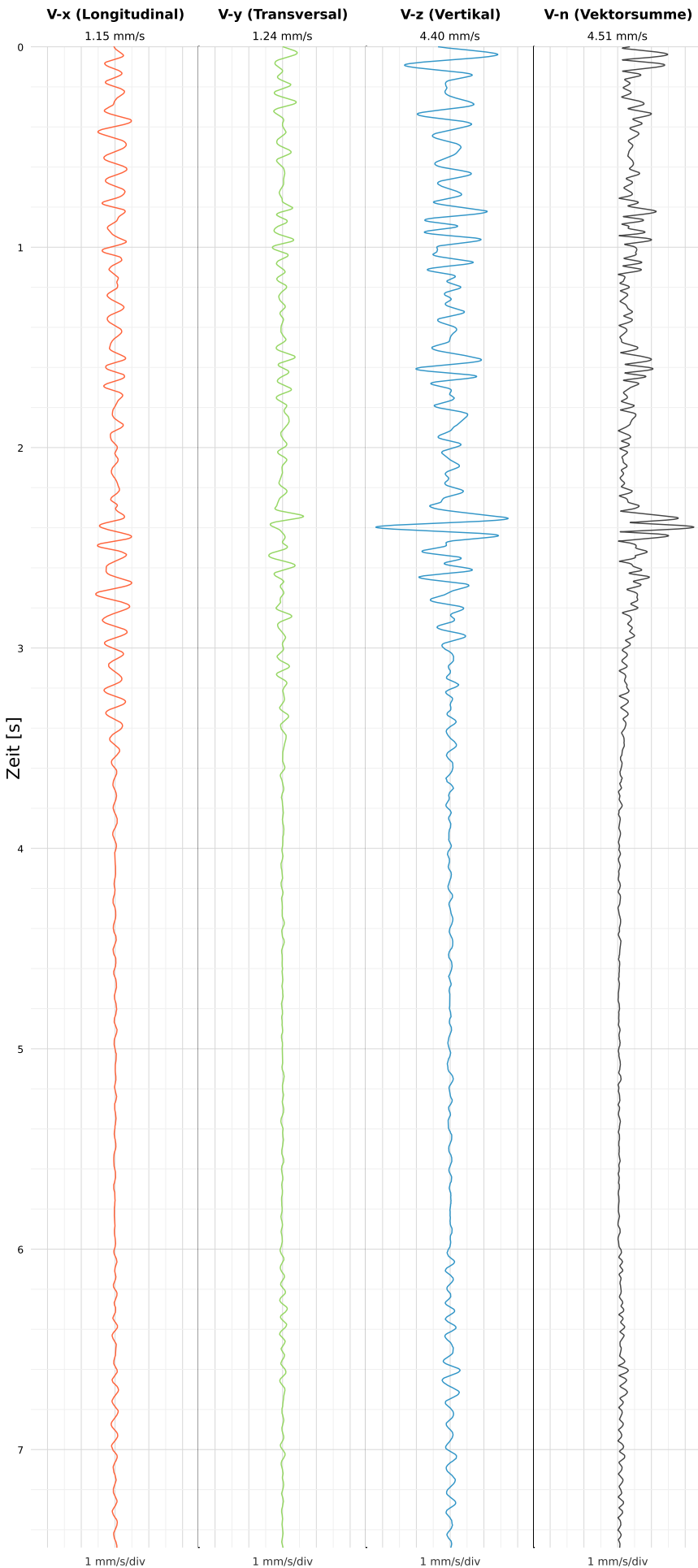


SCHWINGGESCHWINDIGKEIT



DATEI: 2495-WG14-22052026-113248_raw.csv

Aufzeichnungsdauer: 7.49 s | Abtastrate: 1000 Hz

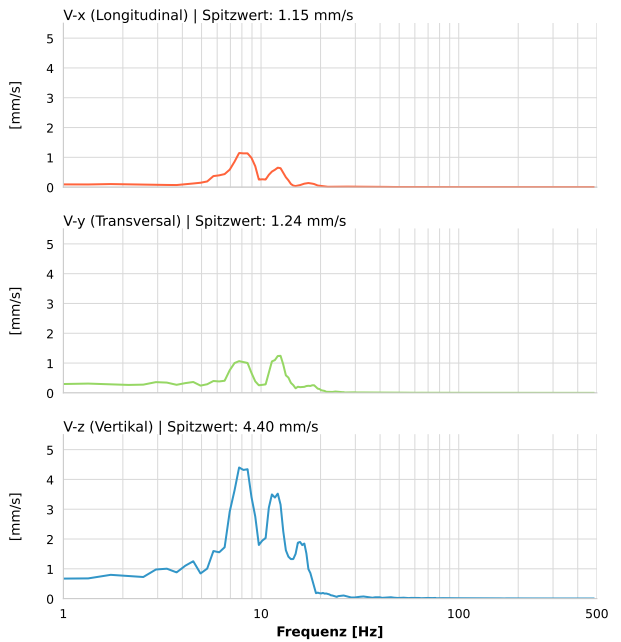
| | |
|------------------|---------------------------|
| Datum: | 22.05.2026 |
| Zeit: | 11:32:48 |
| Event-ID: | 2495-WG14-22052026-113248 |
| Kalibrier Datum: | 12.07.2025 |

Spitzwerte

| V-x (Longitudinal) | V-y (Transversal) | V-z (Vertikal) |
|--------------------|-------------------|------------------|
| 1.15 mm/s | 1.24 mm/s | 4.40 mm/s |
| 8.7 Hz | 11.8 Hz | 8.7 Hz |
| 22.90% von Limit | 22.86% von Limit | 88.03% von Limit |

V-n (Vektorsumme): 4.51 mm/s

SPEKTRALANALYSE - KOMPONENTEN FFT



| Kanal | Spitzwert | Spektrum 25% | Spektrum 50% | Spektrum 75% |
|-------|-----------|--------------|--------------|--------------|
| X | 1.15 mm/s | 7.7 Hz | 8.5 Hz | 12.6 Hz |
| Y | 1.24 mm/s | 7.3 Hz | 11.0 Hz | 13.0 Hz |
| Z | 4.40 mm/s | 7.7 Hz | 11.0 Hz | 15.0 Hz |

SPEKTRALANALYSE - FFT (DIN 4150-3)

