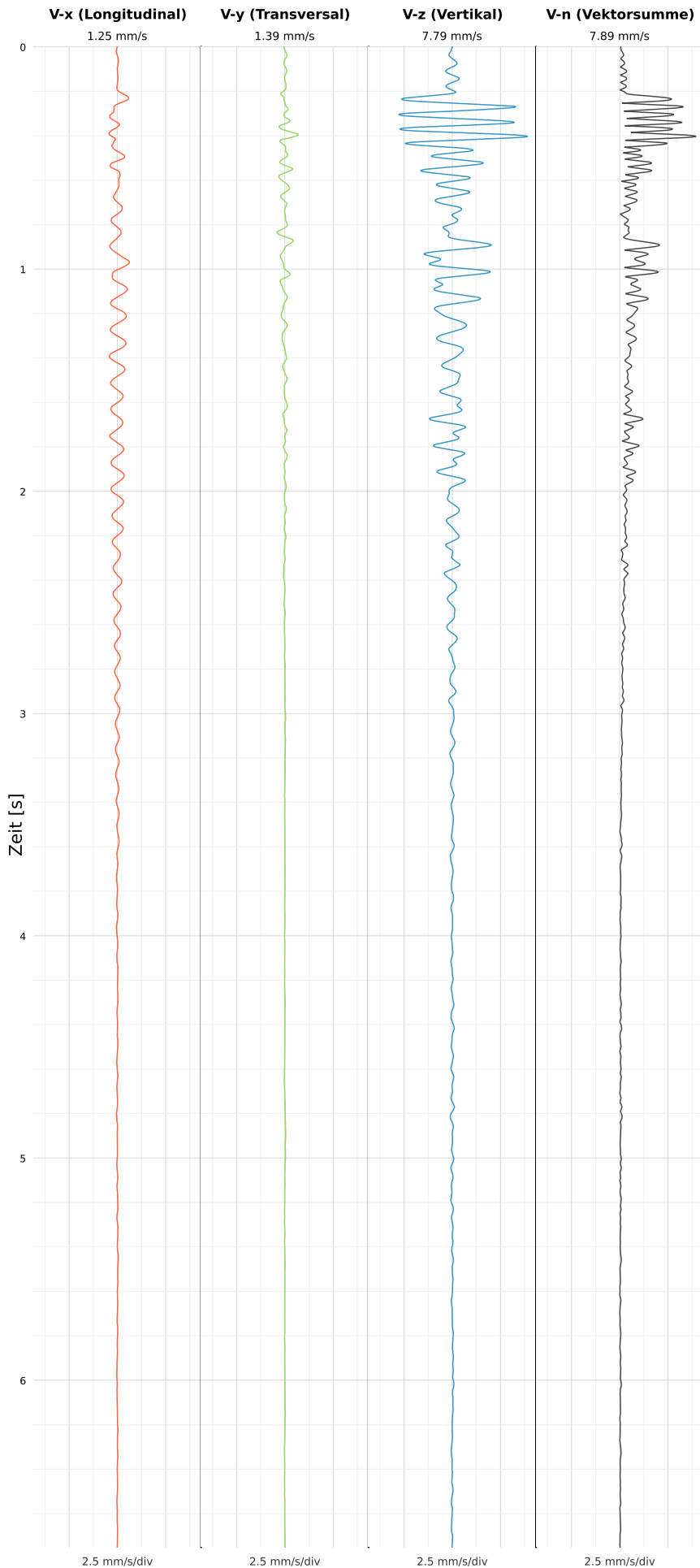


SCHWINGGESCHWINDIGKEIT



DATEI: 2495-WG14-22052026-111819_raw.csv

Aufzeichnungsdauer: 6.75 s | Abtastrate: 1000 Hz

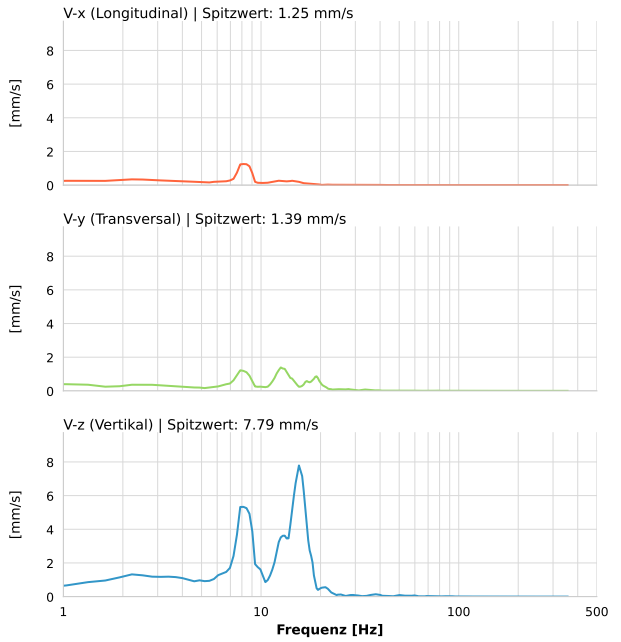
| | |
|------------------|---------------------------|
| Datum: | 22.05.2026 |
| Zeit: | 11:18:19 |
| Event-ID: | 2495-WG14-22052026-111819 |
| Kalibrier Datum: | 12.07.2025 |

Spitzwerte

| V-x (Longitudinal) | V-y (Transversal) | V-z (Vertikal) |
|--------------------|-------------------|-------------------|
| 1.25 mm/s | 1.39 mm/s | 7.79 mm/s |
| 8.4 Hz | 8.3 Hz | 8.4 Hz |
| 25.06% von Limit | 27.83% von Limit | 155.81% von Limit |

V-n (Vektorsumme): 7.89 mm/s

SPEKTRALANALYSE - KOMPONENTEN FFT



| Kanal | Spitzwert | Spektrum 25% | Spektrum 50% | Spektrum 75% |
|-------|-----------|--------------|--------------|--------------|
| X | 1.25 mm/s | 6.4 Hz | 8.4 Hz | 13.2 Hz |
| Y | 1.39 mm/s | 8.1 Hz | 13.2 Hz | 18.8 Hz |
| Z | 7.79 mm/s | 8.4 Hz | 14.4 Hz | 16.1 Hz |

SPEKTRALANALYSE - FFT (DIN 4150-3)

