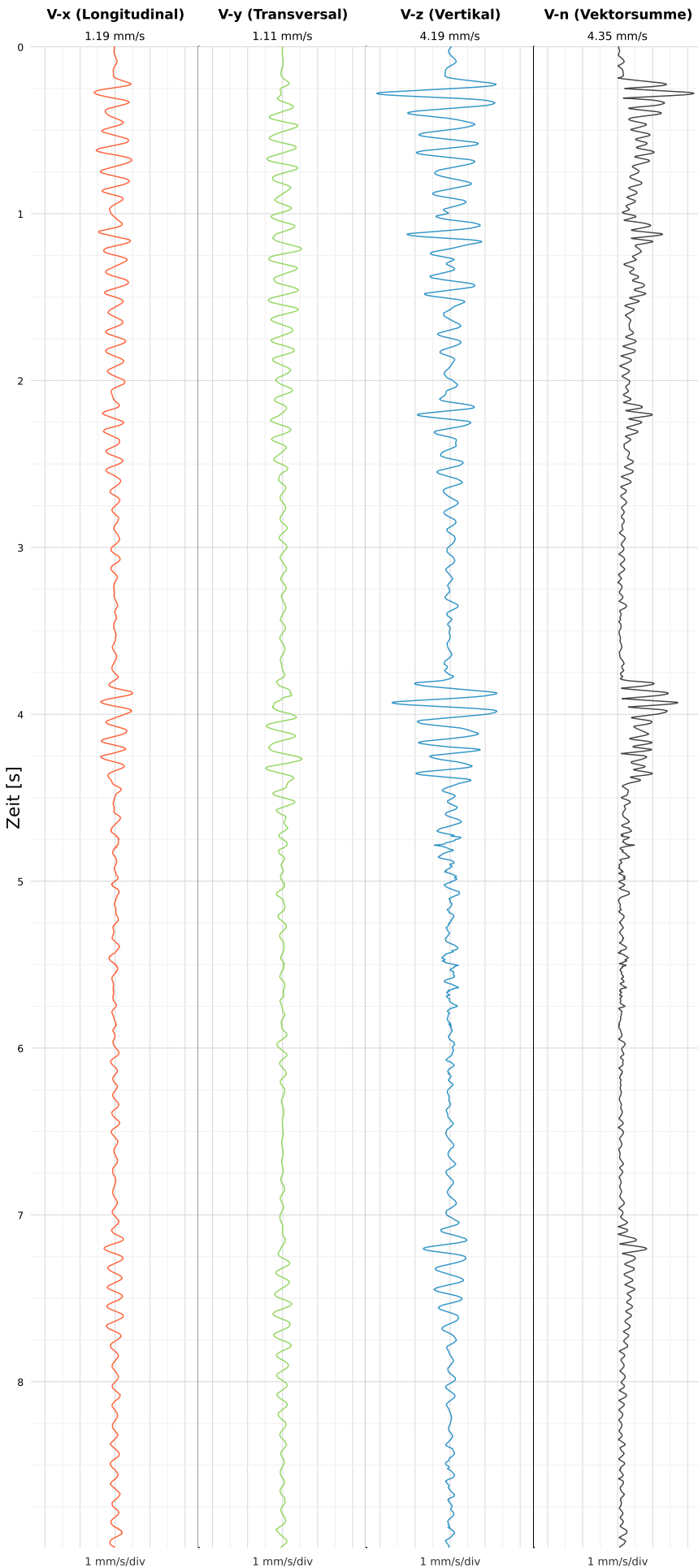


SCHWINGGESCHWINDIGKEIT



DATEI: 2495-WG14-22052026-102615_raw.csv

Aufzeichnungsdauer: 8.99 s | Abtastrate: 1000 Hz

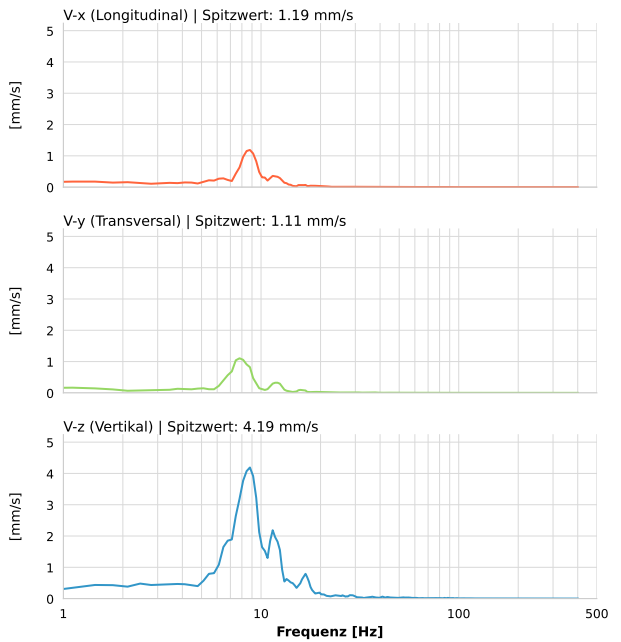
| | |
|------------------|---------------------------|
| Datum: | 22.05.2026 |
| Zeit: | 10:26:15 |
| Event-ID: | 2495-WG14-22052026-102615 |
| Kalibrier Datum: | 12.07.2025 |

Spitzwerte

| V-x (Longitudinal) | V-y (Transversal) | V-z (Vertikal) |
|--------------------|-------------------|------------------|
| 1.19 mm/s | 1.11 mm/s | 4.19 mm/s |
| 8.2 Hz | 8.2 Hz | 8.2 Hz |
| 23.77% von Limit | 22.10% von Limit | 83.82% von Limit |

V-n (Vektorsumme): 4.35 mm/s

SPEKTRALANALYSE - KOMPONENTEN FFT



| Kanal | Spitzwert | Spektrum 25% | Spektrum 50% | Spektrum 75% |
|-------|-----------|--------------|--------------|--------------|
| X | 1.19 mm/s | 8.1 Hz | 8.8 Hz | 11.8 Hz |
| Y | 1.11 mm/s | 7.1 Hz | 8.1 Hz | 11.8 Hz |
| Z | 4.19 mm/s | 8.1 Hz | 9.5 Hz | 13.1 Hz |

SPEKTRALANALYSE - FFT (DIN 4150-3)

