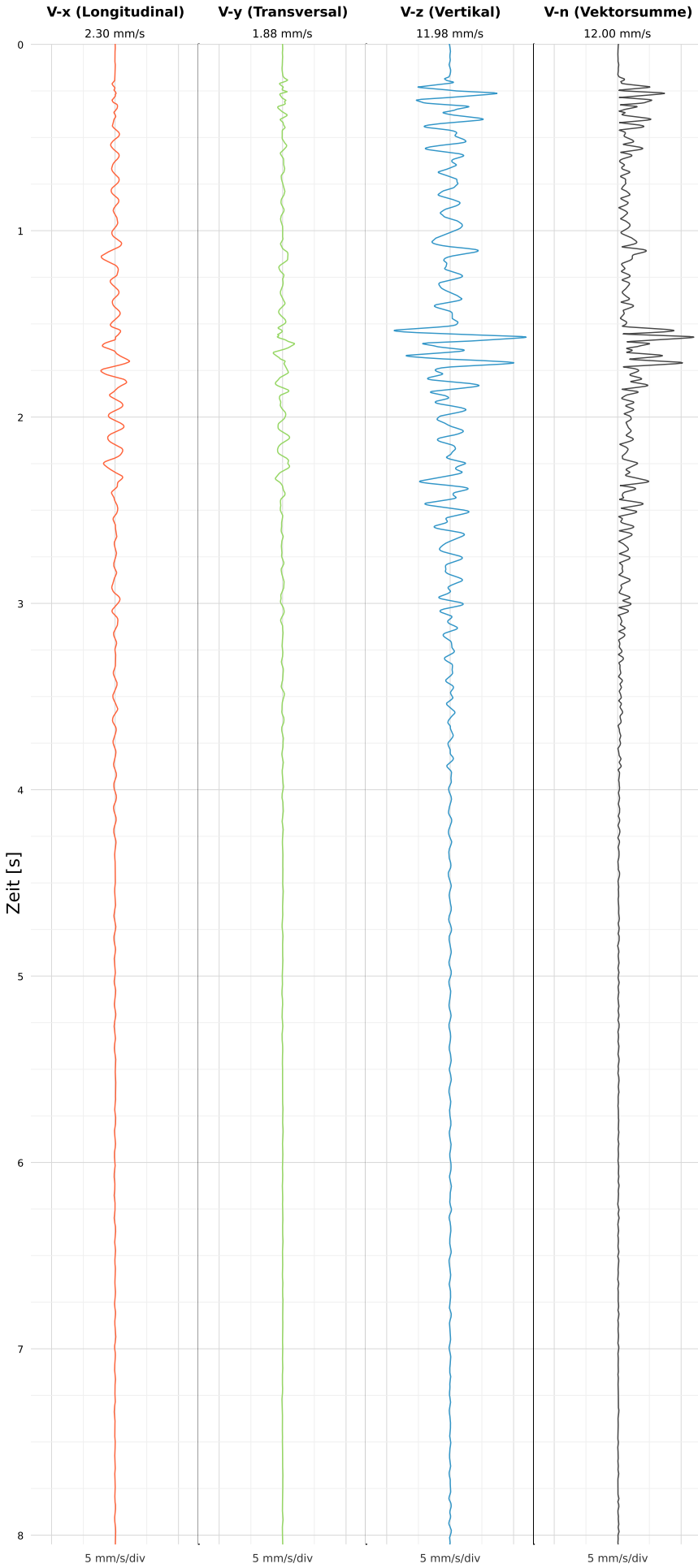


SCHWINGGESCHWINDIGKEIT



DATEI: 2495-WG14-22052026-082159\_raw.csv

Aufzeichnungsdauer: 8.05 s | Abtastrate: 1000 Hz

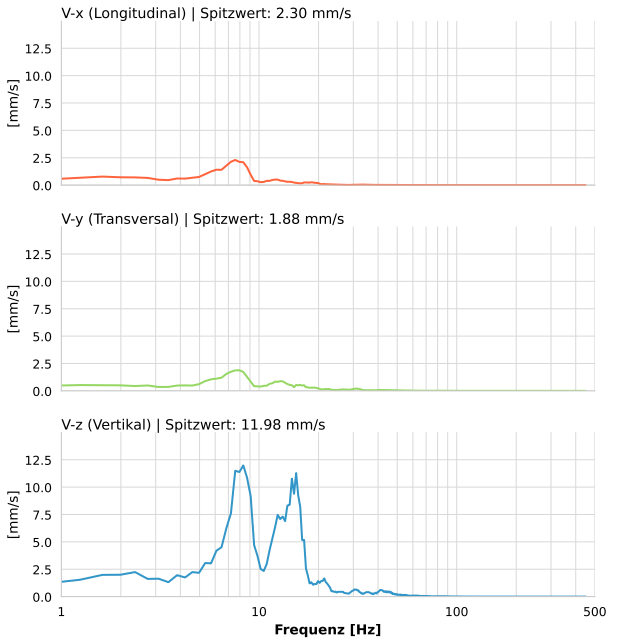
|                  |                           |
|------------------|---------------------------|
| Datum:           | 22.05.2026                |
| Zeit:            | 08:21:59                  |
| Event-ID:        | 2495-WG14-22052026-082159 |
| Kalibrier Datum: | 12.07.2025                |

Spitzwerte

| V-x (Longitudinal) | V-y (Transversal) | V-z (Vertikal)    |
|--------------------|-------------------|-------------------|
| 2.30 mm/s          | 1.88 mm/s         | 11.98 mm/s        |
| 8.1 Hz             | 8.1 Hz            | 8.4 Hz            |
| 45.93% von Limit   | 37.57% von Limit  | 239.53% von Limit |

V-n (Vektorsumme): 12.00 mm/s

SPEKTRALANALYSE - KOMPONENTEN FFT



| Kanal | Spitzwert  | Spektrum 25% | Spektrum 50% | Spektrum 75% |
|-------|------------|--------------|--------------|--------------|
| X     | 2.30 mm/s  | 5.7 Hz       | 8.0 Hz       | 12.1 Hz      |
| Y     | 1.88 mm/s  | 6.8 Hz       | 10.6 Hz      | 18.4 Hz      |
| Z     | 11.98 mm/s | 8.3 Hz       | 12.8 Hz      | 16.2 Hz      |

SPEKTRALANALYSE - FFT (DIN 4150-3)

