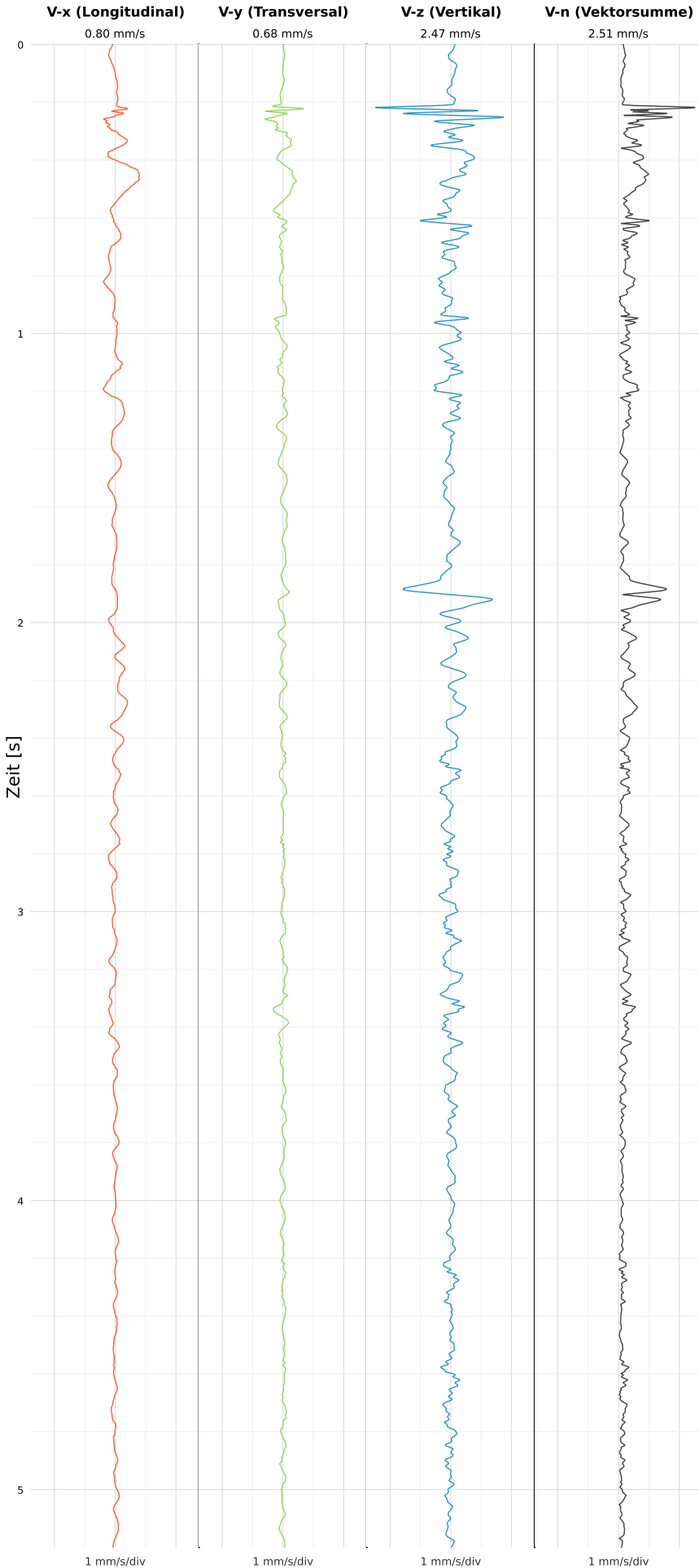


SCHWINGGESCHWINDIGKEIT



DATEI: 2495-WG14-22052026-011214_raw.csv

Aufzeichnungsdauer: 5.20 s | Abtastrate: 1000 Hz

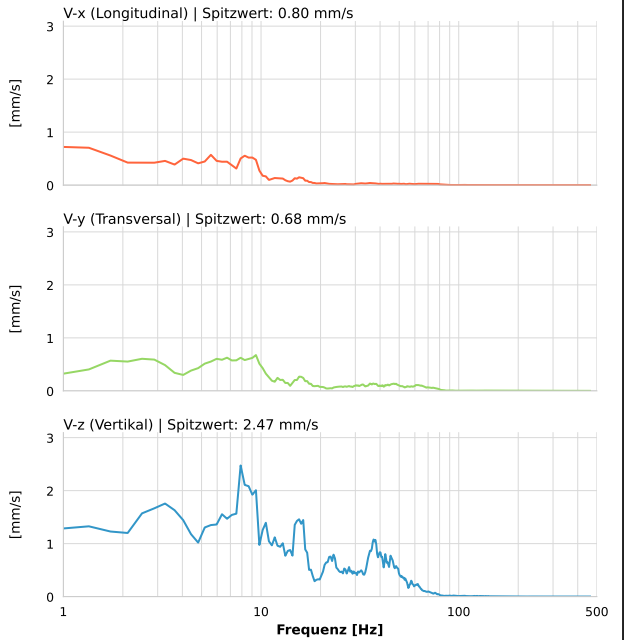
| | |
|------------------|---------------------------|
| Datum: | 22.05.2026 |
| Zeit: | 01:12:14 |
| Event-ID: | 2495-WG14-22052026-011214 |
| Kalibrier Datum: | 12.07.2025 |

Spitzwerte

| V-x (Longitudinal) | V-y (Transversal) | V-z (Vertikal) |
|--------------------|-------------------|------------------|
| 0.80 mm/s | 0.68 mm/s | 2.47 mm/s |
| 0.6 Hz | 8.5 Hz | 8.5 Hz |
| 15.96% von Limit | 13.51% von Limit | 49.49% von Limit |

V-n (Vektorsumme): 2.51 mm/s

SPEKTRALANALYSE - KOMPONENTEN FFT



| Kanal | Spitzwert | Spektrum 25% | Spektrum 50% | Spektrum 75% |
|-------|-----------|--------------|--------------|--------------|
| X | 0.80 mm/s | 3.3 Hz | 7.5 Hz | 16.0 Hz |
| Y | 0.68 mm/s | 6.7 Hz | 15.6 Hz | 47.1 Hz |
| Z | 2.47 mm/s | 8.7 Hz | 21.0 Hz | 40.6 Hz |

SPEKTRALANALYSE - FFT (DIN 4150-3)

