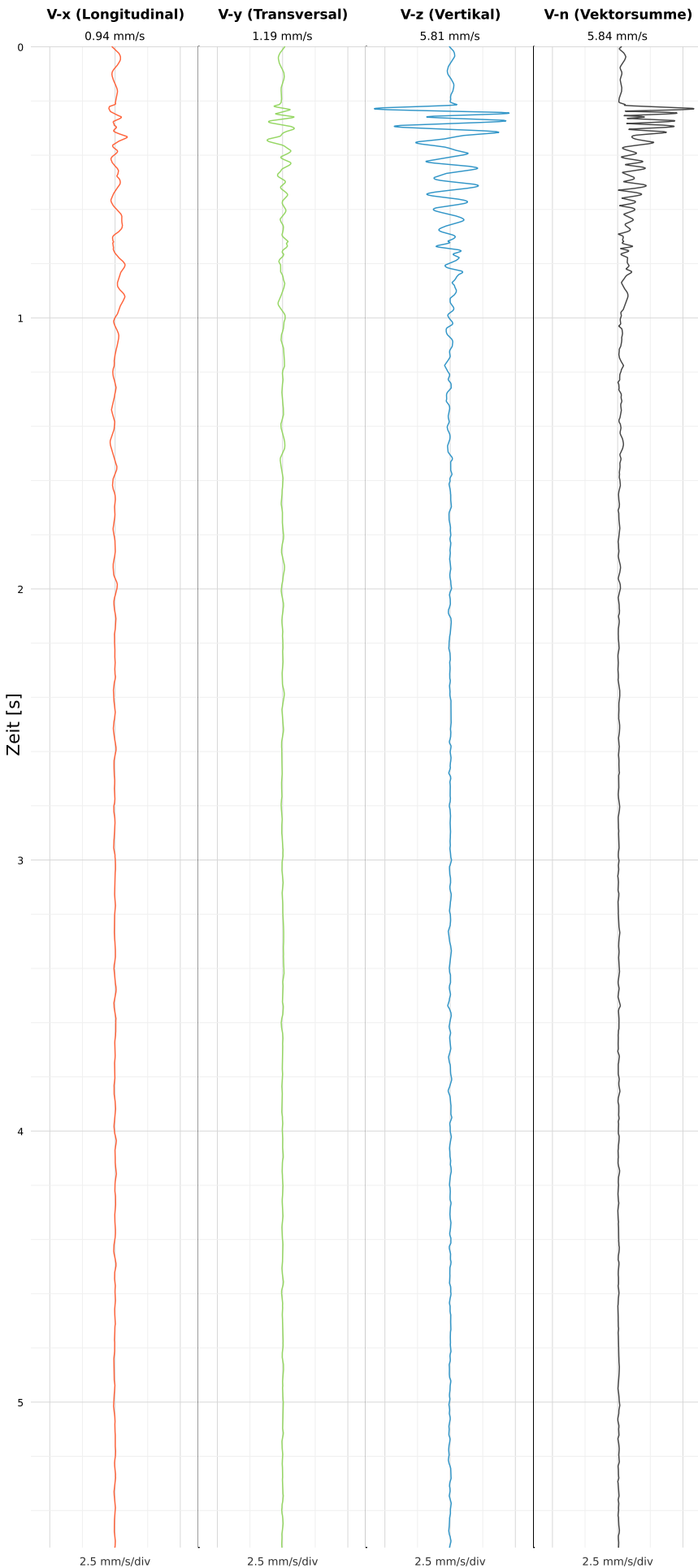


SCHWINGGESCHWINDIGKEIT



DATEI: 2495-WG14-22052026-010949_raw.csv

Aufzeichnungsdauer: 5.54 s | Abtastrate: 1000 Hz

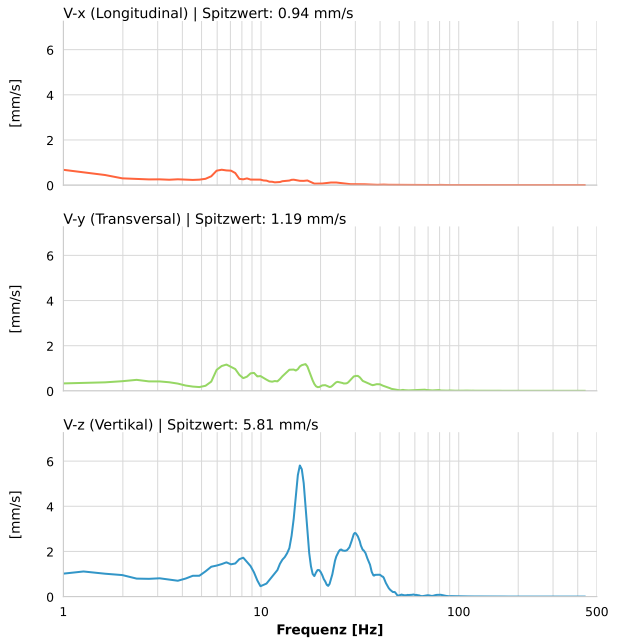
| | |
|------------------|---------------------------|
| Datum: | 22.05.2026 |
| Zeit: | 01:09:49 |
| Event-ID: | 2495-WG14-22052026-010949 |
| Kalibrier Datum: | 12.07.2025 |

Spitzwerte

| V-x (Longitudinal) | V-y (Transversal) | V-z (Vertikal) |
|--------------------|-------------------|------------------|
| 0.94 mm/s | 1.19 mm/s | 5.81 mm/s |
| 6.7 Hz | 6.7 Hz | 15.7 Hz |
| 18.81% von Limit | 23.71% von Limit | 90.34% von Limit |

V-n (Vektorsumme): 5.84 mm/s

SPEKTRALANALYSE - KOMPONENTEN FFT



| Kanal | Spitzwert | Spektrum 25% | Spektrum 50% | Spektrum 75% |
|-------|-----------|--------------|--------------|--------------|
| X | 0.94 mm/s | 4.2 Hz | 8.9 Hz | 20.8 Hz |
| Y | 1.19 mm/s | 11.0 Hz | 17.9 Hz | 33.1 Hz |
| Z | 5.81 mm/s | 15.0 Hz | 24.0 Hz | 32.0 Hz |

SPEKTRALANALYSE - FFT (DIN 4150-3)

