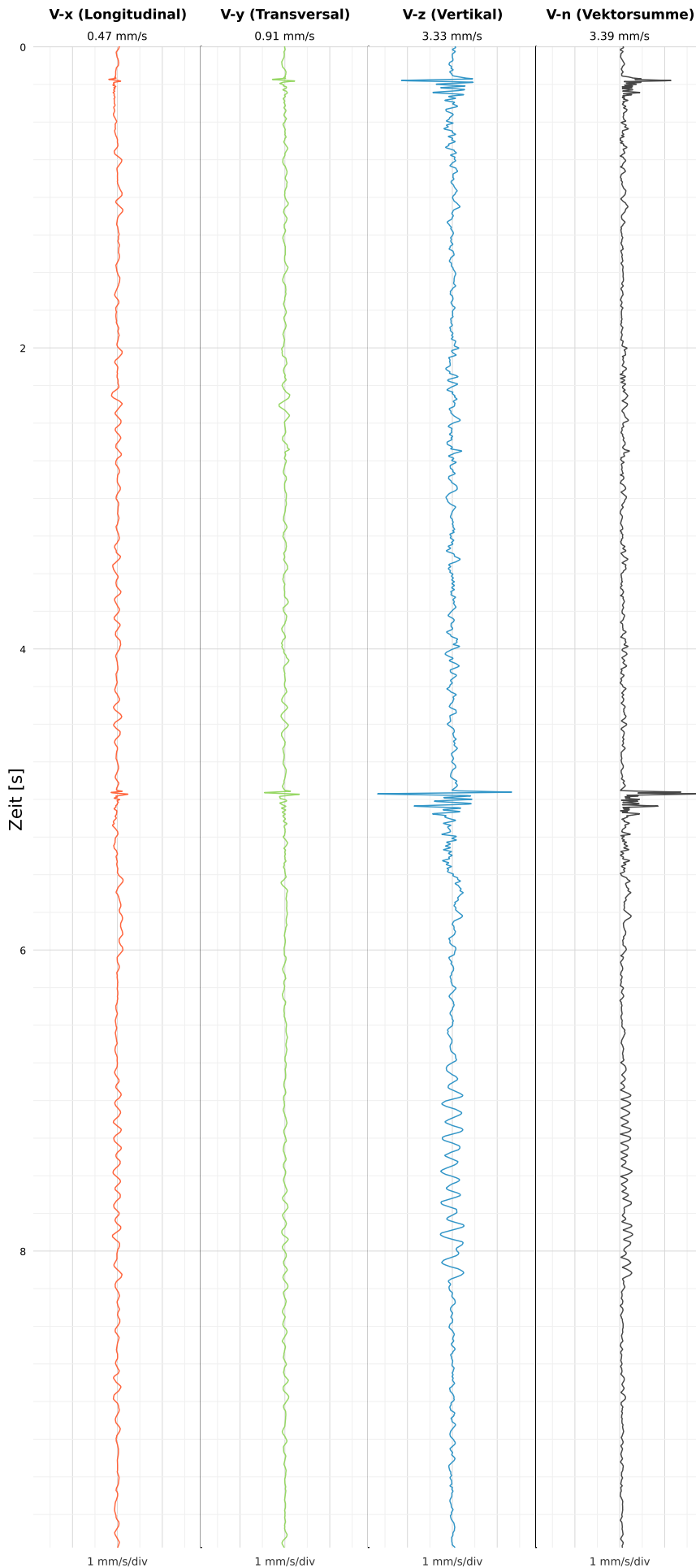


SCHWINGGESCHWINDIGKEIT



DATEI: 2495-WG14-22052026-005348\_raw.csv

Aufzeichnungsdauer: 9.97 s | Abtastrate: 1000 Hz

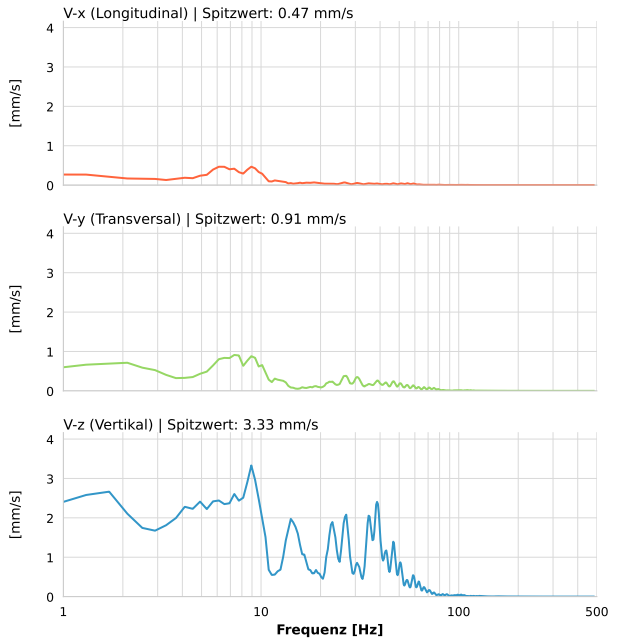
|                  |                           |
|------------------|---------------------------|
| Datum:           | 22.05.2026                |
| Zeit:            | 00:53:48                  |
| Event-ID:        | 2495-WG14-22052026-005348 |
| Kalibrier Datum: | 12.07.2025                |

Spitzwerte

| V-x (Longitudinal) | V-y (Transversal) | V-z (Vertikal)   |
|--------------------|-------------------|------------------|
| 0.47 mm/s          | 0.91 mm/s         | 3.33 mm/s        |
| 8.7 Hz             | 9.1 Hz            | 9.1 Hz           |
| 9.36% von Limit    | 18.23% von Limit  | 66.59% von Limit |

V-n (Vektorsumme): 3.39 mm/s

SPEKTRALANALYSE - KOMPONENTEN FFT



| Kanal | Spitzwert | Spektrum 25% | Spektrum 50% | Spektrum 75% |
|-------|-----------|--------------|--------------|--------------|
| X     | 0.47 mm/s | 6.5 Hz       | 9.3 Hz       | 32.6 Hz      |
| Y     | 0.91 mm/s | 7.3 Hz       | 23.0 Hz      | 43.0 Hz      |
| Z     | 3.33 mm/s | 8.9 Hz       | 24.6 Hz      | 39.4 Hz      |

SPEKTRALANALYSE - FFT (DIN 4150-3)

