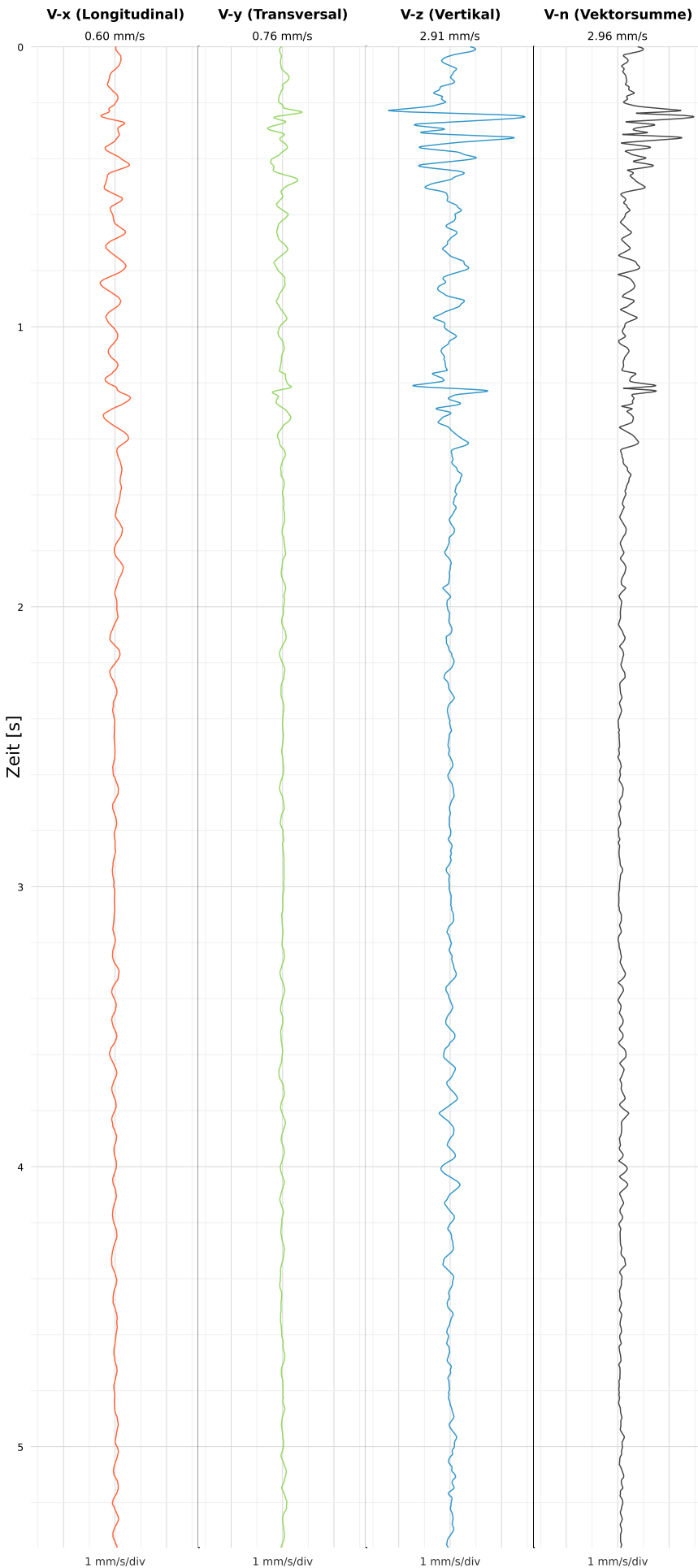


SCHWINGGESCHWINDIGKEIT



DATEI: 2495-WG14-22052026-005207_raw.csv

Aufzeichnungsdauer: 5.36 s | Abtastrate: 1000 Hz

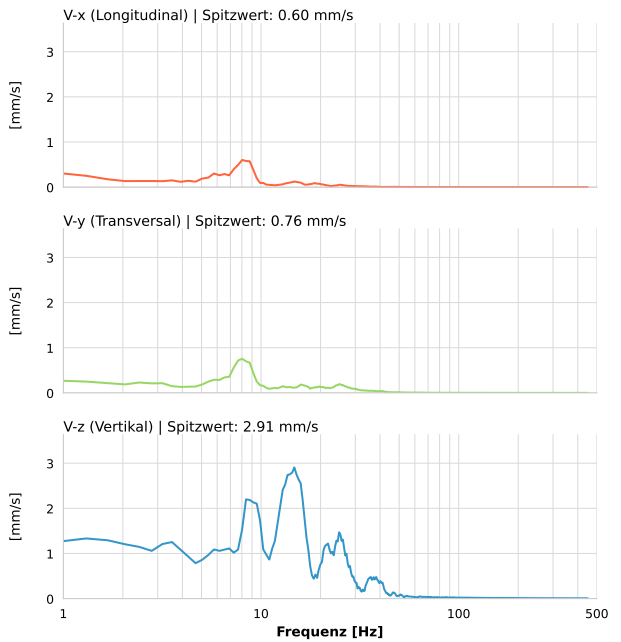
| | |
|------------------|---------------------------|
| Datum: | 22.05.2026 |
| Zeit: | 00:52:07 |
| Event-ID: | 2495-WG14-22052026-005207 |
| Kalibrier Datum: | 12.07.2025 |

Spitzwerte

| V-x (Longitudinal) | V-y (Transversal) | V-z (Vertikal) |
|--------------------|-------------------|------------------|
| 0.60 mm/s | 0.76 mm/s | 2.91 mm/s |
| 8.0 Hz | 8.0 Hz | 9.1 Hz |
| 12.03% von Limit | 15.10% von Limit | 58.11% von Limit |

V-n (Vektorsumme): 2.96 mm/s

SPEKTRALANALYSE - KOMPONENTEN FFT



| Kanal | Spitzwert | Spektrum 25% | Spektrum 50% | Spektrum 75% |
|-------|-----------|--------------|--------------|--------------|
| X | 0.60 mm/s | 5.8 Hz | 8.4 Hz | 15.5 Hz |
| Y | 0.76 mm/s | 7.3 Hz | 11.8 Hz | 24.8 Hz |
| Z | 2.91 mm/s | 9.5 Hz | 15.5 Hz | 26.7 Hz |

SPEKTRALANALYSE - FFT (DIN 4150-3)

