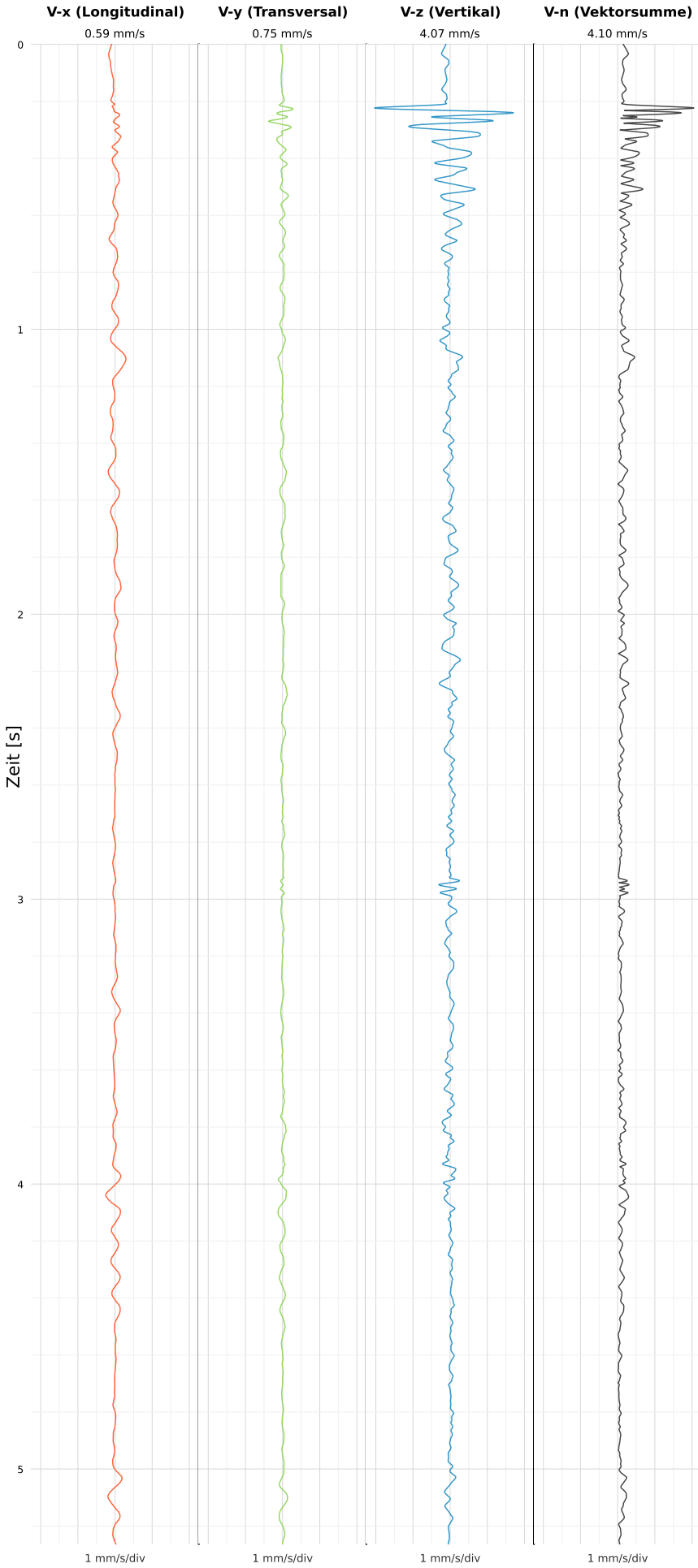


SCHWINGGESCHWINDIGKEIT



DATEI: 2495-WG14-22052026-001850_raw.csv

Aufzeichnungsdauer: 5.26 s | Abtastrate: 1000 Hz

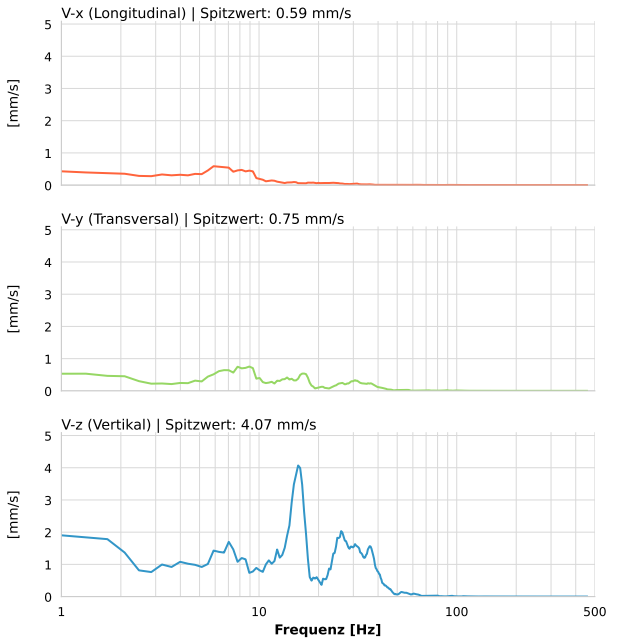
| | |
|------------------|---------------------------|
| Datum: | 22.05.2026 |
| Zeit: | 00:18:50 |
| Event-ID: | 2495-WG14-22052026-001850 |
| Kalibrier Datum: | 12.07.2025 |

Spitzwerte

| V-x (Longitudinal) | V-y (Transversal) | V-z (Vertikal) |
|--------------------|-------------------|------------------|
| 0.59 mm/s | 0.75 mm/s | 4.07 mm/s |
| 8.4 Hz | 8.5 Hz | 16.0 Hz |
| 11.74% von Limit | 15.09% von Limit | 62.73% von Limit |

V-n (Vektorsumme): 4.10 mm/s

SPEKTRALANALYSE - KOMPONENTEN FFT



| Kanal | Spitzwert | Spektrum 25% | Spektrum 50% | Spektrum 75% |
|-------|-----------|--------------|--------------|--------------|
| X | 0.59 mm/s | 4.7 Hz | 8.5 Hz | 20.3 Hz |
| Y | 0.75 mm/s | 8.2 Hz | 16.5 Hz | 31.7 Hz |
| Z | 4.07 mm/s | 13.1 Hz | 22.2 Hz | 32.1 Hz |

SPEKTRALANALYSE - FFT (DIN 4150-3)

