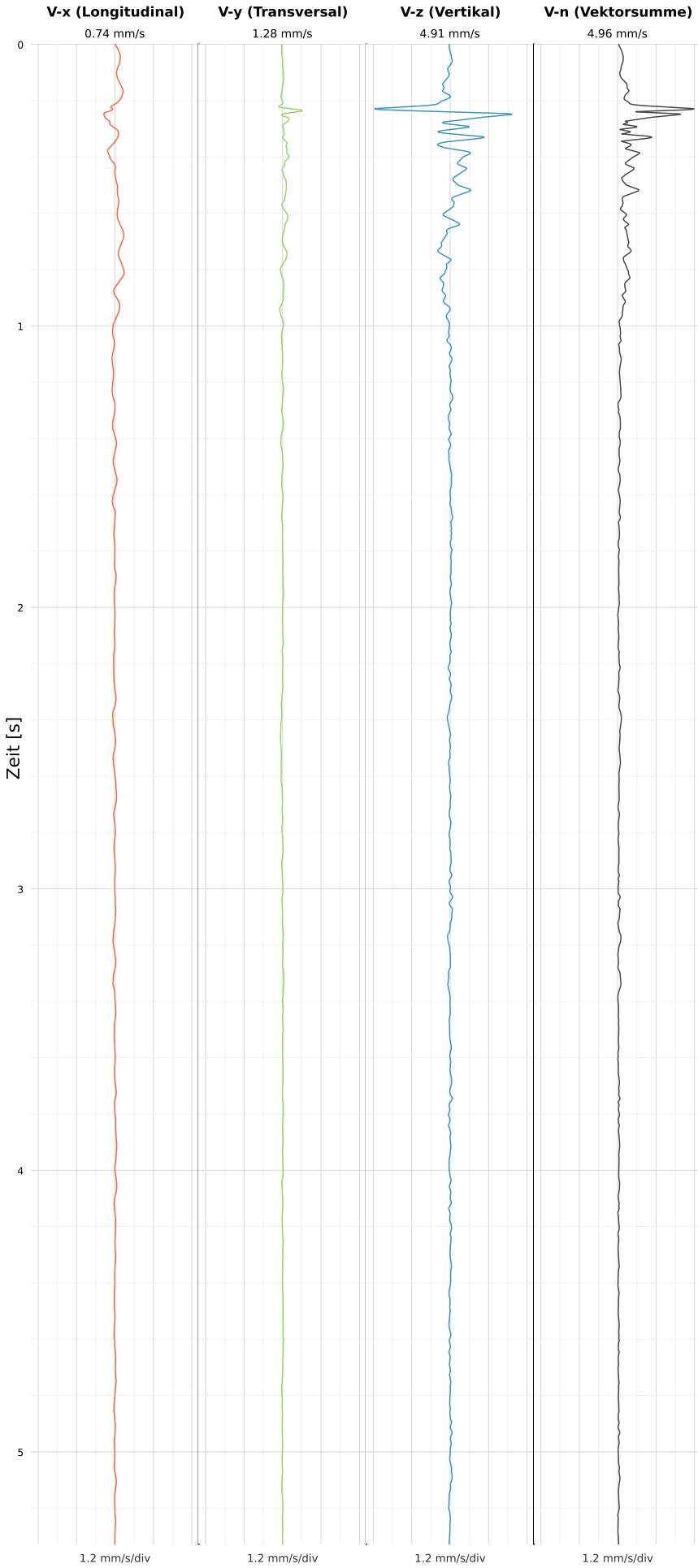


SCHWINGGESCHWINDIGKEIT



DATEI: 2495-WG14-21052026-233401_raw.csv

Aufzeichnungsdauer: 5.33 s | Abtastrate: 1000 Hz

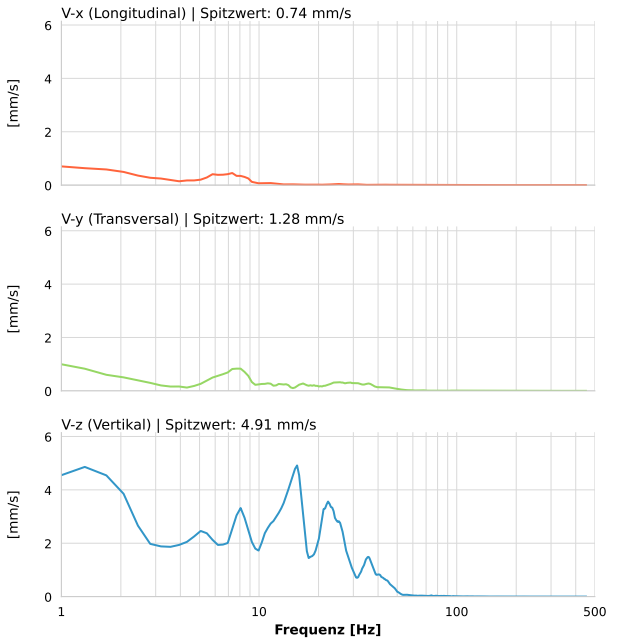
| | |
|------------------|---------------------------|
| Datum: | 21.05.2026 |
| Zeit: | 23:34:01 |
| Event-ID: | 2495-WG14-21052026-233401 |
| Kalibrier Datum: | 12.07.2025 |

Spitzwerte

| V-x (Longitudinal) | V-y (Transversal) | V-z (Vertikal) |
|--------------------|-------------------|------------------|
| 0.74 mm/s | 1.28 mm/s | 4.91 mm/s |
| 1.5 Hz | 0.8 Hz | 1.3 Hz |
| 14.81% von Limit | 25.57% von Limit | 98.29% von Limit |

V-n (Vektorsumme): 4.96 mm/s

SPEKTRALANALYSE - KOMPONENTEN FFT



| Kanal | Spitzwert | Spektrum 25% | Spektrum 50% | Spektrum 75% |
|-------|-----------|--------------|--------------|--------------|
| X | 0.74 mm/s | 1.7 Hz | 6.2 Hz | 9.9 Hz |
| Y | 1.28 mm/s | 7.3 Hz | 19.3 Hz | 33.2 Hz |
| Z | 4.91 mm/s | 8.8 Hz | 16.3 Hz | 26.1 Hz |

SPEKTRALANALYSE - FFT (DIN 4150-3)

