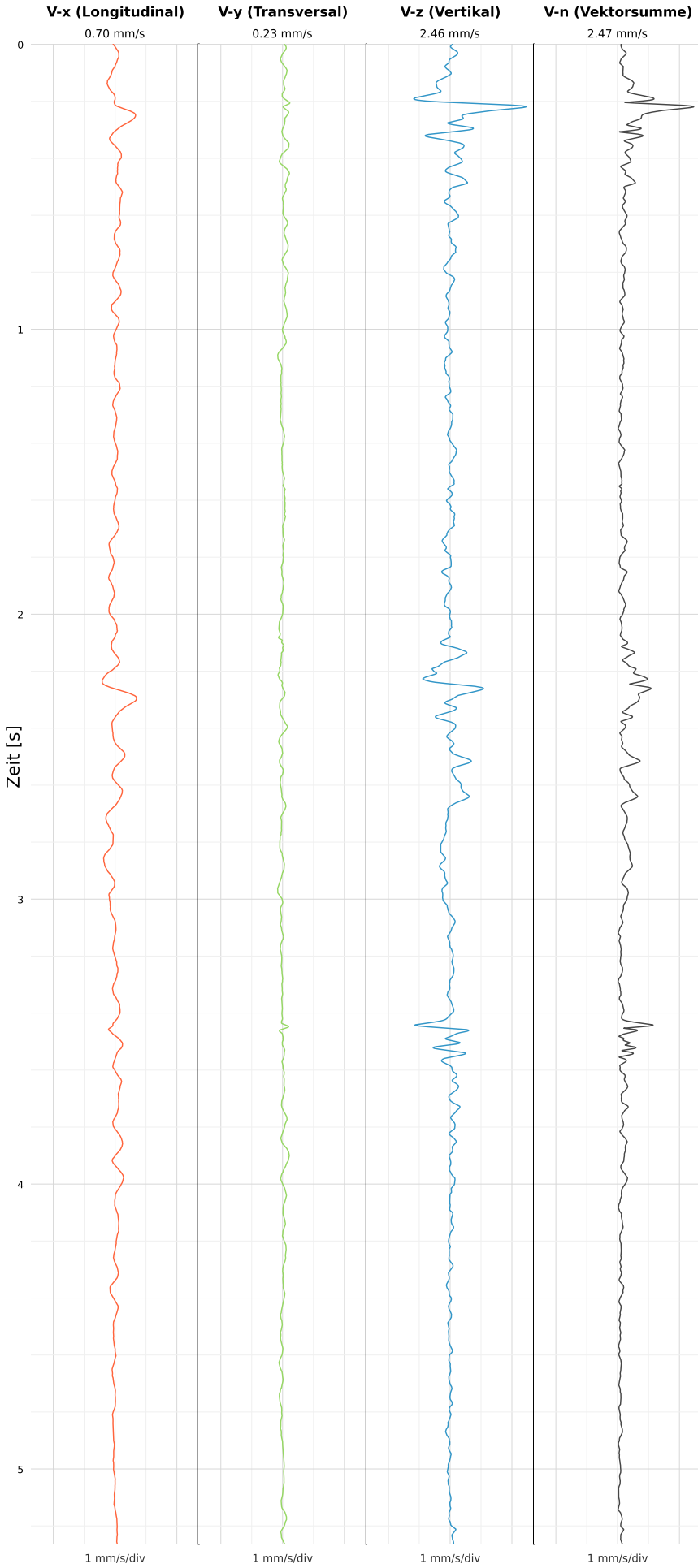


SCHWINGGESCHWINDIGKEIT



DATEI: 2495-WG14-21052026-230709\_raw.csv

Aufzeichnungsdauer: 5.26 s | Abtastrate: 1000 Hz

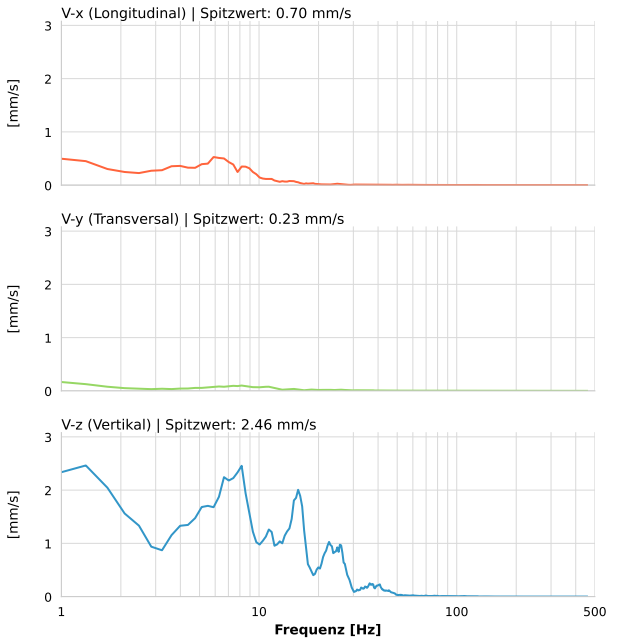
|                  |                           |
|------------------|---------------------------|
| Datum:           | 21.05.2026                |
| Zeit:            | 23:07:09                  |
| Event-ID:        | 2495-WG14-21052026-230709 |
| Kalibrier Datum: | 12.07.2025                |

Spitzwerte

| V-x (Longitudinal) | V-y (Transversal) | V-z (Vertikal)   |
|--------------------|-------------------|------------------|
| 0.70 mm/s          | 0.23 mm/s         | 2.46 mm/s        |
| 6.6 Hz             | 0.6 Hz            | 8.4 Hz           |
| 13.96% von Limit   | 4.69% von Limit   | 49.26% von Limit |

V-n (Vektorsumme): 2.47 mm/s

SPEKTRALANALYSE - KOMPONENTEN FFT



| Kanal | Spitzwert | Spektrum 25% | Spektrum 50% | Spektrum 75% |
|-------|-----------|--------------|--------------|--------------|
| X     | 0.70 mm/s | 3.2 Hz       | 6.3 Hz       | 10.8 Hz      |
| Y     | 0.23 mm/s | 4.0 Hz       | 9.7 Hz       | 23.0 Hz      |
| Z     | 2.46 mm/s | 5.9 Hz       | 12.0 Hz      | 21.8 Hz      |

SPEKTRALANALYSE - FFT (DIN 4150-3)

