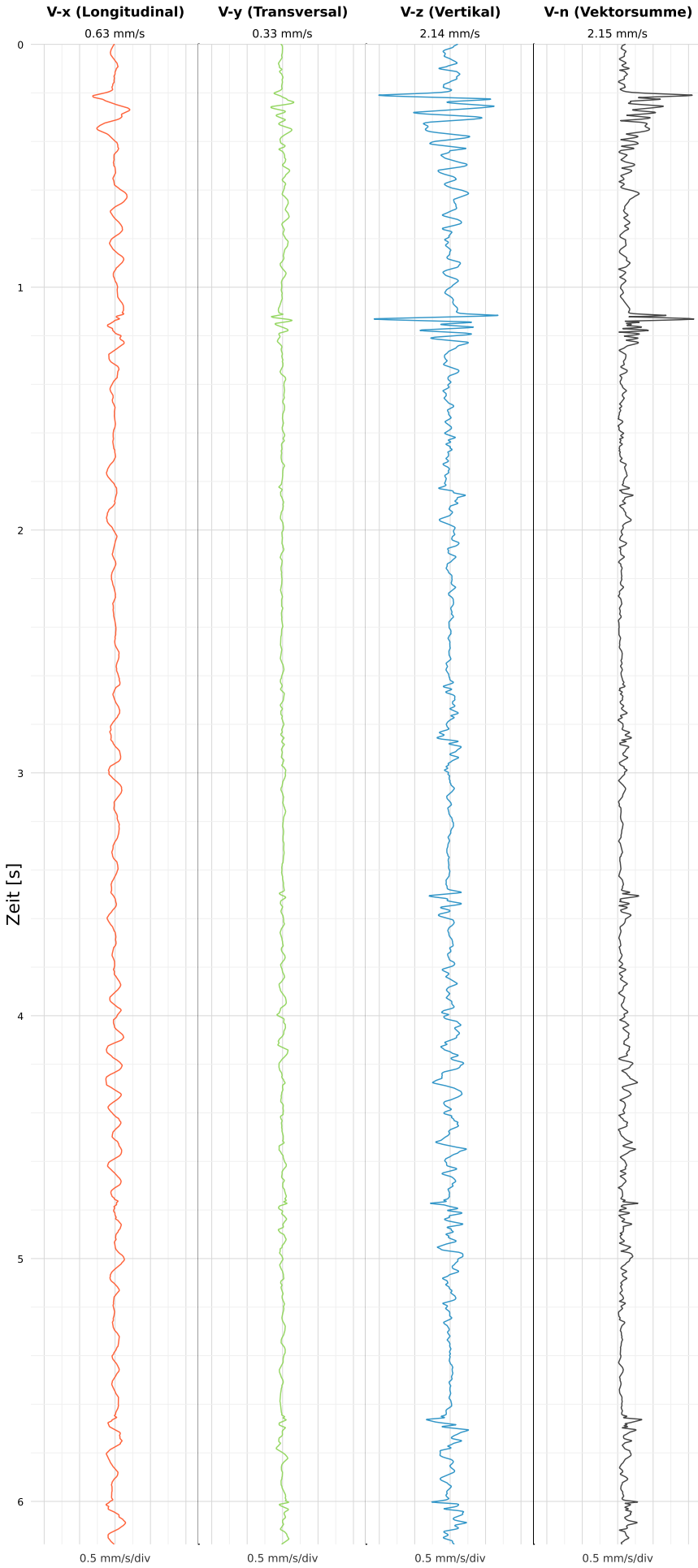


SCHWINGGESCHWINDIGKEIT



DATEI: 2495-WG14-21052026-221727\_raw.csv

Aufzeichnungsdauer: 6.18 s | Abtastrate: 1000 Hz

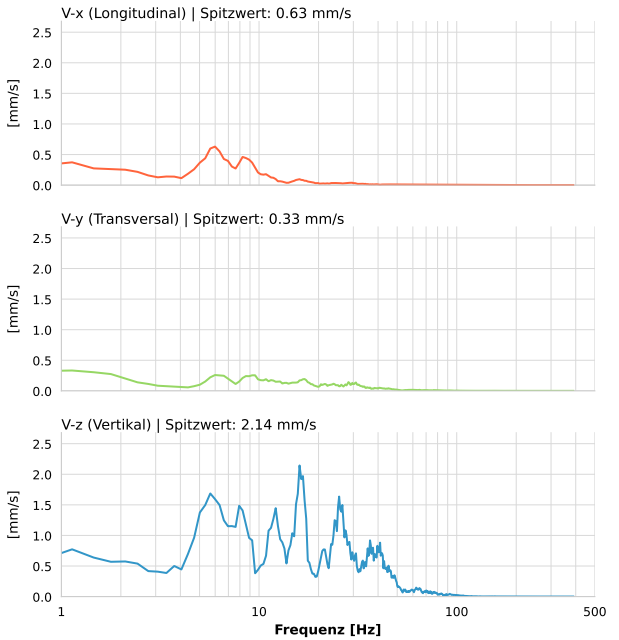
|                  |                           |
|------------------|---------------------------|
| Datum:           | 21.05.2026                |
| Zeit:            | 22:17:27                  |
| Event-ID:        | 2495-WG14-21052026-221727 |
| Kalibrier Datum: | 12.07.2025                |

Spitzwerte

| V-x (Longitudinal) | V-y (Transversal) | V-z (Vertikal)   |
|--------------------|-------------------|------------------|
| 0.63 mm/s          | 0.33 mm/s         | 2.14 mm/s        |
| 8.4 Hz             | 1.3 Hz            | 16.7 Hz          |
| 12.60% von Limit   | 6.66% von Limit   | 32.15% von Limit |

V-n (Vektorsumme): 2.15 mm/s

SPEKTRALANALYSE - KOMPONENTEN FFT



| Kanal | Spitzwert | Spektrum 25% | Spektrum 50% | Spektrum 75% |
|-------|-----------|--------------|--------------|--------------|
| X     | 0.63 mm/s | 5.3 Hz       | 7.9 Hz       | 15.4 Hz      |
| Y     | 0.33 mm/s | 8.6 Hz       | 17.0 Hz      | 31.6 Hz      |
| Z     | 2.14 mm/s | 11.8 Hz      | 23.8 Hz      | 37.1 Hz      |

SPEKTRALANALYSE - FFT (DIN 4150-3)

