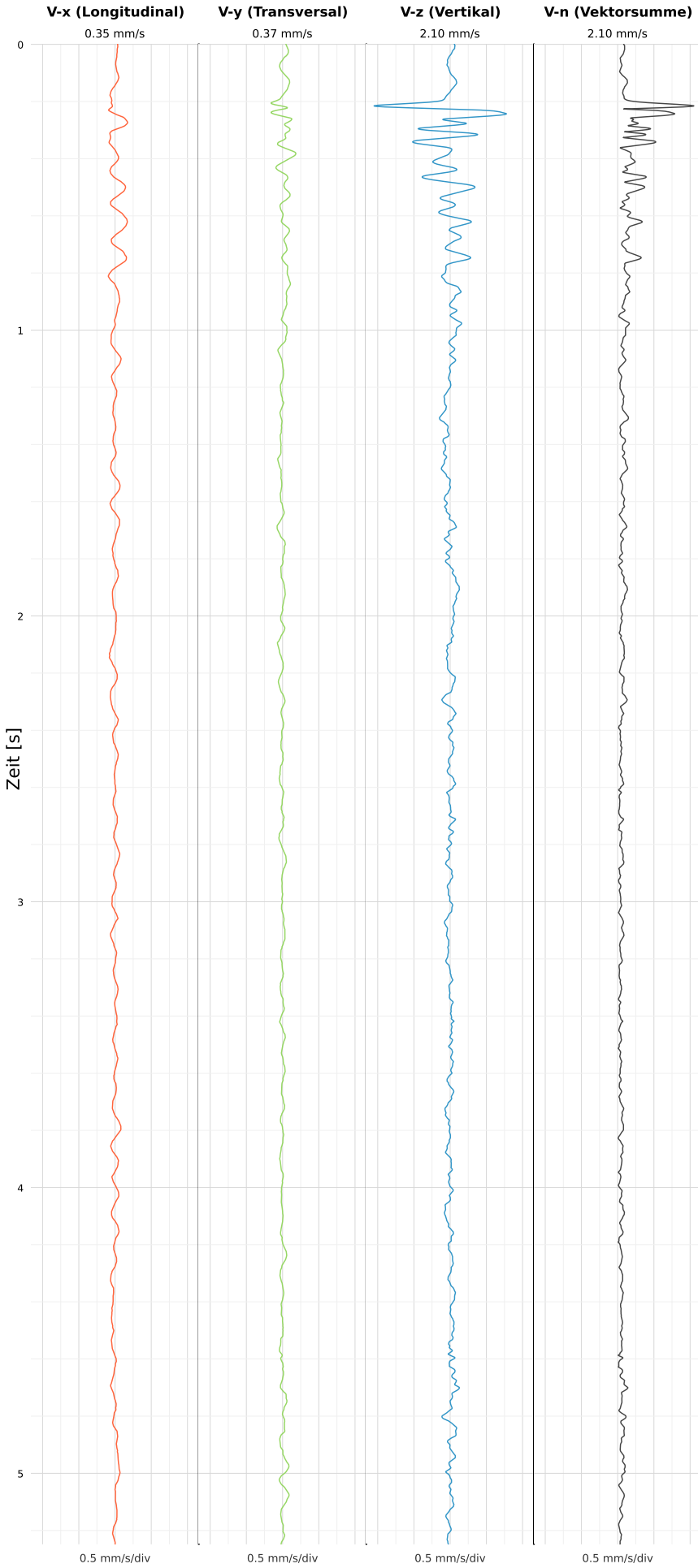


SCHWINGGESCHWINDIGKEIT



DATEI: 2495-WG14-21052026-220425_raw.csv

Aufzeichnungsdauer: 5.25 s | Abtastrate: 1000 Hz

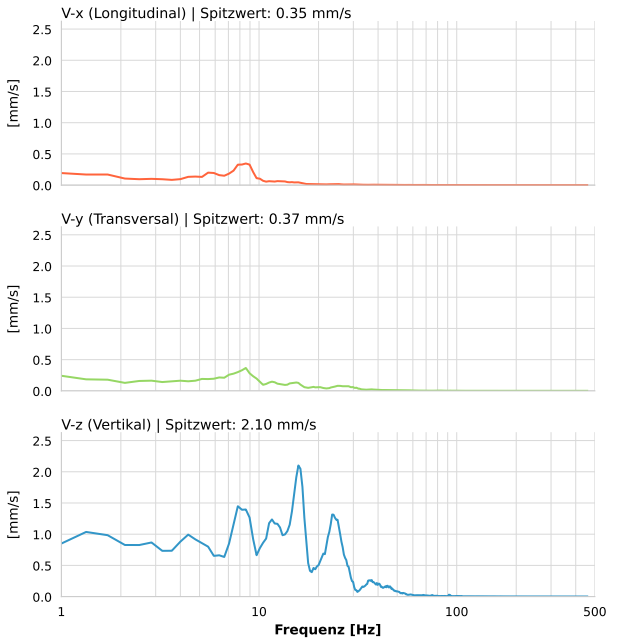
| | |
|------------------|---------------------------|
| Datum: | 21.05.2026 |
| Zeit: | 22:04:25 |
| Event-ID: | 2495-WG14-21052026-220425 |
| Kalibrier Datum: | 12.07.2025 |

Spitzwerte

| V-x (Longitudinal) | V-y (Transversal) | V-z (Vertikal) |
|--------------------|-------------------|------------------|
| 0.35 mm/s | 0.37 mm/s | 2.10 mm/s |
| 8.2 Hz | 0.2 Hz | 0.8 Hz |
| 6.93% von Limit | 7.34% von Limit | 42.02% von Limit |

V-n (Vektorsumme): 2.10 mm/s

SPEKTRALANALYSE - KOMPONENTEN FFT



| Kanal | Spitzwert | Spektrum 25% | Spektrum 50% | Spektrum 75% |
|-------|-----------|--------------|--------------|--------------|
| X | 0.35 mm/s | 5.1 Hz | 8.2 Hz | 13.1 Hz |
| Y | 0.37 mm/s | 5.9 Hz | 11.2 Hz | 25.7 Hz |
| Z | 2.10 mm/s | 8.6 Hz | 15.8 Hz | 25.0 Hz |

SPEKTRALANALYSE - FFT (DIN 4150-3)

