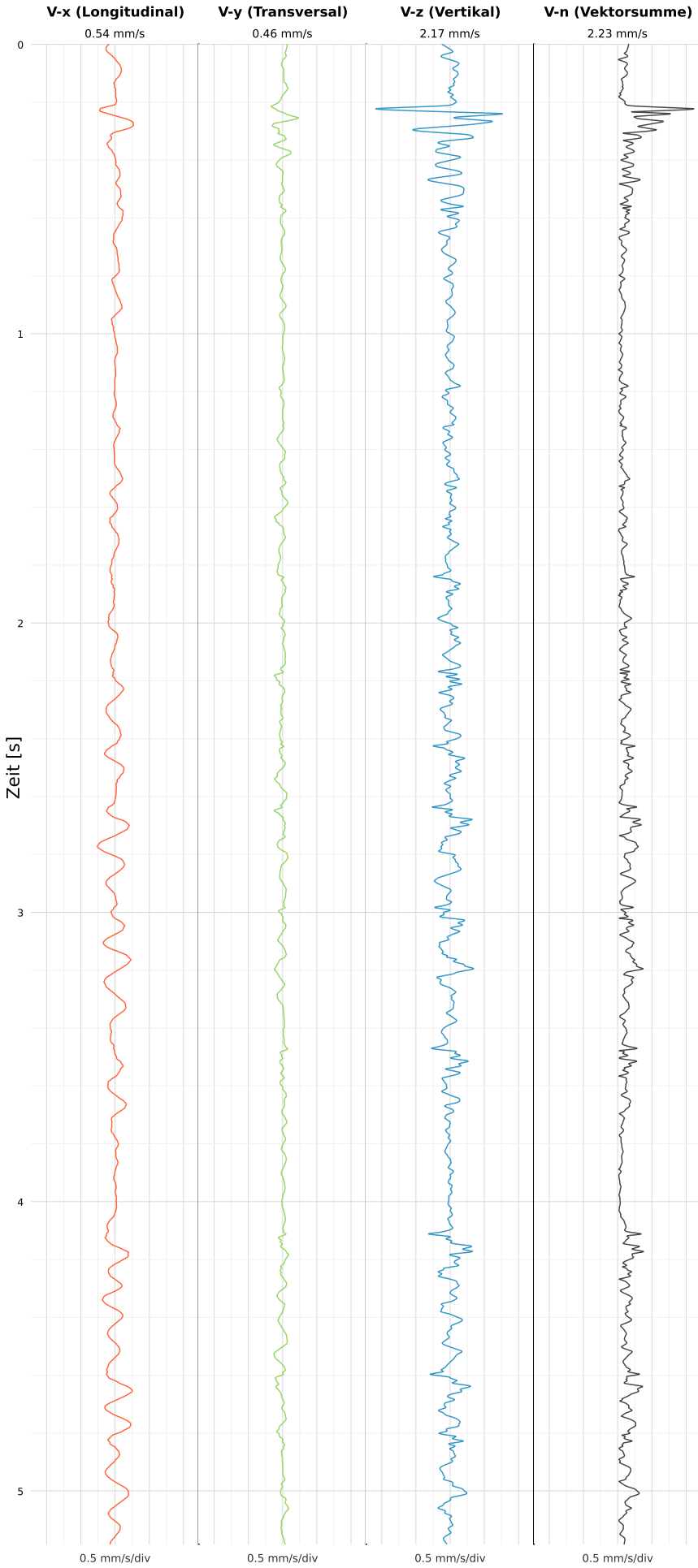


SCHWINGGESCHWINDIGKEIT



DATEI: 2495-WG14-21052026-215745\_raw.csv

Aufzeichnungsdauer: 5.18 s | Abtastrate: 1000 Hz

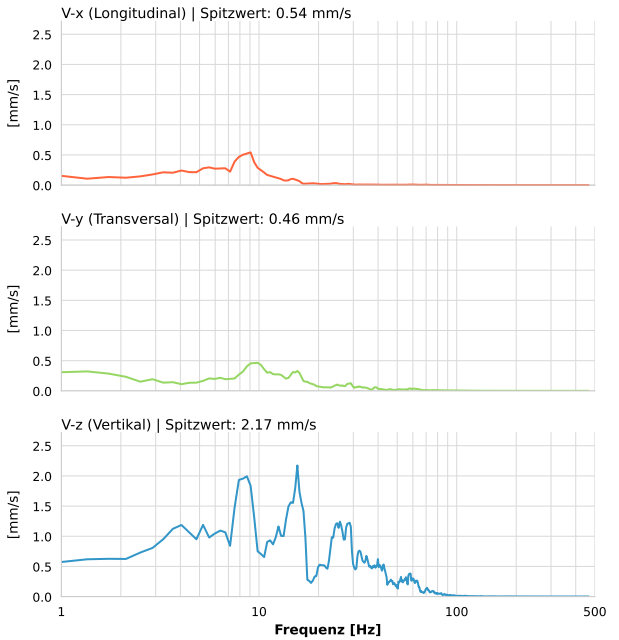
|                  |                           |
|------------------|---------------------------|
| Datum:           | 21.05.2026                |
| Zeit:            | 21:57:45                  |
| Event-ID:        | 2495-WG14-21052026-215745 |
| Kalibrier Datum: | 12.07.2025                |

Spitzwerte

| V-x (Longitudinal) | V-y (Transversal) | V-z (Vertikal)   |
|--------------------|-------------------|------------------|
| 0.54 mm/s          | 0.46 mm/s         | 2.17 mm/s        |
| 6.2 Hz             | 8.9 Hz            | 8.9 Hz           |
| 10.85% von Limit   | 9.29% von Limit   | 43.46% von Limit |

V-n (Vektorsumme): 2.23 mm/s

SPEKTRALANALYSE - KOMPONENTEN FFT



| Kanal | Spitzwert | Spektrum 25% | Spektrum 50% | Spektrum 75% |
|-------|-----------|--------------|--------------|--------------|
| X     | 0.54 mm/s | 5.6 Hz       | 8.7 Hz       | 12.5 Hz      |
| Y     | 0.46 mm/s | 8.7 Hz       | 14.1 Hz      | 29.1 Hz      |
| Z     | 2.17 mm/s | 11.0 Hz      | 23.7 Hz      | 37.6 Hz      |

SPEKTRALANALYSE - FFT (DIN 4150-3)

