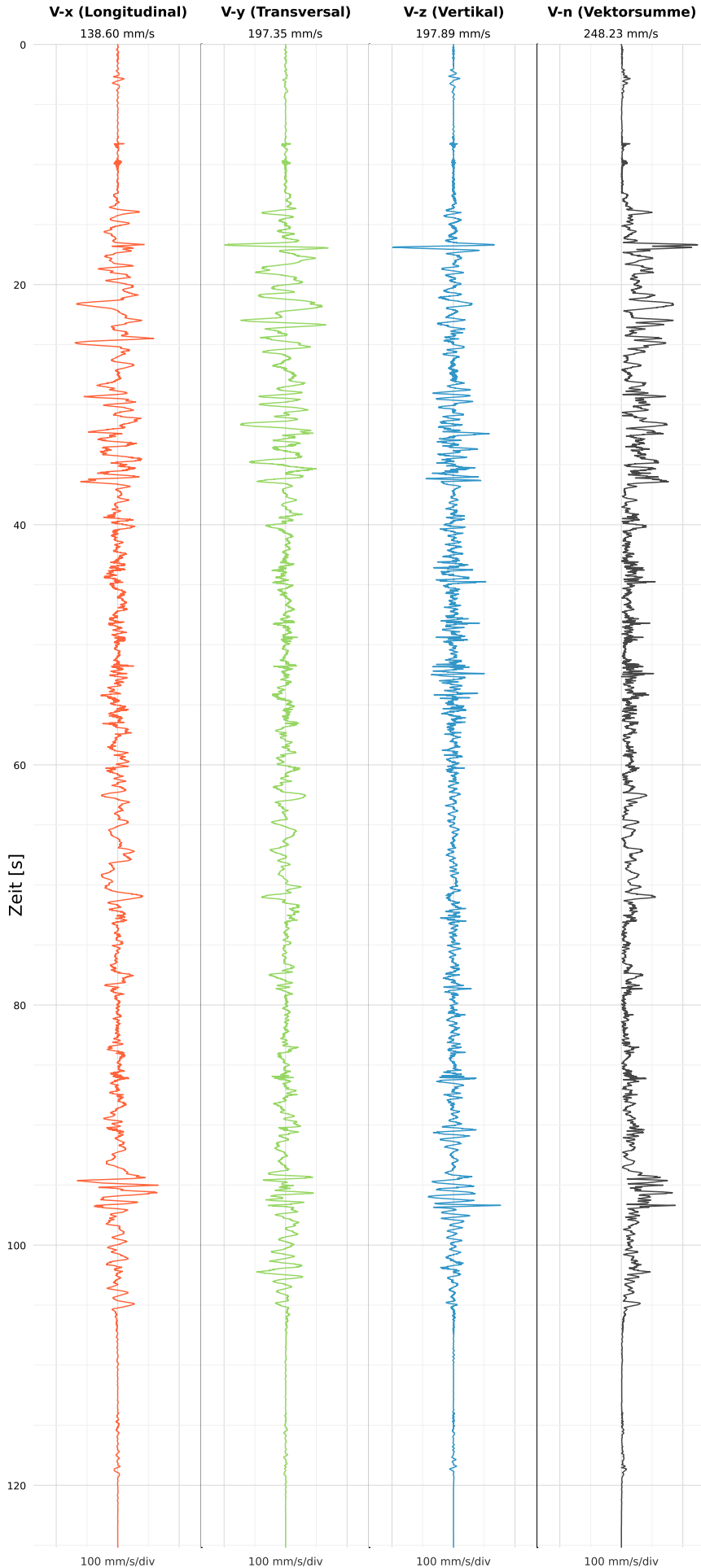


SCHWINGGESCHWINDIGKEIT



DATEI: 2494-HF49-30052026-125047_raw.csv

Aufzeichnungsdauer: 125.15 s | Abtastrate: 1000 Hz

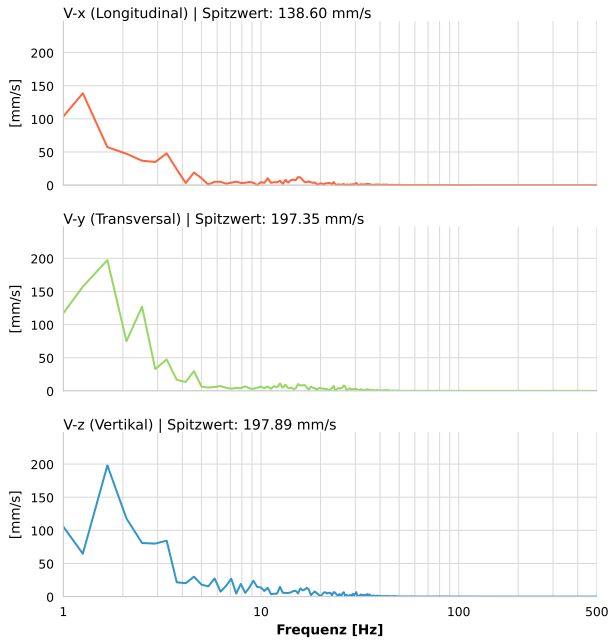
| | |
|------------------|---------------------------|
| Datum: | 30.05.2026 |
| Zeit: | 12:50:47 |
| Event-ID: | 2494-HF49-30052026-125047 |
| Kalibrier Datum: | 10.07.2025 |

Spitzwerte

| V-x (Longitudinal) | V-y (Transversal) | V-z (Vertikal) |
|--------------------|--------------------|--------------------|
| 138.60 mm/s | 197.35 mm/s | 197.89 mm/s |
| 0.3 Hz | 1.1 Hz | 2.0 Hz |
| 2771.98% von Limit | 3947.04% von Limit | 3957.79% von Limit |

V-n (Vektorsumme): 248.23 mm/s

SPEKTRALANALYSE - KOMPONENTEN FFT



| Kanal | Spitzwert | Spektrum 25% | Spektrum 50% | Spektrum 75% |
|-------|-------------|--------------|--------------|--------------|
| X | 138.60 mm/s | 1.3 Hz | 2.1 Hz | 8.7 Hz |
| Y | 197.35 mm/s | 1.3 Hz | 2.1 Hz | 6.2 Hz |
| Z | 197.89 mm/s | 1.7 Hz | 2.9 Hz | 9.6 Hz |

SPEKTRALANALYSE - FFT (DIN 4150-3)

