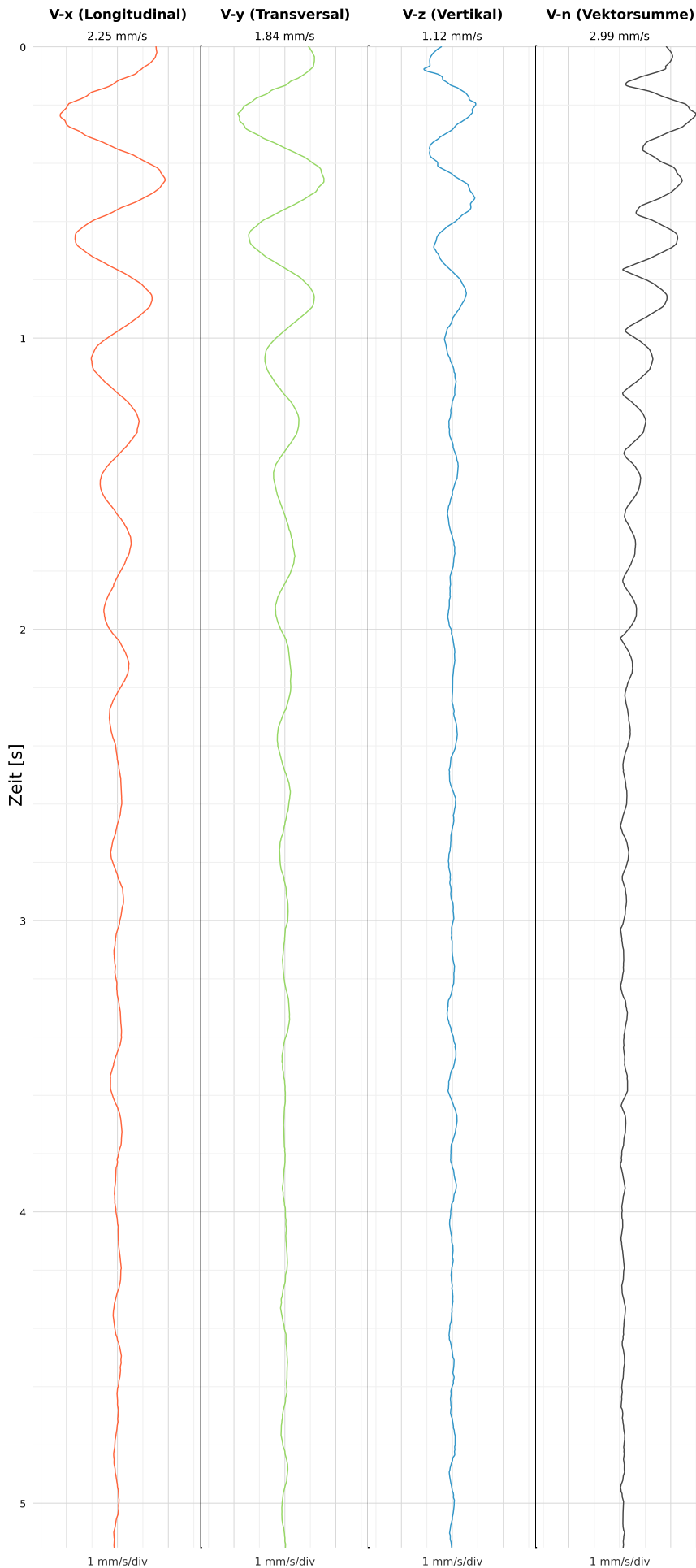


## SCHWINGGESCHWINDIGKEIT



DATEI: 2494-HF49-30052026-121145\_raw.csv

Aufzeichnungsdauer: 5.15 s | Abtastrate: 1000 Hz

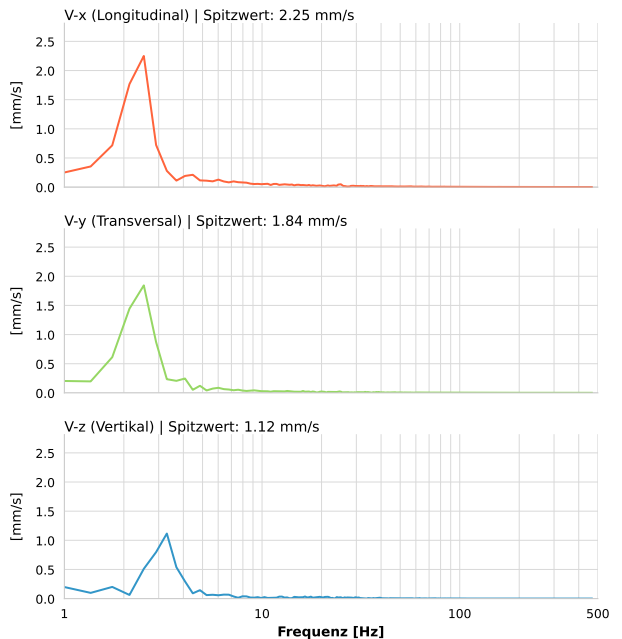
|                  |                           |
|------------------|---------------------------|
| Datum:           | 30.05.2026                |
| Zeit:            | 12:11:45                  |
| Event-ID:        | 2494-HF49-30052026-121145 |
| Kalibrier Datum: | 10.07.2025                |

### Spitzwerte

| V-x (Longitudinal) | V-y (Transversal) | V-z (Vertikal)   |
|--------------------|-------------------|------------------|
| 2.25 mm/s          | 1.84 mm/s         | 1.12 mm/s        |
| 2.3 Hz             | 2.3 Hz            | 3.3 Hz           |
| 44.99% von Limit   | 36.87% von Limit  | 22.32% von Limit |

V-n (Vektorsumme): 2.99 mm/s

## SPEKTRALANALYSE - KOMPONENTEN FFT



| Kanal | Spitzwert | Spektrum 25% | Spektrum 50% | Spektrum 75% |
|-------|-----------|--------------|--------------|--------------|
| X     | 2.25 mm/s | 2.5 Hz       | 4.5 Hz       | 45.6 Hz      |
| Y     | 1.84 mm/s | 2.1 Hz       | 2.9 Hz       | 25.0 Hz      |
| Z     | 1.12 mm/s | 2.9 Hz       | 3.7 Hz       | 20.4 Hz      |

## SPEKTRALANALYSE - FFT (DIN 4150-3)

