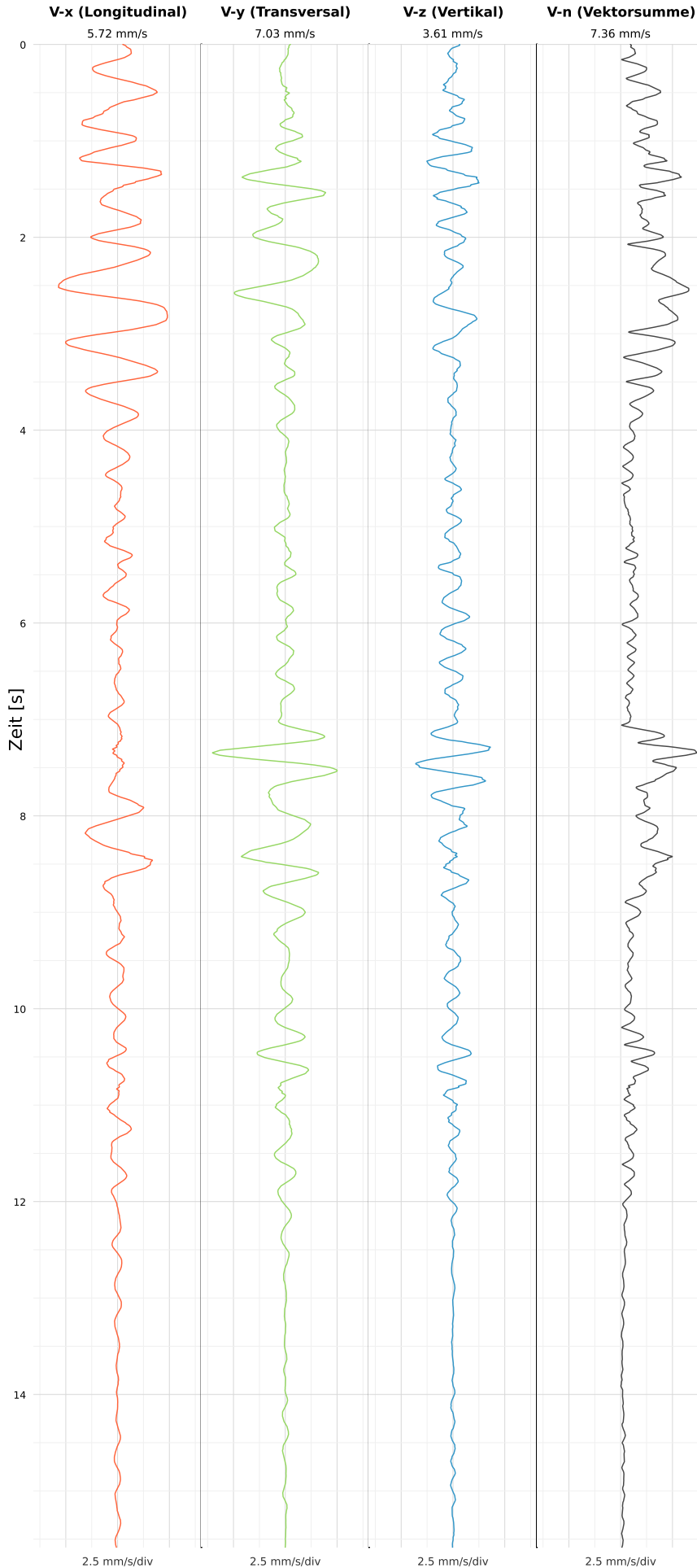


SCHWINGGESCHWINDIGKEIT



DATEI: 2494-HF49-30052026-114511_raw.csv

Aufzeichnungsdauer: 15.58 s | Abtastrate: 1000 Hz

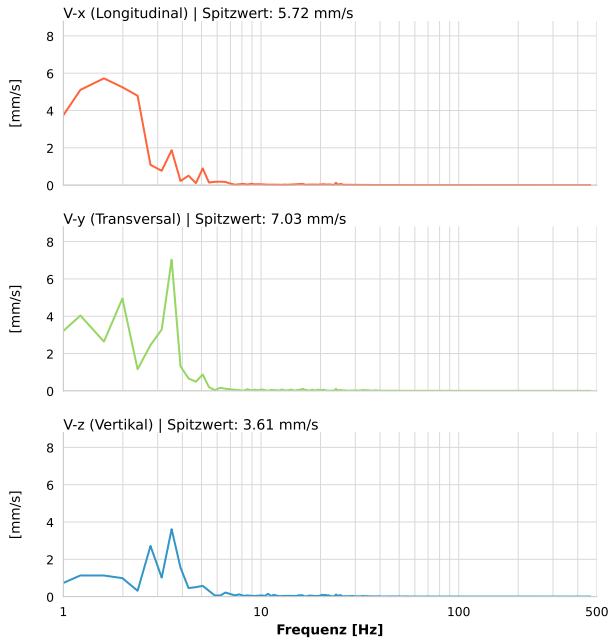
| | |
|------------------|---------------------------|
| Datum: | 30.05.2026 |
| Zeit: | 11:45:11 |
| Event-ID: | 2494-HF49-30052026-114511 |
| Kalibrier Datum: | 10.07.2025 |

Spitzwerte

| V-x (Longitudinal) | V-y (Transversal) | V-z (Vertikal) |
|--------------------|-------------------|------------------|
| 5.72 mm/s | 7.03 mm/s | 3.61 mm/s |
| 1.7 Hz | 1.9 Hz | 2.9 Hz |
| 114.49% von Limit | 140.60% von Limit | 72.28% von Limit |

V-n (Vektorsumme): 7.36 mm/s

SPEKTRALANALYSE - KOMPONENTEN FFT



| Kanal | Spitzwert | Spektrum 25% | Spektrum 50% | Spektrum 75% |
|-------|-----------|--------------|--------------|--------------|
| X | 5.72 mm/s | 1.6 Hz | 2.0 Hz | 3.1 Hz |
| Y | 7.03 mm/s | 1.6 Hz | 3.1 Hz | 3.5 Hz |
| Z | 3.61 mm/s | 2.8 Hz | 3.5 Hz | 6.6 Hz |

SPEKTRALANALYSE - FFT (DIN 4150-3)

