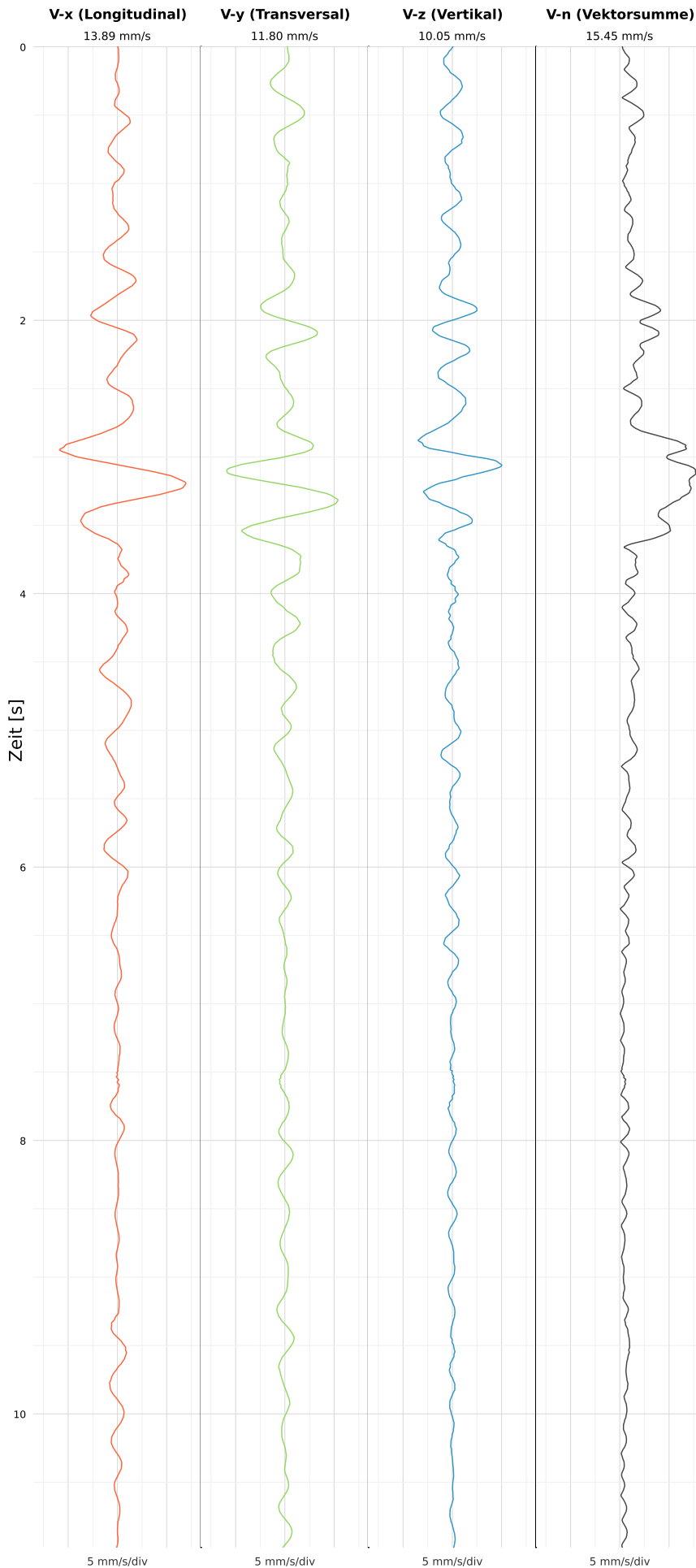


SCHWINGGESCHWINDIGKEIT



DATEI: 2494-HF49-30052026-112741_raw.csv

Aufzeichnungsdauer: 10.98 s | Abtastrate: 1000 Hz

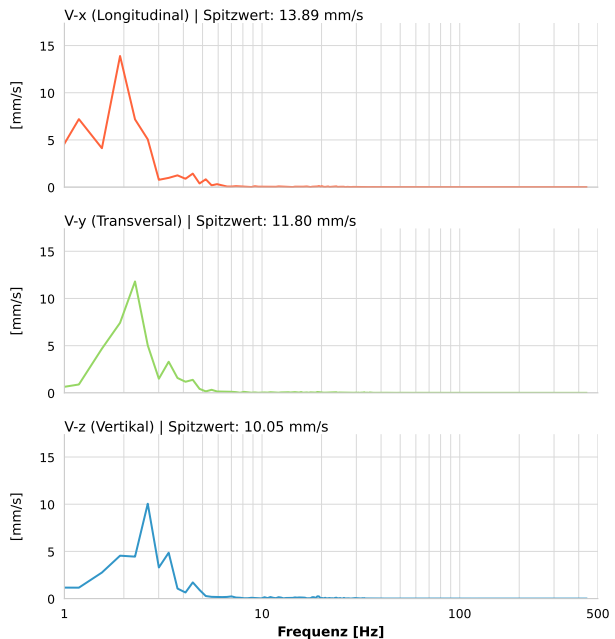
| | |
|------------------|---------------------------|
| Datum: | 30.05.2026 |
| Zeit: | 11:27:41 |
| Event-ID: | 2494-HF49-30052026-112741 |
| Kalibrier Datum: | 10.07.2025 |

Spitzwerte

| V-x (Longitudinal) | V-y (Transversal) | V-z (Vertikal) |
|--------------------|-------------------|-------------------|
| 13.89 mm/s | 11.80 mm/s | 10.05 mm/s |
| 1.9 Hz | 2.5 Hz | 2.6 Hz |
| 277.88% von Limit | 236.08% von Limit | 201.06% von Limit |

V-n (Vektorsumme): 15.45 mm/s

SPEKTRALANALYSE - KOMPONENTEN FFT



| Kanal | Spitzwert | Spektrum 25% | Spektrum 50% | Spektrum 75% |
|-------|------------|--------------|--------------|--------------|
| X | 13.89 mm/s | 1.5 Hz | 1.9 Hz | 2.6 Hz |
| Y | 11.80 mm/s | 1.9 Hz | 2.3 Hz | 3.4 Hz |
| Z | 10.05 mm/s | 2.3 Hz | 2.6 Hz | 3.7 Hz |

SPEKTRALANALYSE - FFT (DIN 4150-3)

