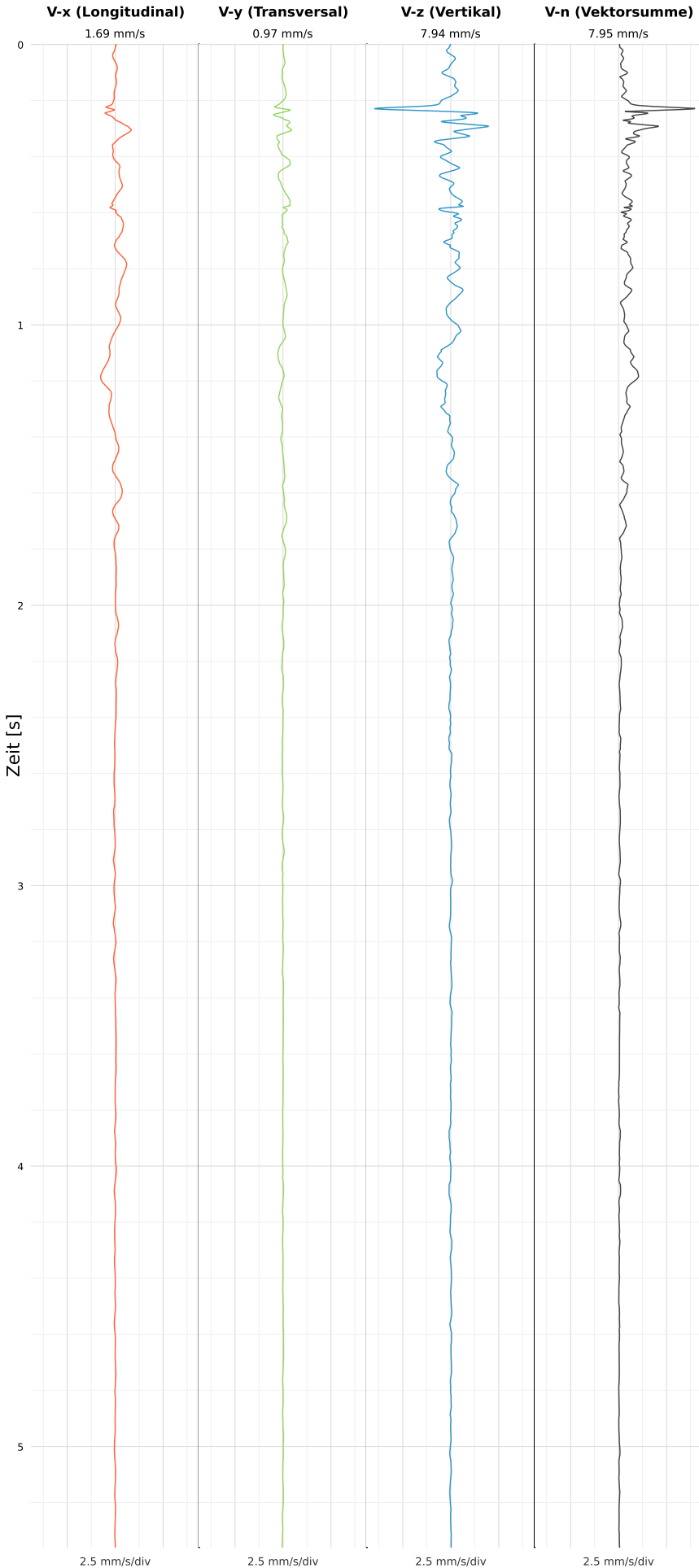


SCHWINGGESCHWINDIGKEIT



DATEI: 2493-PG4-21052026-213056\_raw.csv

Aufzeichnungsdauer: 5.36 s | Abtastrate: 1000 Hz

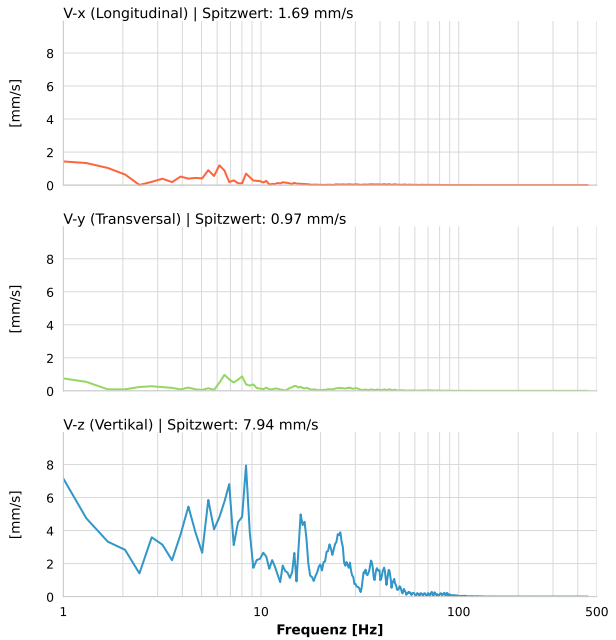
|                  |                          |
|------------------|--------------------------|
| Datum:           | 21.05.2026               |
| Zeit:            | 21:30:56                 |
| Event-ID:        | 2493-PG4-21052026-213056 |
| Kalibrier Datum: | 12.07.2025               |

Spitzwerte

| V-x (Longitudinal) | V-y (Transversal) | V-z (Vertikal)    |
|--------------------|-------------------|-------------------|
| 1.69 mm/s          | 0.97 mm/s         | 7.94 mm/s         |
| 0.7 Hz             | 6.5 Hz            | 0.7 Hz            |
| 33.79% von Limit   | 19.47% von Limit  | 158.79% von Limit |

V-n (Vektorsumme): 7.95 mm/s

SPEKTRALANALYSE - KOMPONENTEN FFT



| Kanal | Spitzwert | Spektrum 25% | Spektrum 50% | Spektrum 75% |
|-------|-----------|--------------|--------------|--------------|
| X     | 1.69 mm/s | 1.7 Hz       | 6.2 Hz       | 14.0 Hz      |
| Y     | 0.97 mm/s | 6.9 Hz       | 15.1 Hz      | 31.9 Hz      |
| Z     | 7.94 mm/s | 7.3 Hz       | 18.5 Hz      | 33.4 Hz      |

SPEKTRALANALYSE - FFT (DIN 4150-3)

