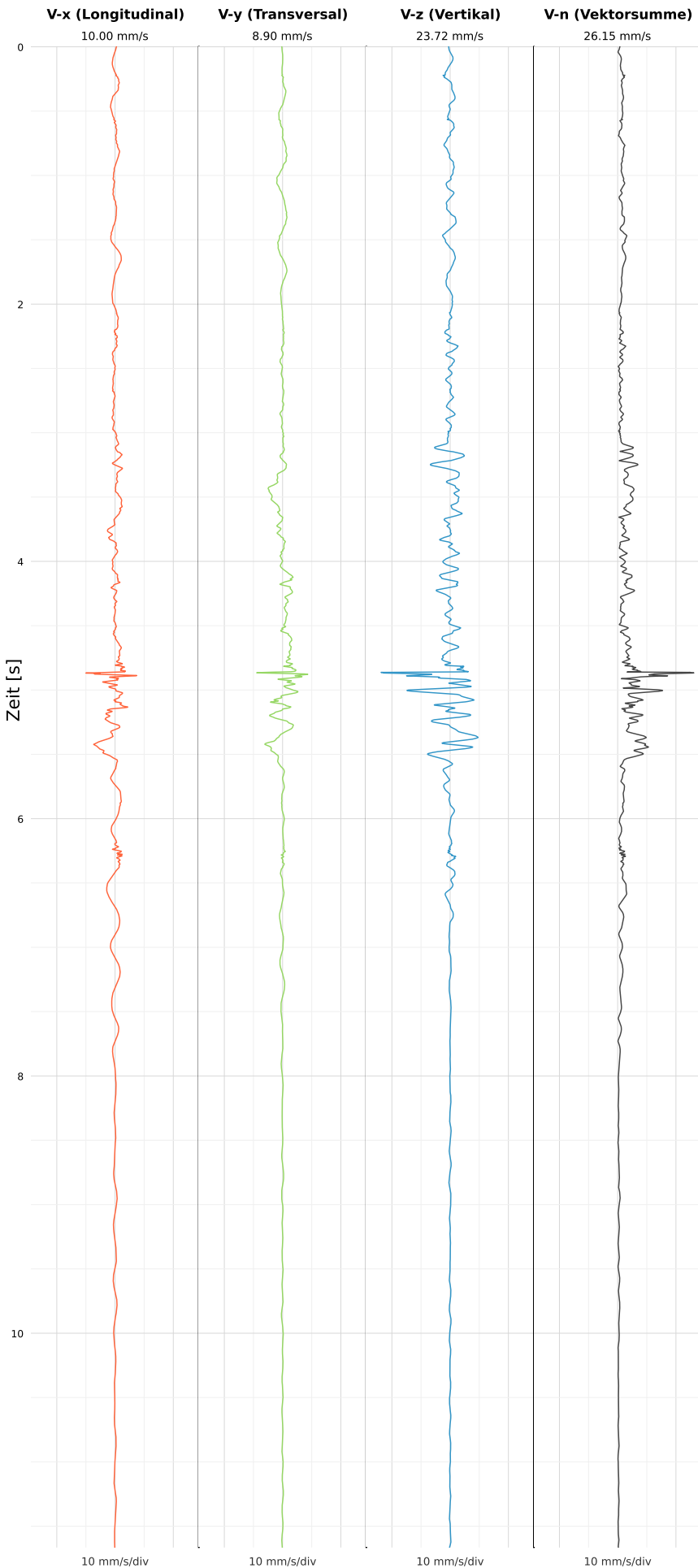


SCHWINGGESCHWINDIGKEIT



DATEI: 2493-PG4-19052026-190723_raw.csv

Aufzeichnungsdauer: 11.66 s | Abtastrate: 1000 Hz

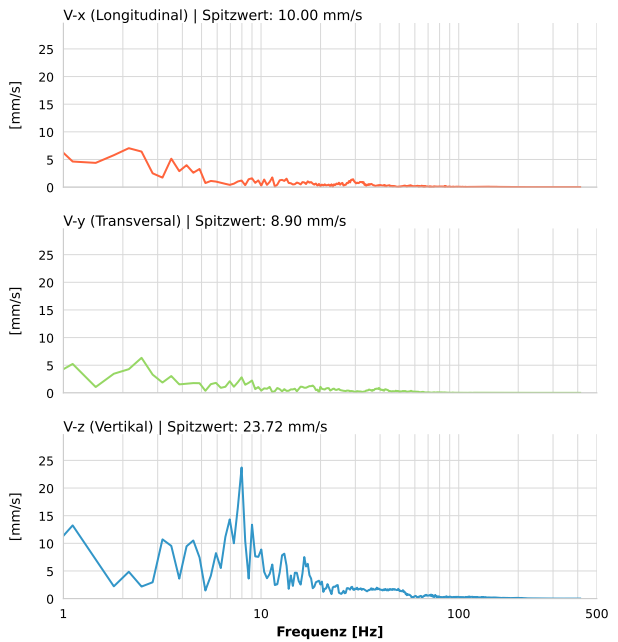
| | |
|-------------------------|--------------------------|
| Datum: | 19.05.2026 |
| Zeit: | 19:07:23 |
| Event-ID: | 2493-PG4-19052026-190723 |
| Kalibrier Datum: | 12.07.2025 |

Spitzwerte

| V-x (Longitudinal) | V-y (Transversal) | V-z (Vertikal) |
|--------------------|-------------------|-------------------|
| 10.00 mm/s | 8.90 mm/s | 23.72 mm/s |
| 0.8 Hz | 0.5 Hz | 8.0 Hz |
| 199.96% von Limit | 177.95% von Limit | 474.43% von Limit |

V-n (Vektorsumme): 26.15 mm/s

SPEKTRALANALYSE - KOMPONENTEN FFT



| Kanal | Spitzwert | Spektrum 25% | Spektrum 50% | Spektrum 75% |
|-------|------------|--------------|--------------|--------------|
| X | 10.00 mm/s | 2.8 Hz | 13.1 Hz | 35.1 Hz |
| Y | 8.90 mm/s | 3.2 Hz | 14.1 Hz | 37.8 Hz |
| Z | 23.72 mm/s | 7.6 Hz | 16.5 Hz | 44.3 Hz |

SPEKTRALANALYSE - FFT (DIN 4150-3)

