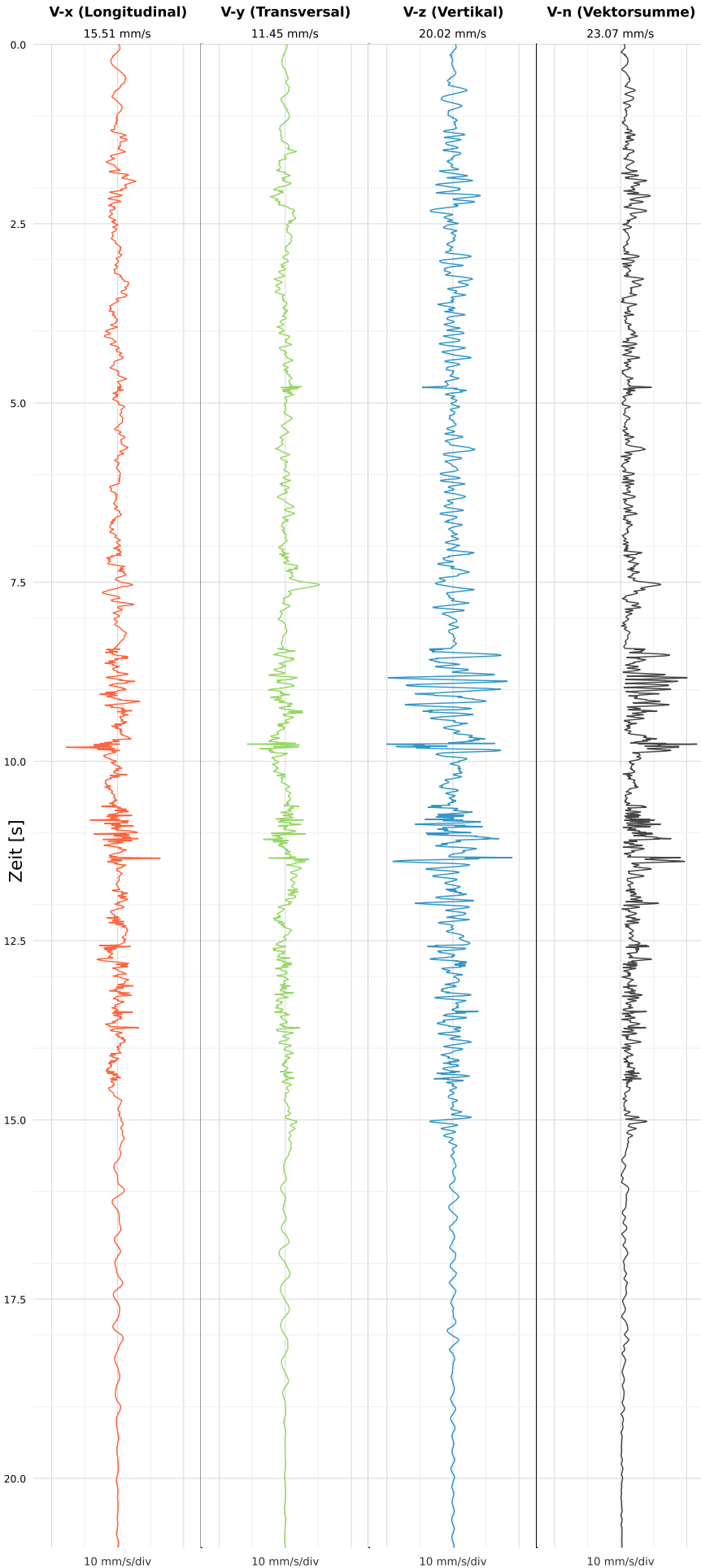


SCHWINGGESCHWINDIGKEIT



DATEI: 2493-PG4-19052026-190151_raw.csv

Aufzeichnungsdauer: 20.96 s | Abtastrate: 1000 Hz

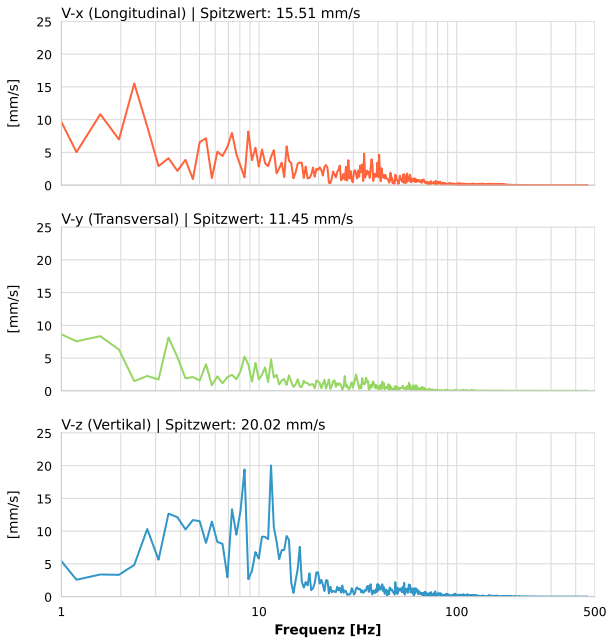
| | |
|------------------|--------------------------|
| Datum: | 19.05.2026 |
| Zeit: | 19:01:51 |
| Event-ID: | 2493-PG4-19052026-190151 |
| Kalibrier Datum: | 12.07.2025 |

Spitzwerte

| V-x (Longitudinal) | V-y (Transversal) | V-z (Vertikal) |
|--------------------|-------------------|-------------------|
| 15.51 mm/s | 11.45 mm/s | 20.02 mm/s |
| 2.2 Hz | 0.3 Hz | 10.5 Hz |
| 310.23% von Limit | 229.06% von Limit | 390.75% von Limit |

V-n (Vektorsumme): 23.07 mm/s

SPEKTRALANALYSE - KOMPONENTEN FFT



| Kanal | Spitzwert | Spektrum 25% | Spektrum 50% | Spektrum 75% |
|-------|------------|--------------|--------------|--------------|
| X | 15.51 mm/s | 6.5 Hz | 18.8 Hz | 40.5 Hz |
| Y | 11.45 mm/s | 3.9 Hz | 13.4 Hz | 35.2 Hz |
| Z | 20.02 mm/s | 6.5 Hz | 11.9 Hz | 35.2 Hz |

SPEKTRALANALYSE - FFT (DIN 4150-3)

