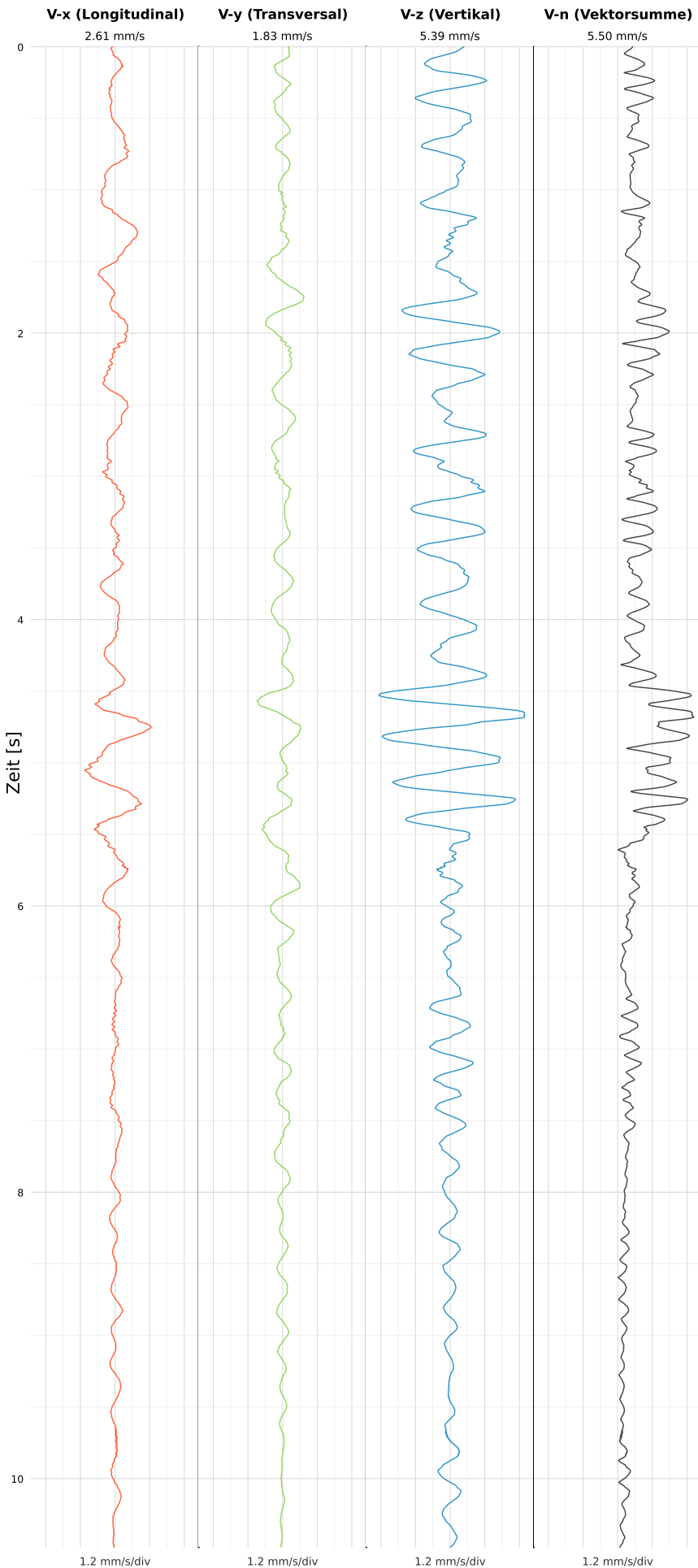


SCHWINGGESCHWINDIGKEIT



DATEI: 2493-PG4-19052026-185837\_raw.csv

Aufzeichnungsdauer: 10.48 s | Abtastrate: 1000 Hz

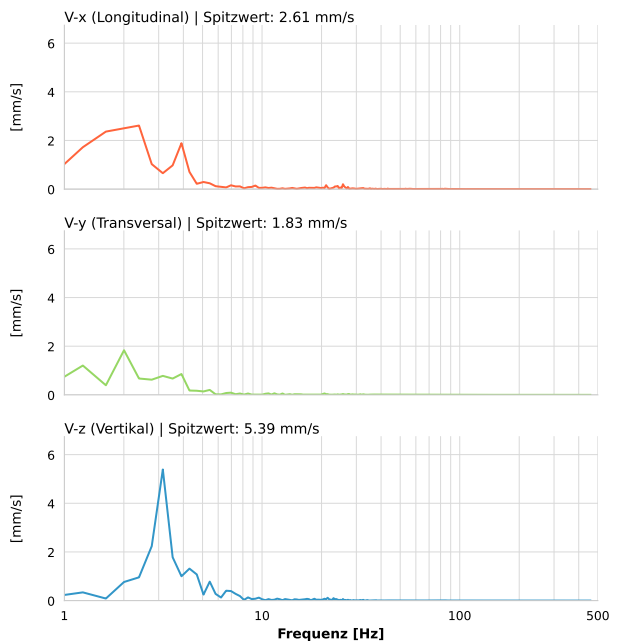
|                  |                          |
|------------------|--------------------------|
| Datum:           | 19.05.2026               |
| Zeit:            | 18:58:37                 |
| Event-ID:        | 2493-PG4-19052026-185837 |
| Kalibrier Datum: | 12.07.2025               |

Spitzwerte

| V-x (Longitudinal) | V-y (Transversal) | V-z (Vertikal)    |
|--------------------|-------------------|-------------------|
| 2.61 mm/s          | 1.83 mm/s         | 5.39 mm/s         |
| 2.2 Hz             | 2.0 Hz            | 3.1 Hz            |
| 52.26% von Limit   | 36.68% von Limit  | 107.80% von Limit |

V-n (Vektorsumme): 5.50 mm/s

SPEKTRALANALYSE - KOMPONENTEN FFT



| Kanal | Spitzwert | Spektrum 25% | Spektrum 50% | Spektrum 75% |
|-------|-----------|--------------|--------------|--------------|
| X     | 2.61 mm/s | 2.0 Hz       | 2.8 Hz       | 5.8 Hz       |
| Y     | 1.83 mm/s | 2.0 Hz       | 3.1 Hz       | 6.6 Hz       |
| Z     | 5.39 mm/s | 3.1 Hz       | 3.5 Hz       | 6.6 Hz       |

SPEKTRALANALYSE - FFT (DIN 4150-3)

