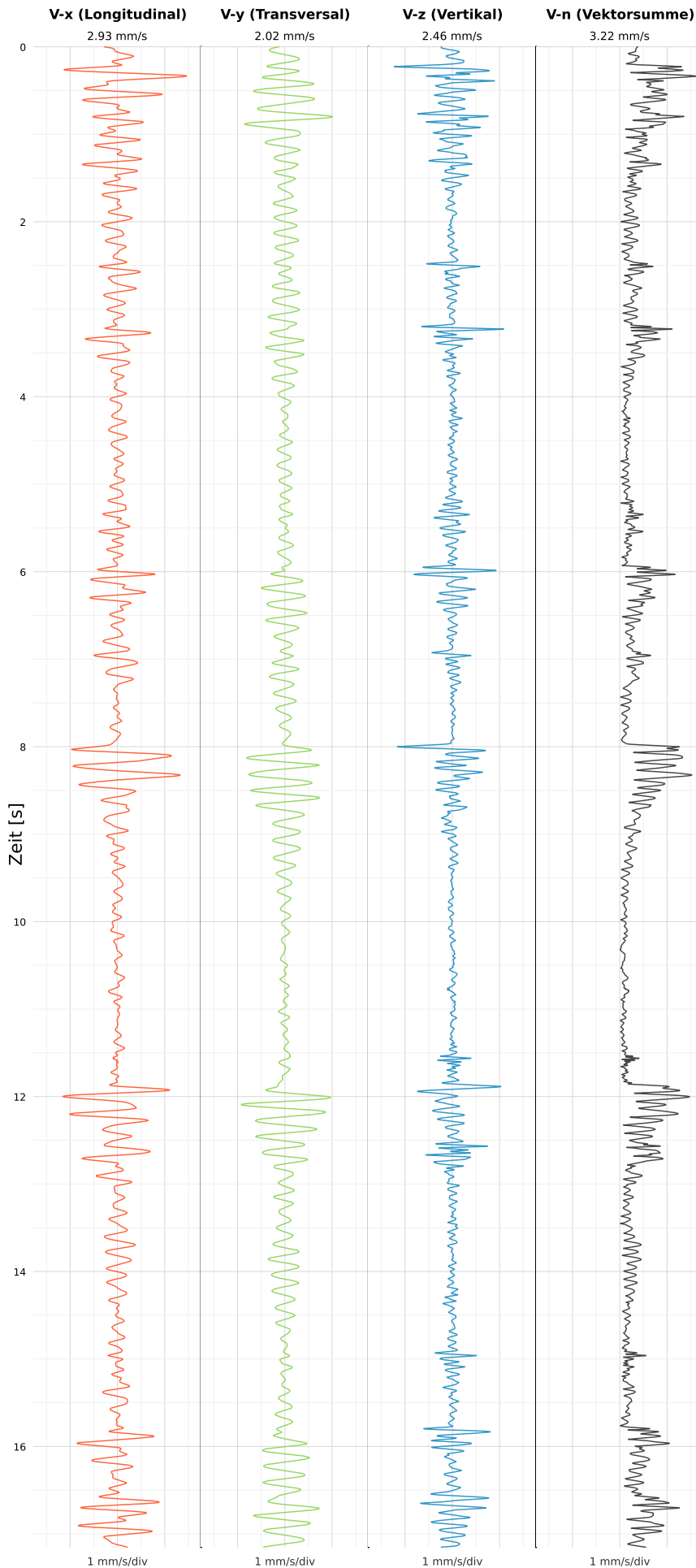


SCHWINGGESCHWINDIGKEIT



DATEI: 2493-PG4-19052026-121025\_raw.csv

Aufzeichnungsdauer: 17.15 s | Abtastrate: 1000 Hz

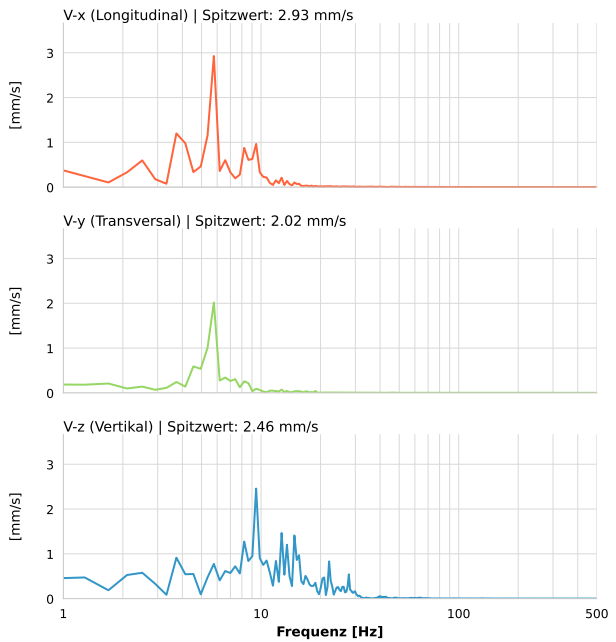
|                  |                          |
|------------------|--------------------------|
| Datum:           | 19.05.2026               |
| Zeit:            | 12:10:25                 |
| Event-ID:        | 2493-PG4-19052026-121025 |
| Kalibrier Datum: | 12.07.2025               |

Spitzwerte

| V-x (Longitudinal) | V-y (Transversal) | V-z (Vertikal)   |
|--------------------|-------------------|------------------|
| 2.93 mm/s          | 2.02 mm/s         | 2.46 mm/s        |
| 5.5 Hz             | 5.5 Hz            | 9.5 Hz           |
| 58.57% von Limit   | 40.31% von Limit  | 49.14% von Limit |

V-n (Vektorsumme): 3.22 mm/s

SPEKTRALANALYSE - KOMPONENTEN FFT



| Kanal | Spitzwert | Spektrum 25% | Spektrum 50% | Spektrum 75% |
|-------|-----------|--------------|--------------|--------------|
| X     | 2.93 mm/s | 4.5 Hz       | 5.8 Hz       | 9.4 Hz       |
| Y     | 2.02 mm/s | 5.0 Hz       | 5.8 Hz       | 8.2 Hz       |
| Z     | 2.46 mm/s | 8.2 Hz       | 12.3 Hz      | 18.4 Hz      |

SPEKTRALANALYSE - FFT (DIN 4150-3)

