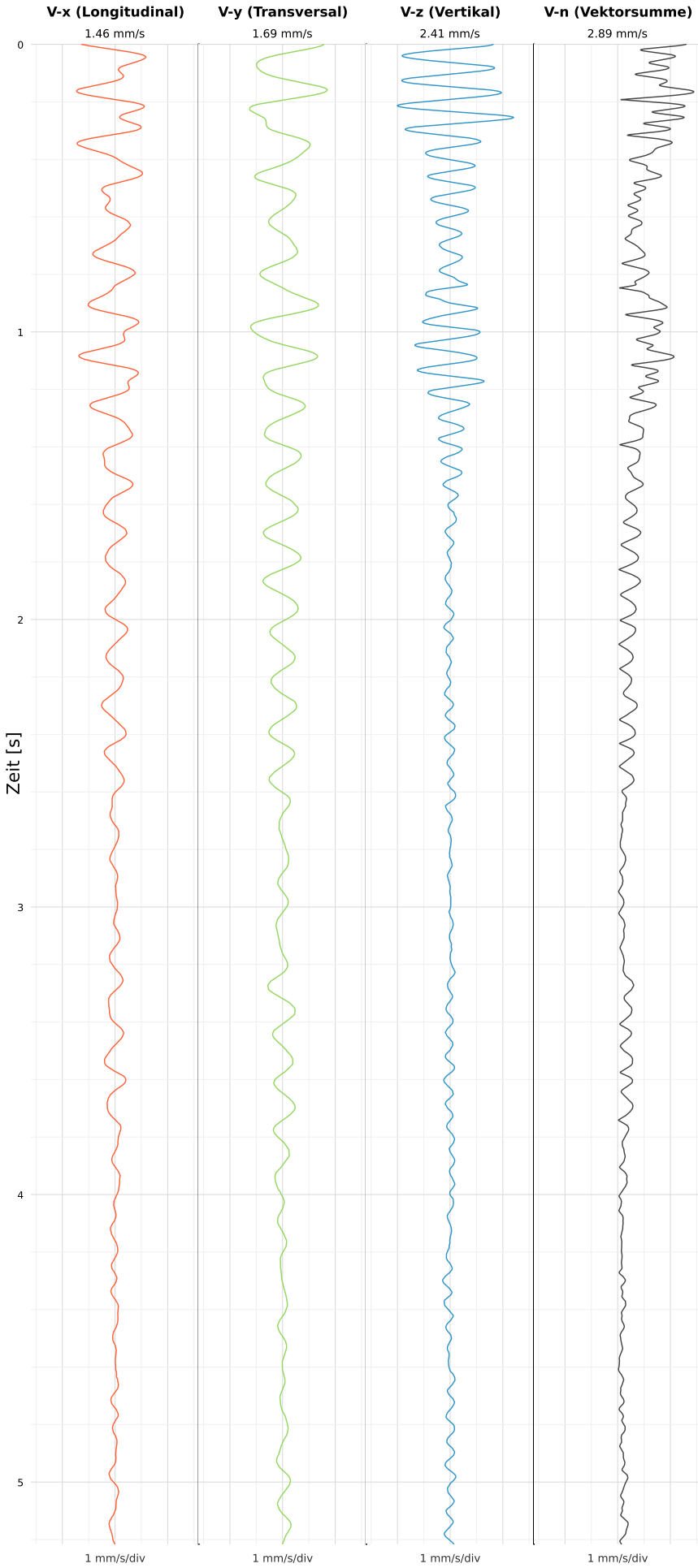


SCHWINGGESCHWINDIGKEIT



DATEI: 2493-PG4-18052026-145512\_raw.csv

Aufzeichnungsdauer: 5.22 s | Abtastrate: 1000 Hz

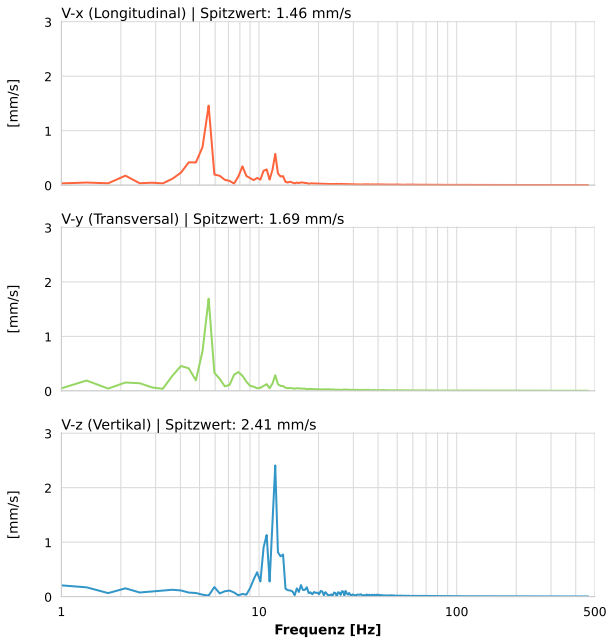
|                  |                          |
|------------------|--------------------------|
| Datum:           | 18.05.2026               |
| Zeit:            | 14:55:12                 |
| Event-ID:        | 2493-PG4-18052026-145512 |
| Kalibrier Datum: | 12.07.2025               |

Spitzwerte

| V-x (Longitudinal) | V-y (Transversal) | V-z (Vertikal)   |
|--------------------|-------------------|------------------|
| 1.46 mm/s          | 1.69 mm/s         | 2.41 mm/s        |
| 5.6 Hz             | 5.8 Hz            | 12.1 Hz          |
| 29.20% von Limit   | 33.87% von Limit  | 43.62% von Limit |

V-n (Vektorsumme): 2.89 mm/s

SPEKTRALANALYSE - KOMPONENTEN FFT



| Kanal | Spitzwert | Spektrum 25% | Spektrum 50% | Spektrum 75% |
|-------|-----------|--------------|--------------|--------------|
| X     | 1.46 mm/s | 5.6 Hz       | 11.3 Hz      | 41.2 Hz      |
| Y     | 1.69 mm/s | 5.6 Hz       | 9.0 Hz       | 50.4 Hz      |
| Z     | 2.41 mm/s | 10.9 Hz      | 12.8 Hz      | 40.5 Hz      |

SPEKTRALANALYSE - FFT (DIN 4150-3)

