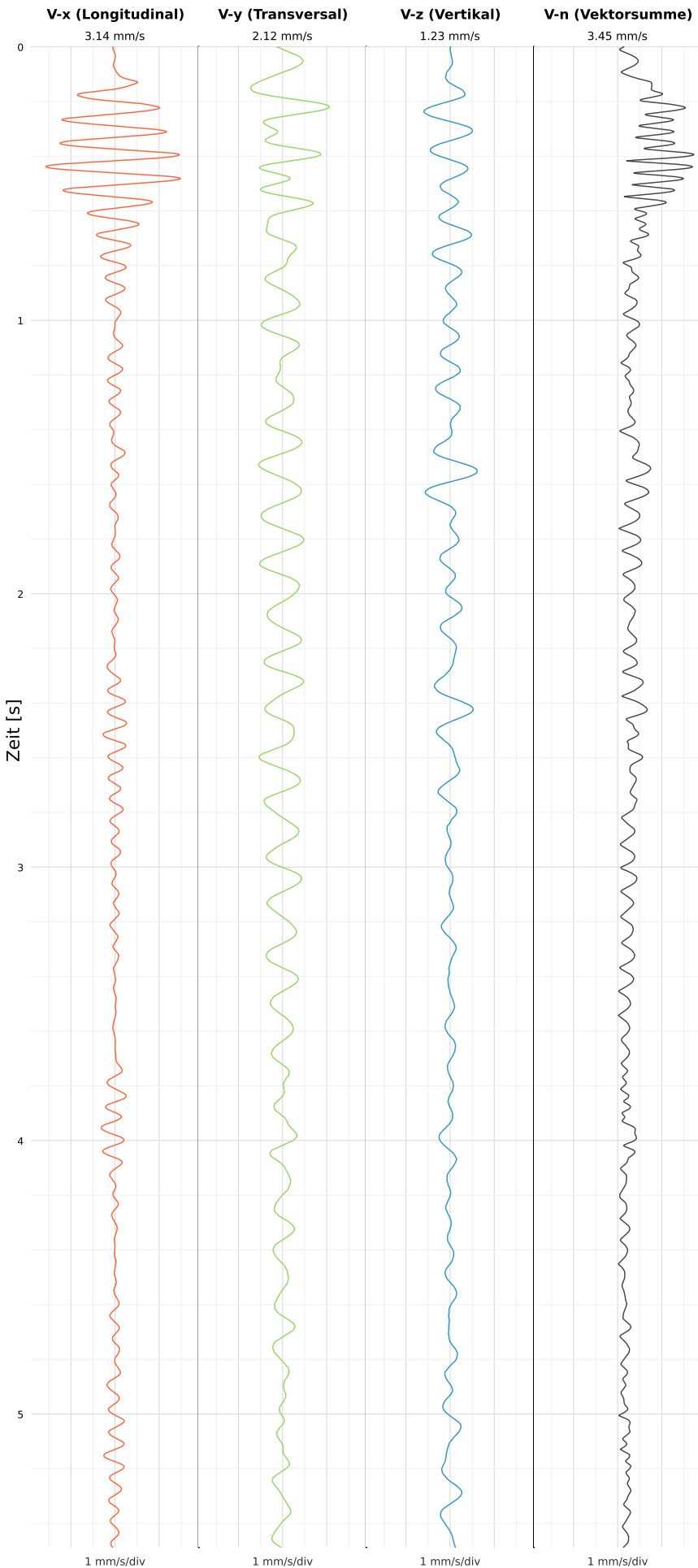


SCHWINGGESCHWINDIGKEIT



DATEI: 2493-PG4-16052026-144328_raw.csv

Aufzeichnungsdauer: 5.49 s | Abtastrate: 1000 Hz

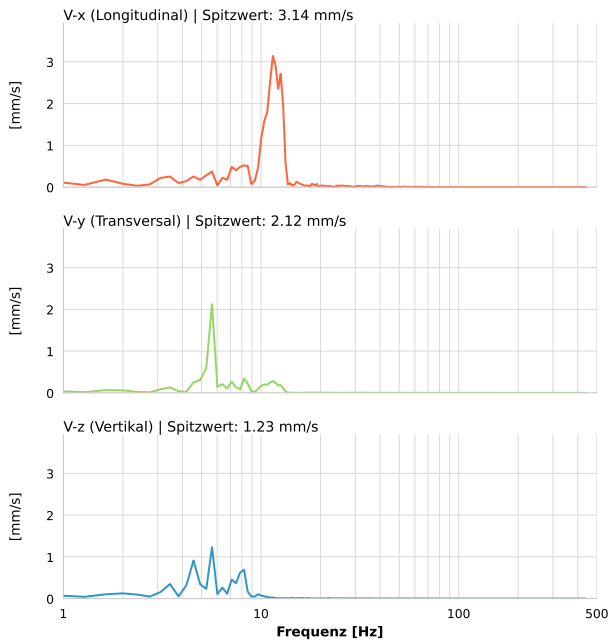
| | |
|------------------|--------------------------|
| Datum: | 16.05.2026 |
| Zeit: | 14:43:28 |
| Event-ID: | 2493-PG4-16052026-144328 |
| Kalibrier Datum: | 12.07.2025 |

Spitzwerte

| V-x (Longitudinal) | V-y (Transversal) | V-z (Vertikal) |
|--------------------|-------------------|------------------|
| 3.14 mm/s | 2.12 mm/s | 1.23 mm/s |
| 11.7 Hz | 5.6 Hz | 8.0 Hz |
| 57.99% von Limit | 42.41% von Limit | 24.61% von Limit |

V-n (Vektorsumme): 3.45 mm/s

SPEKTRALANALYSE - KOMPONENTEN FFT



| Kanal | Spitzwert | Spektrum 25% | Spektrum 50% | Spektrum 75% |
|-------|-----------|--------------|--------------|--------------|
| X | 3.14 mm/s | 10.4 Hz | 11.5 Hz | 12.6 Hz |
| Y | 2.12 mm/s | 5.6 Hz | 6.0 Hz | 10.8 Hz |
| Z | 1.23 mm/s | 4.6 Hz | 6.0 Hz | 8.2 Hz |

SPEKTRALANALYSE - FFT (DIN 4150-3)

