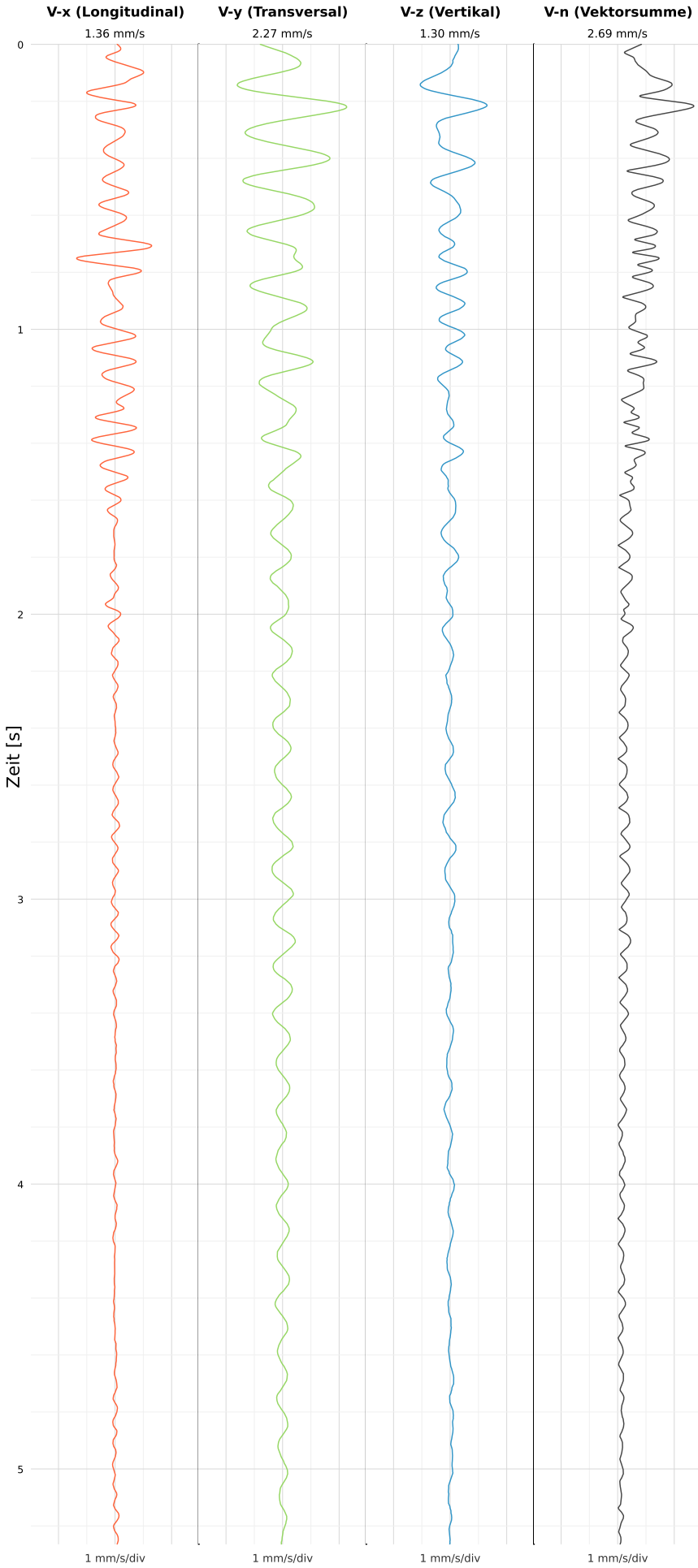


SCHWINGGESCHWINDIGKEIT



DATEI: 2493-PG4-16052026-011203_raw.csv

Aufzeichnungsdauer: 5.26 s | Abtastrate: 1000 Hz

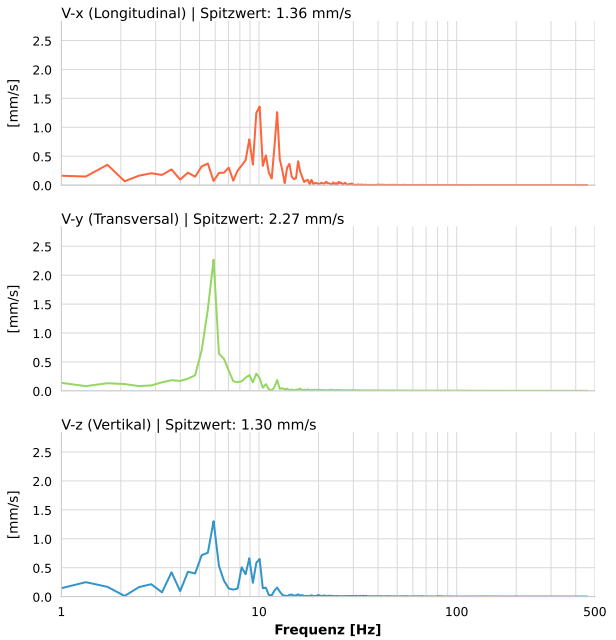
| | |
|------------------|--------------------------|
| Datum: | 16.05.2026 |
| Zeit: | 01:12:03 |
| Event-ID: | 2493-PG4-16052026-011203 |
| Kalibrier Datum: | 12.07.2025 |

Spitzwerte

| V-x (Longitudinal) | V-y (Transversal) | V-z (Vertikal) |
|--------------------|-------------------|------------------|
| 1.36 mm/s | 2.27 mm/s | 1.30 mm/s |
| 9.9 Hz | 5.9 Hz | 5.9 Hz |
| 27.18% von Limit | 45.35% von Limit | 26.10% von Limit |

V-n (Vektorsumme): 2.69 mm/s

SPEKTRALANALYSE - KOMPONENTEN FFT



| Kanal | Spitzwert | Spektrum 25% | Spektrum 50% | Spektrum 75% |
|-------|-----------|--------------|--------------|--------------|
| X | 1.36 mm/s | 7.8 Hz | 10.1 Hz | 12.7 Hz |
| Y | 2.27 mm/s | 5.5 Hz | 6.3 Hz | 10.8 Hz |
| Z | 1.30 mm/s | 5.1 Hz | 6.6 Hz | 10.1 Hz |

SPEKTRALANALYSE - FFT (DIN 4150-3)

