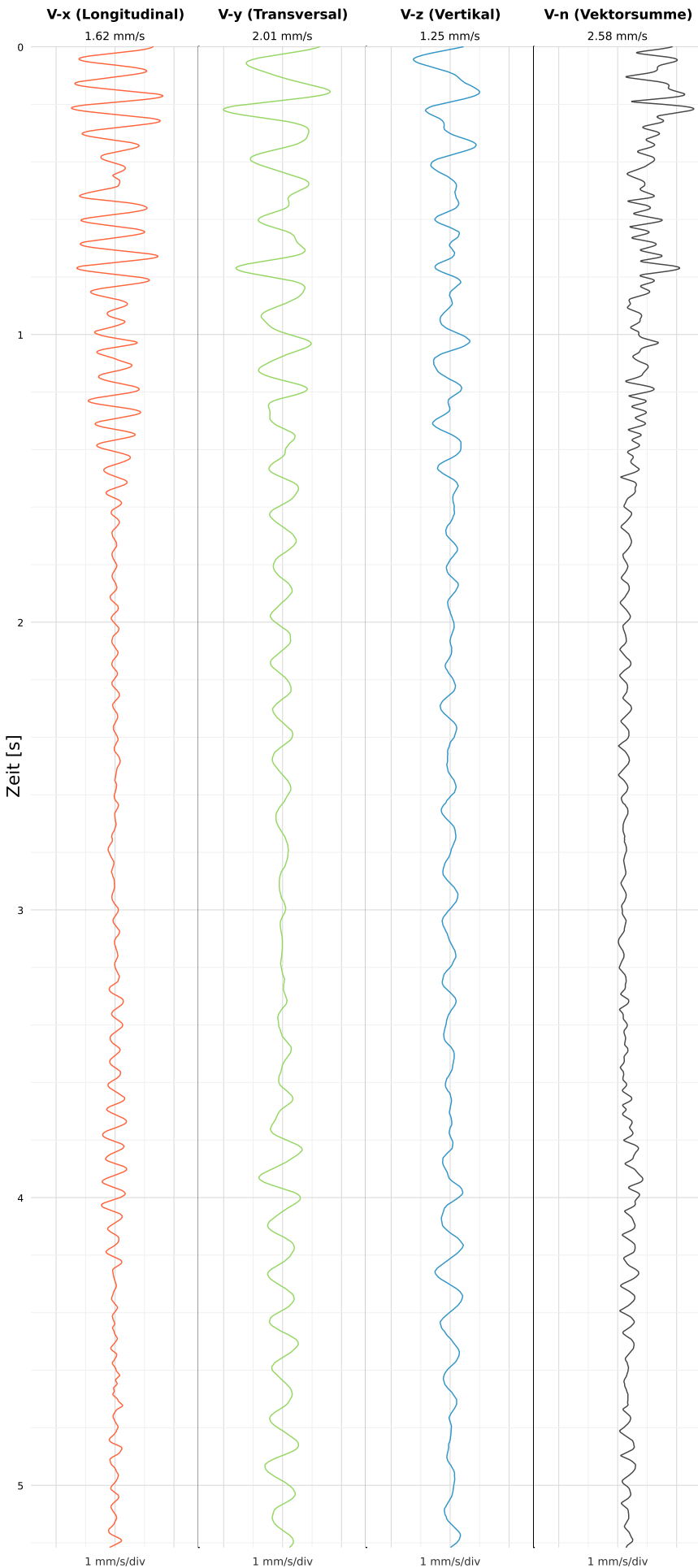


SCHWINGGESCHWINDIGKEIT



DATEI: 2493-PG4-15052026-181904_raw.csv

Aufzeichnungsdauer: 5.22 s | Abtastrate: 1000 Hz

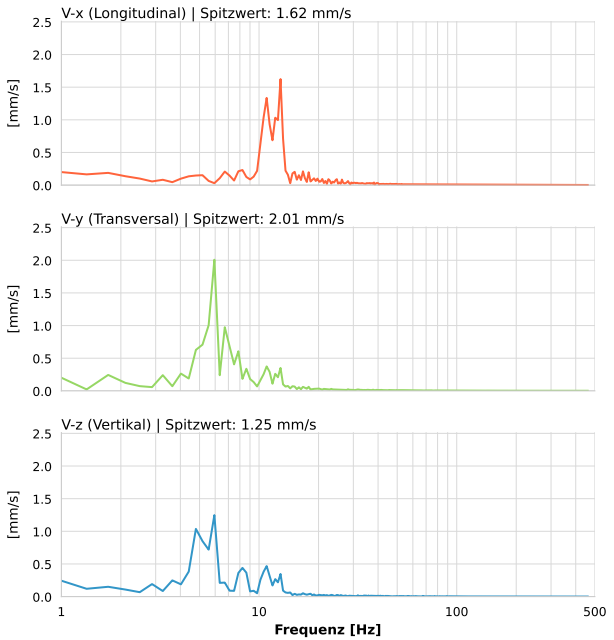
| | |
|------------------|--------------------------|
| Datum: | 15.05.2026 |
| Zeit: | 18:19:04 |
| Event-ID: | 2493-PG4-15052026-181904 |
| Kalibrier Datum: | 12.07.2025 |

Spitzwerte

| V-x (Longitudinal) | V-y (Transversal) | V-z (Vertikal) |
|--------------------|-------------------|------------------|
| 1.62 mm/s | 2.01 mm/s | 1.25 mm/s |
| 12.8 Hz | 5.8 Hz | 5.8 Hz |
| 28.44% von Limit | 40.17% von Limit | 24.96% von Limit |

V-n (Vektorsumme): 2.58 mm/s

SPEKTRALANALYSE - KOMPONENTEN FFT



| Kanal | Spitzwert | Spektrum 25% | Spektrum 50% | Spektrum 75% |
|-------|-----------|--------------|--------------|--------------|
| X | 1.62 mm/s | 10.9 Hz | 12.8 Hz | 37.0 Hz |
| Y | 2.01 mm/s | 5.9 Hz | 7.9 Hz | 20.9 Hz |
| Z | 1.25 mm/s | 5.2 Hz | 8.2 Hz | 13.6 Hz |

SPEKTRALANALYSE - FFT (DIN 4150-3)

