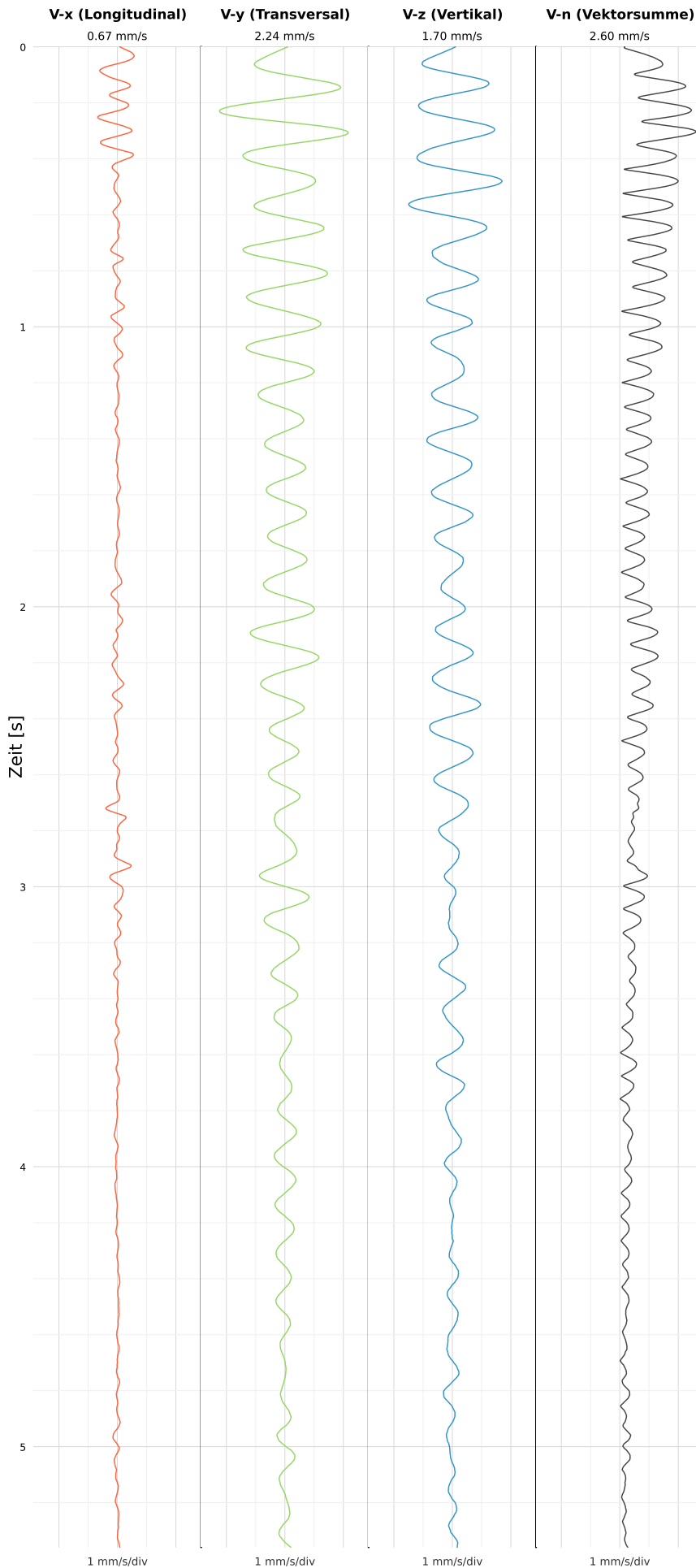


SCHWINGGESCHWINDIGKEIT



DATEI: 2493-PG4-14052026-091847_raw.csv

Aufzeichnungsdauer: 5.36 s | Abtastrate: 1000 Hz

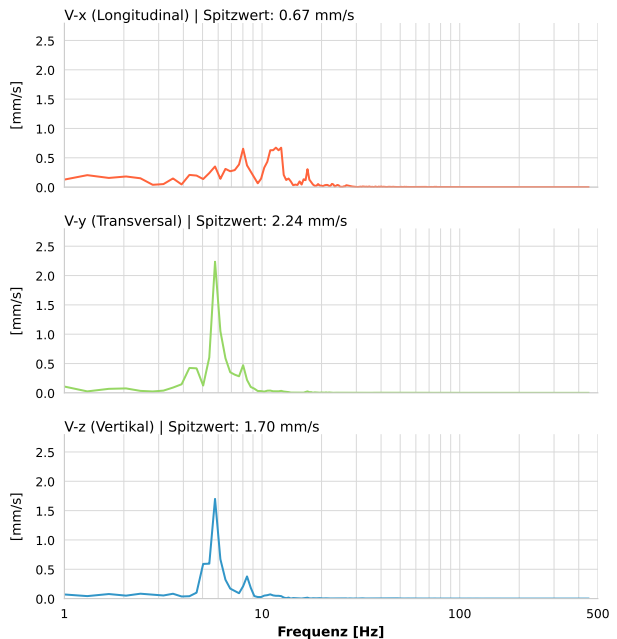
| | |
|------------------|--------------------------|
| Datum: | 14.05.2026 |
| Zeit: | 11:18:47 |
| Event-ID: | 2493-PG4-14052026-091847 |
| Kalibrier Datum: | 12.07.2025 |

Spitzwerte

| V-x (Longitudinal) | V-y (Transversal) | V-z (Vertikal) |
|--------------------|-------------------|------------------|
| 0.67 mm/s | 2.24 mm/s | 1.70 mm/s |
| 11.8 Hz | 5.8 Hz | 5.8 Hz |
| 12.37% von Limit | 44.71% von Limit | 34.00% von Limit |

V-n (Vektorsumme): 2.60 mm/s

SPEKTRALANALYSE - KOMPONENTEN FFT



| Kanal | Spitzwert | Spektrum 25% | Spektrum 50% | Spektrum 75% |
|-------|-----------|--------------|--------------|--------------|
| X | 0.67 mm/s | 6.9 Hz | 10.6 Hz | 12.5 Hz |
| Y | 2.24 mm/s | 5.4 Hz | 5.8 Hz | 7.3 Hz |
| Z | 1.70 mm/s | 5.4 Hz | 5.8 Hz | 8.0 Hz |

SPEKTRALANALYSE - FFT (DIN 4150-3)

