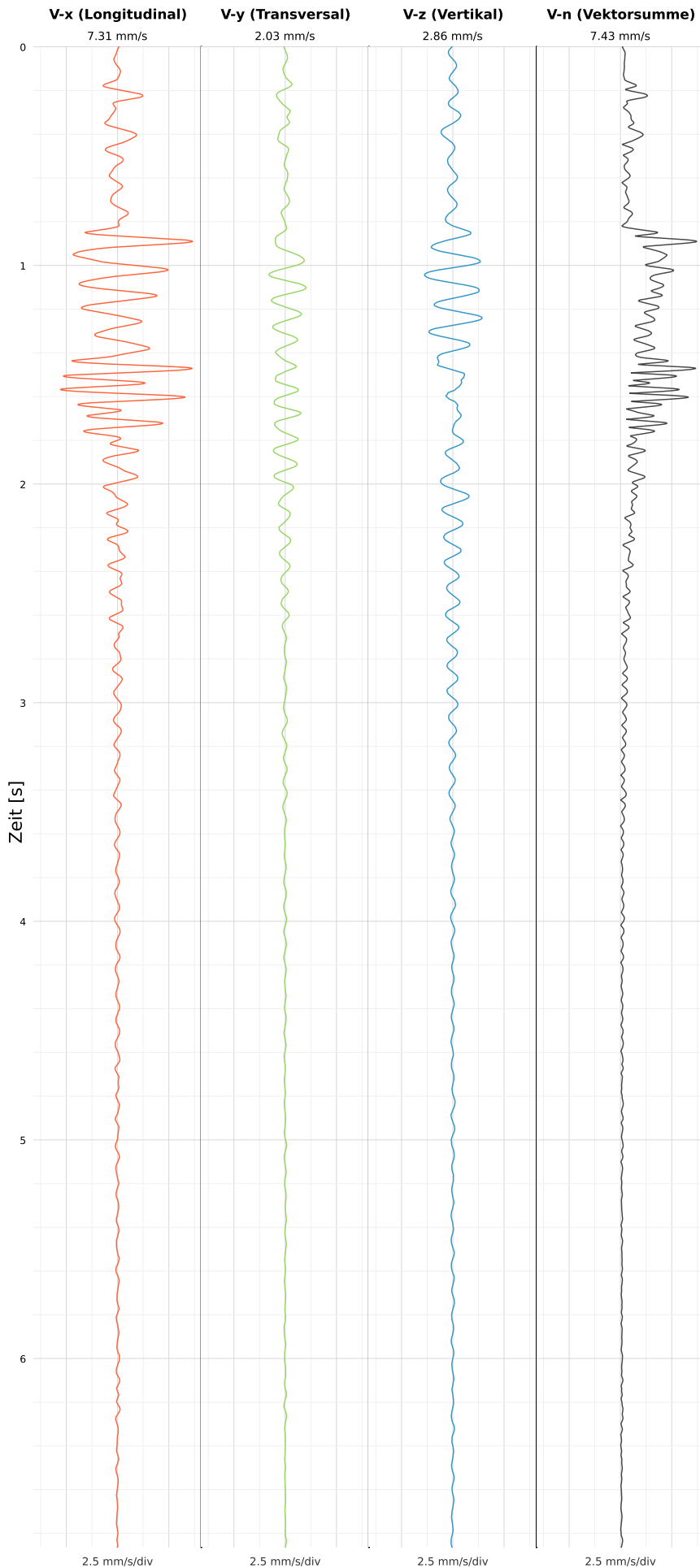


SCHWINGGESCHWINDIGKEIT



DATEI: 2493-PG4-13052026-075656\_raw.csv

Aufzeichnungsdauer: 6.86 s | Abtastrate: 1000 Hz

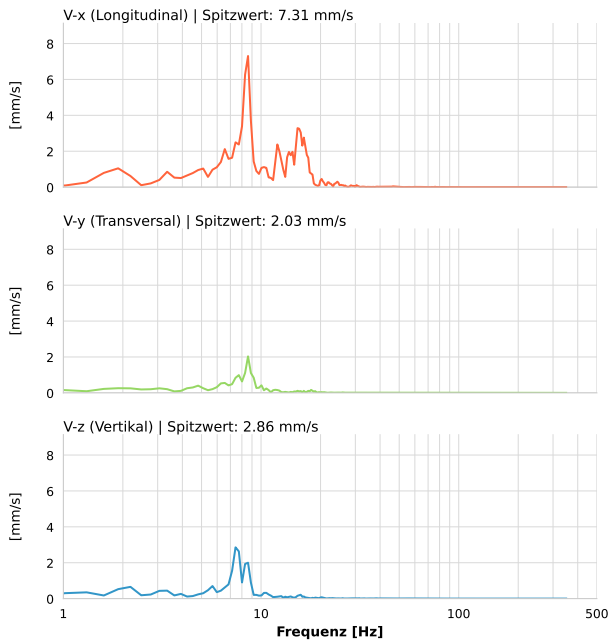
|                  |                          |
|------------------|--------------------------|
| Datum:           | 13.05.2026               |
| Zeit:            | 09:56:56                 |
| Event-ID:        | 2493-PG4-13052026-075656 |
| Kalibrier Datum: | 12.07.2025               |

Spitzwerte

| V-x (Longitudinal) | V-y (Transversal) | V-z (Vertikal)   |
|--------------------|-------------------|------------------|
| 7.31 mm/s          | 2.03 mm/s         | 2.86 mm/s        |
| 8.6 Hz             | 8.6 Hz            | 7.6 Hz           |
| 146.15% von Limit  | 40.69% von Limit  | 57.15% von Limit |

V-n (Vektorsumme): 7.43 mm/s

SPEKTRALANALYSE - KOMPONENTEN FFT



| Kanal | Spitzwert | Spektrum 25% | Spektrum 50% | Spektrum 75% |
|-------|-----------|--------------|--------------|--------------|
| X     | 7.31 mm/s | 8.0 Hz       | 11.2 Hz      | 15.6 Hz      |
| Y     | 2.03 mm/s | 6.3 Hz       | 8.3 Hz       | 9.8 Hz       |
| Z     | 2.86 mm/s | 6.3 Hz       | 7.7 Hz       | 8.9 Hz       |

SPEKTRALANALYSE - FFT (DIN 4150-3)

