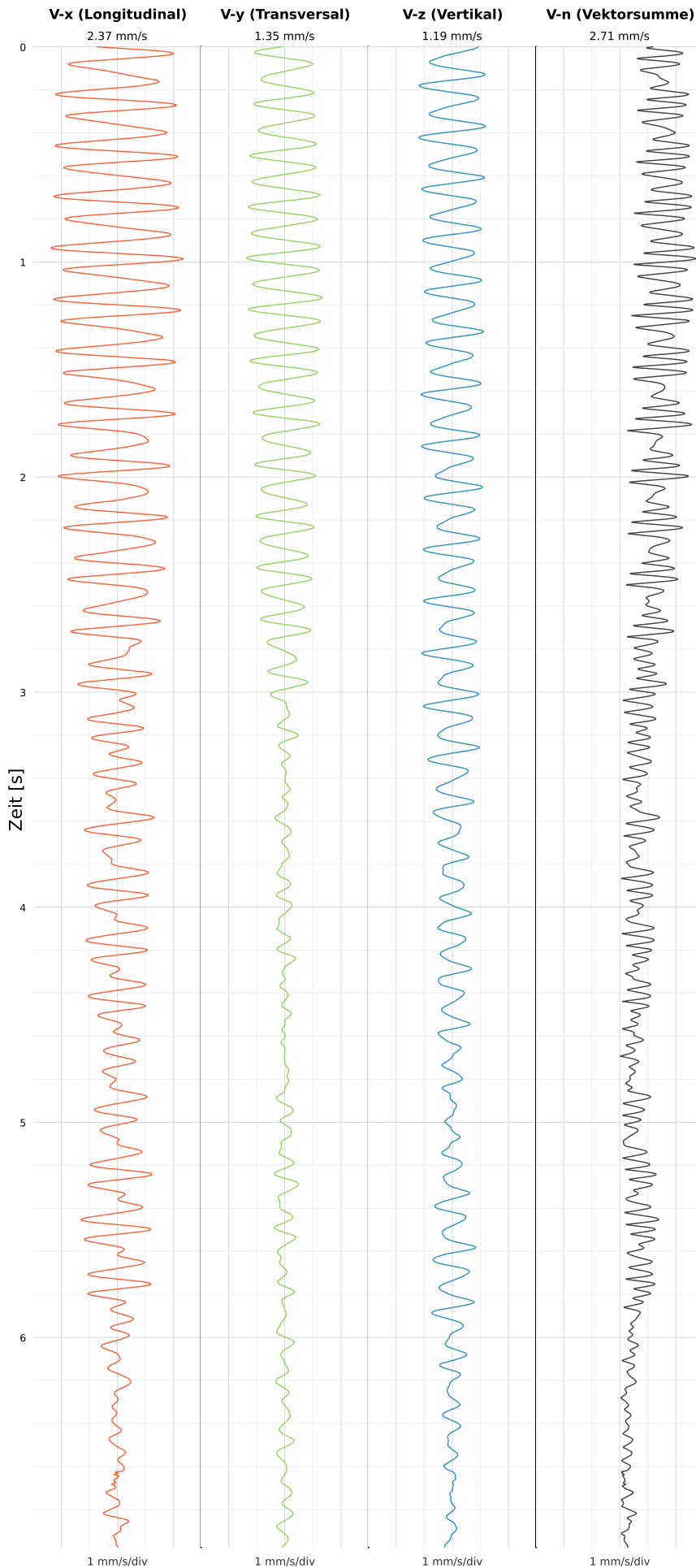


SCHWINGGESCHWINDIGKEIT



DATEI: 2493-PG4-12052026-223727_raw.csv

Aufzeichnungsdauer: 6.98 s | Abtastrate: 1000 Hz

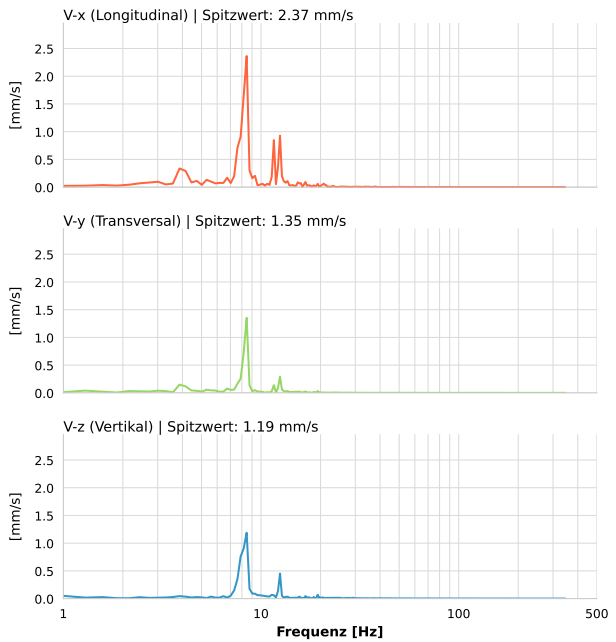
| | |
|-------------------------|--------------------------|
| Datum: | 13.05.2026 |
| Zeit: | 00:37:27 |
| Event-ID: | 2493-PG4-12052026-223727 |
| Kalibrier Datum: | 12.07.2025 |

Spitzwerte

| V-x (Longitudinal) | V-y (Transversal) | V-z (Vertikal) |
|--------------------|-------------------|------------------|
| 2.37 mm/s | 1.35 mm/s | 1.19 mm/s |
| 8.5 Hz | 8.5 Hz | 8.5 Hz |
| 47.30% von Limit | 27.09% von Limit | 23.76% von Limit |

V-n (Vektorsumme): 2.71 mm/s

SPEKTRALANALYSE - KOMPONENTEN FFT



| Kanal | Spitzwert | Spektrum 25% | Spektrum 50% | Spektrum 75% |
|-------|-----------|--------------|--------------|--------------|
| X | 2.37 mm/s | 7.9 Hz | 8.5 Hz | 12.5 Hz |
| Y | 1.35 mm/s | 7.9 Hz | 8.5 Hz | 11.6 Hz |
| Z | 1.19 mm/s | 8.2 Hz | 8.5 Hz | 19.9 Hz |

SPEKTRALANALYSE - FFT (DIN 4150-3)

