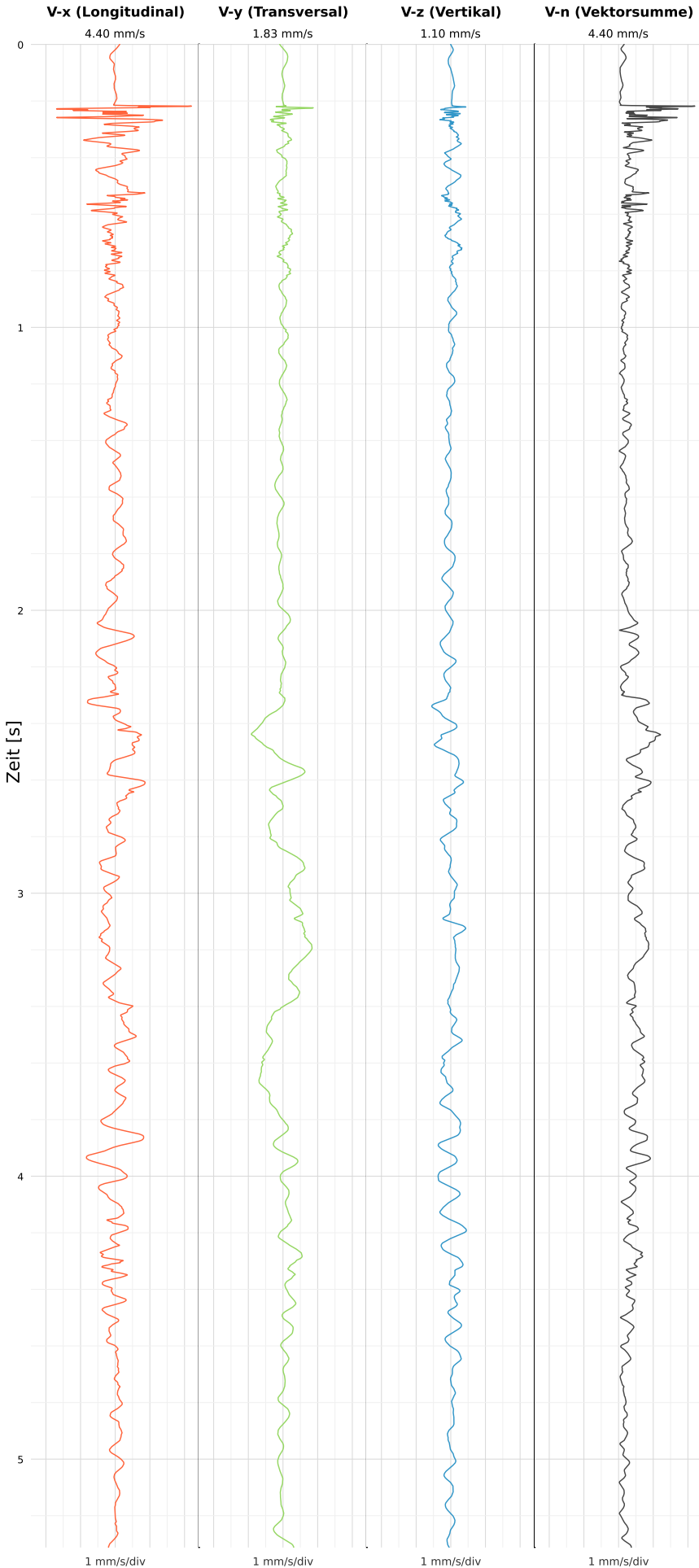


SCHWINGGESCHWINDIGKEIT



DATEI: 2493-PG4-12052026-215158_raw.csv

Aufzeichnungsdauer: 5.31 s | Abtastrate: 1000 Hz

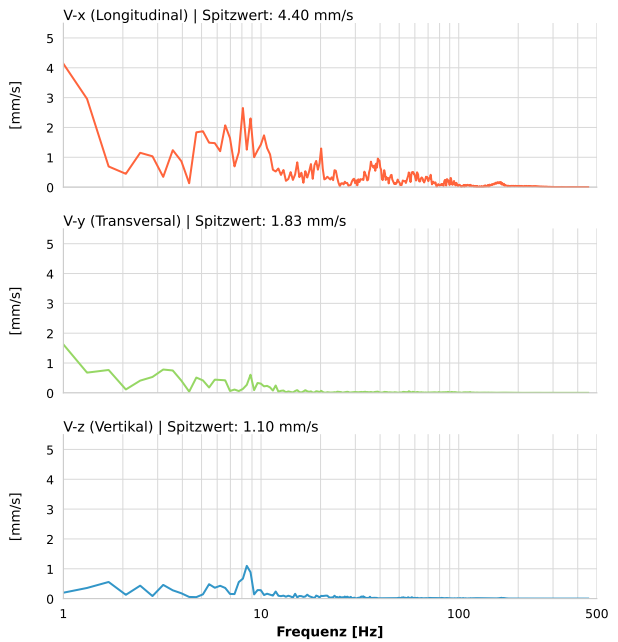
| | |
|------------------|--------------------------|
| Datum: | 12.05.2026 |
| Zeit: | 23:51:58 |
| Event-ID: | 2493-PG4-12052026-215158 |
| Kalibrier Datum: | 12.07.2025 |

Spitzwerte

| V-x (Longitudinal) | V-y (Transversal) | V-z (Vertikal) |
|--------------------|-------------------|------------------|
| 4.40 mm/s | 1.83 mm/s | 1.10 mm/s |
| 0.9 Hz | 0.8 Hz | 8.5 Hz |
| 87.91% von Limit | 36.64% von Limit | 21.97% von Limit |

V-n (Vektorsumme): 4.40 mm/s

SPEKTRALANALYSE - KOMPONENTEN FFT



| Kanal | Spitzwert | Spektrum 25% | Spektrum 50% | Spektrum 75% |
|-------|-----------|--------------|--------------|--------------|
| X | 4.40 mm/s | 8.8 Hz | 36.0 Hz | 72.9 Hz |
| Y | 1.83 mm/s | 2.4 Hz | 7.3 Hz | 45.0 Hz |
| Z | 1.10 mm/s | 5.8 Hz | 10.0 Hz | 49.9 Hz |

SPEKTRALANALYSE - FFT (DIN 4150-3)

