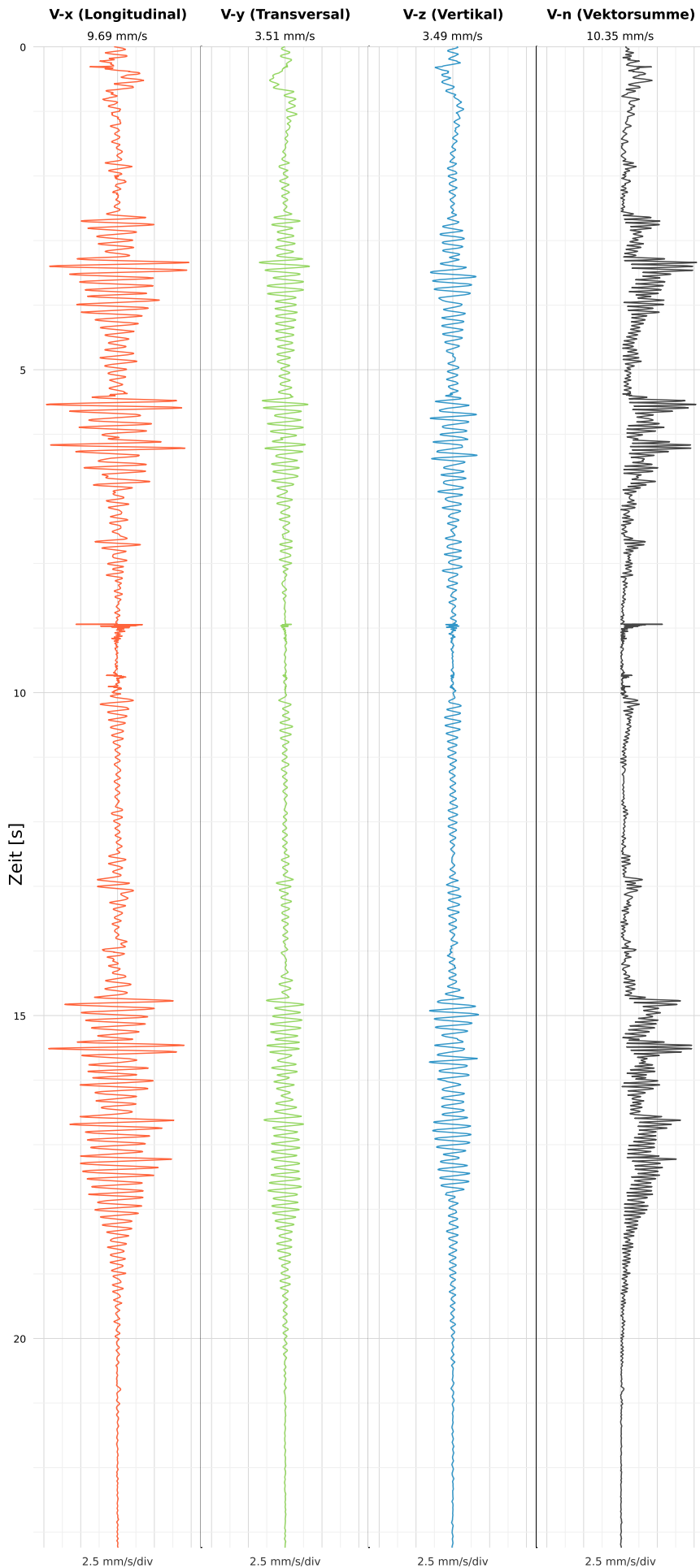


SCHWINGGESCHWINDIGKEIT



DATEI: 2493-PG4-12052026-205455_raw.csv

Aufzeichnungsdauer: 23.23 s | Abtastrate: 1000 Hz

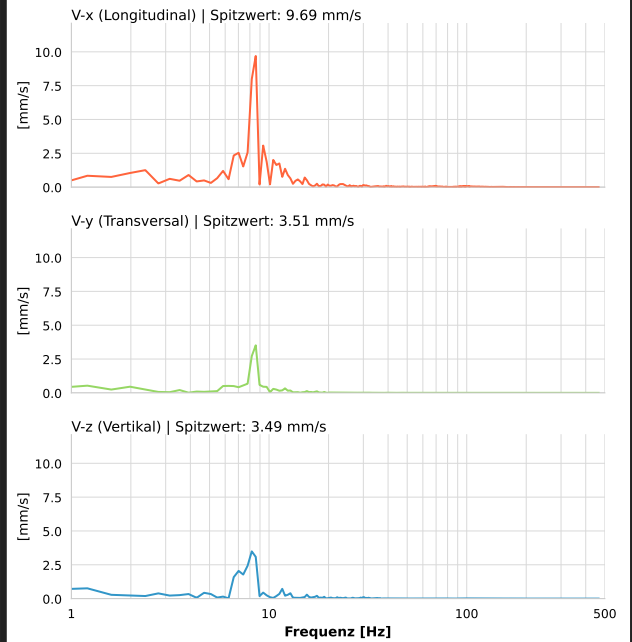
| | |
|-------------------------|--------------------------|
| Datum: | 12.05.2026 |
| Zeit: | 22:54:55 |
| Event-ID: | 2493-PG4-12052026-205455 |
| Kalibrier Datum: | 12.07.2025 |

Spitzwerte

| V-x (Longitudinal) | V-y (Transversal) | V-z (Vertikal) |
|--------------------|-------------------|------------------|
| 9.69 mm/s | 3.51 mm/s | 3.49 mm/s |
| 8.4 Hz | 8.4 Hz | 8.4 Hz |
| 193.86% von Limit | 70.27% von Limit | 69.82% von Limit |

V-n (Vektorsumme): 10.35 mm/s

SPEKTRALANALYSE - KOMPONENTEN FFT



| Kanal | Spitzwert | Spektrum 25% | Spektrum 50% | Spektrum 75% |
|-------|-----------|--------------|--------------|--------------|
| X | 9.69 mm/s | 7.8 Hz | 8.6 Hz | 15.2 Hz |
| Y | 3.51 mm/s | 6.6 Hz | 8.6 Hz | 9.7 Hz |
| Z | 3.49 mm/s | 7.0 Hz | 8.2 Hz | 12.1 Hz |

SPEKTRALANALYSE - FFT (DIN 4150-3)

