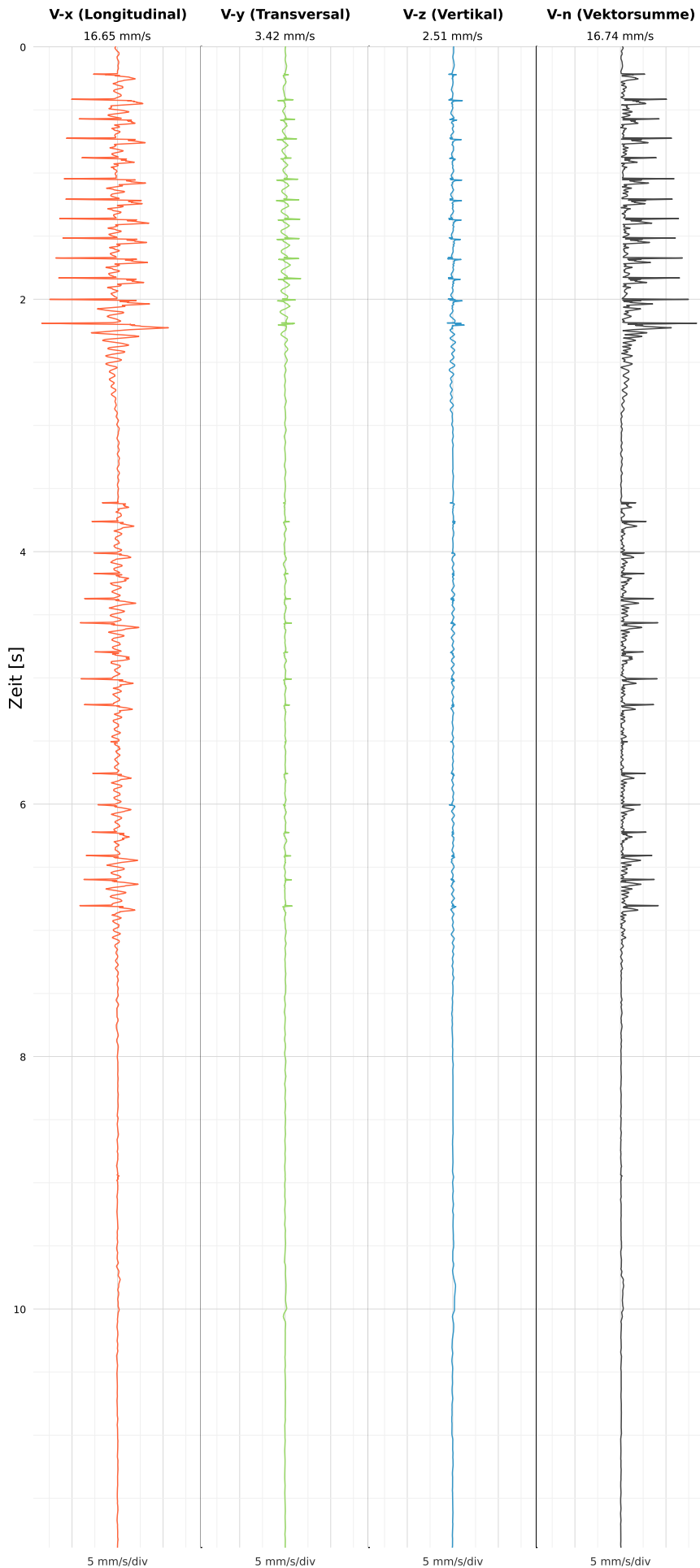


SCHWINGGESCHWINDIGKEIT



DATEI: 2493-PG4-12052026-175439_raw.csv

Aufzeichnungsdauer: 11.89 s | Abtastrate: 1000 Hz

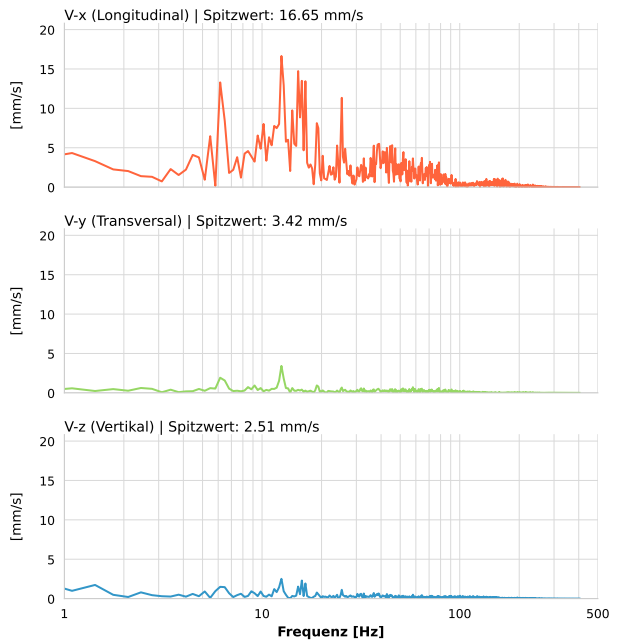
| | |
|------------------|--------------------------|
| Datum: | 12.05.2026 |
| Zeit: | 19:54:39 |
| Event-ID: | 2493-PG4-12052026-175439 |
| Kalibrier Datum: | 12.07.2025 |

Spitzwerte

| V-x (Longitudinal) | V-y (Transversal) | V-z (Vertikal) |
|--------------------|-------------------|------------------|
| 16.65 mm/s | 3.42 mm/s | 2.51 mm/s |
| 15.6 Hz | 12.5 Hz | 15.6 Hz |
| 259.69% von Limit | 60.78% von Limit | 39.18% von Limit |

V-n (Vektorsumme): 16.74 mm/s

SPEKTRALANALYSE - KOMPONENTEN FFT



| Kanal | Spitzwert | Spektrum 25% | Spektrum 50% | Spektrum 75% |
|-------|------------|--------------|--------------|--------------|
| X | 16.65 mm/s | 15.2 Hz | 38.4 Hz | 70.1 Hz |
| Y | 3.42 mm/s | 16.9 Hz | 52.2 Hz | 90.6 Hz |
| Z | 2.51 mm/s | 15.9 Hz | 48.5 Hz | 111.8 Hz |

SPEKTRALANALYSE - FFT (DIN 4150-3)

