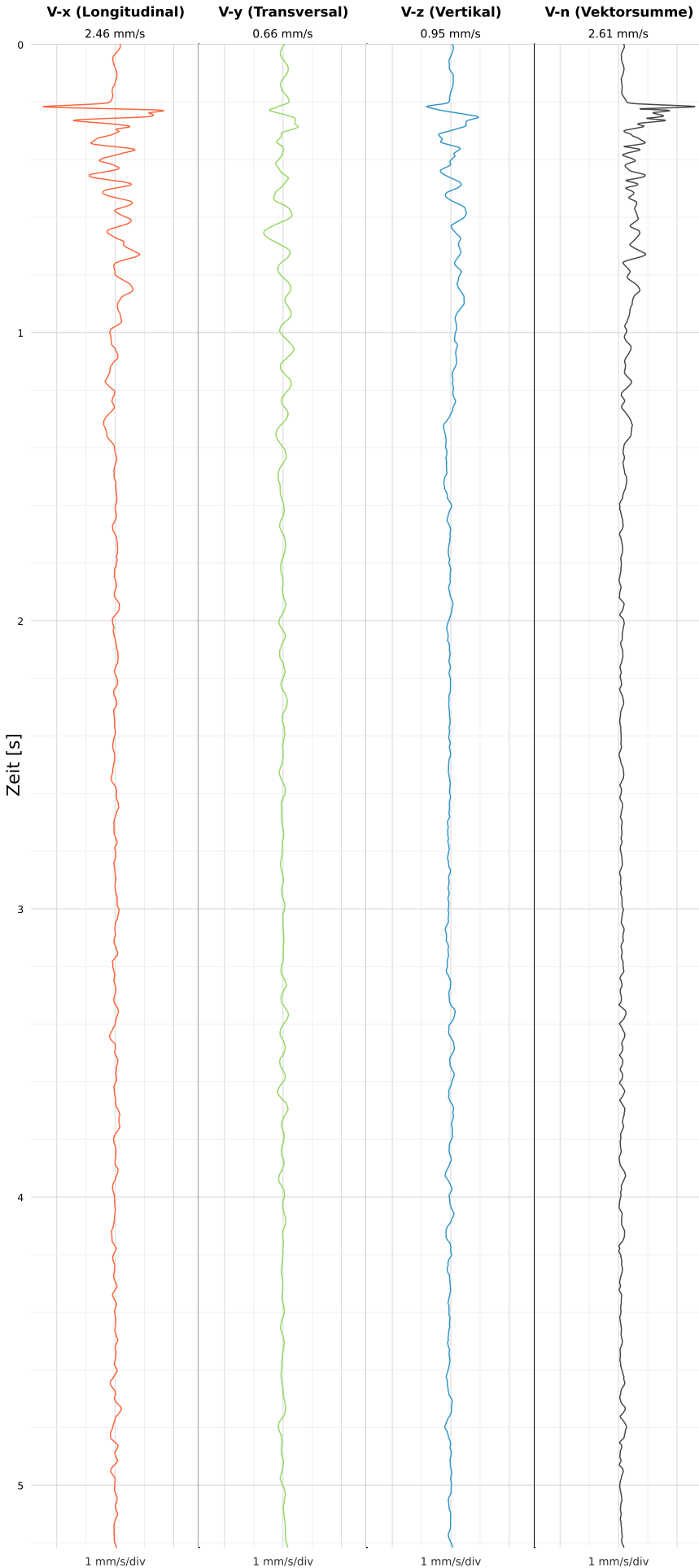


SCHWINGGESCHWINDIGKEIT



DATEI: 2493-PG4-12052026-173631_raw.csv

Aufzeichnungsdauer: 5.22 s | Abtastrate: 1000 Hz

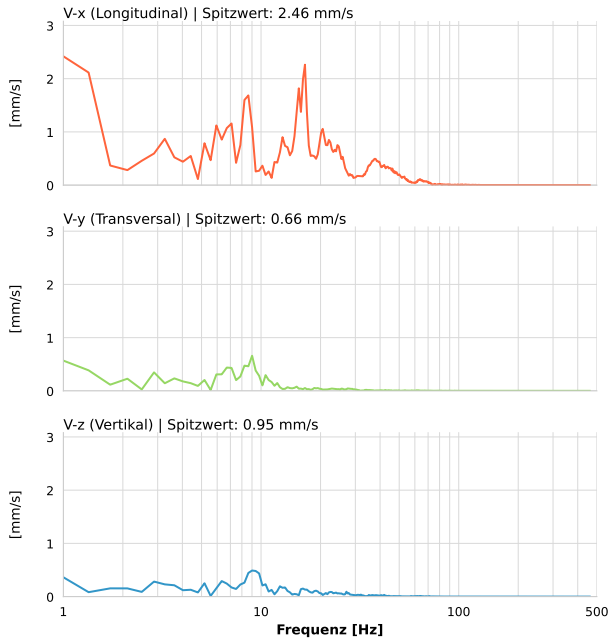
| | |
|------------------|--------------------------|
| Datum: | 12.05.2026 |
| Zeit: | 19:36:31 |
| Event-ID: | 2493-PG4-12052026-173631 |
| Kalibrier Datum: | 12.07.2025 |

Spitzwerte

| V-x (Longitudinal) | V-y (Transversal) | V-z (Vertikal) |
|--------------------|-------------------|------------------|
| 2.46 mm/s | 0.66 mm/s | 0.95 mm/s |
| 1.0 Hz | 9.0 Hz | 0.4 Hz |
| 49.28% von Limit | 13.19% von Limit | 19.00% von Limit |

V-n (Vektorsumme): 2.61 mm/s

SPEKTRALANALYSE - KOMPONENTEN FFT



| Kanal | Spitzwert | Spektrum 25% | Spektrum 50% | Spektrum 75% |
|-------|-----------|--------------|--------------|--------------|
| X | 2.46 mm/s | 9.0 Hz | 18.2 Hz | 35.5 Hz |
| Y | 0.66 mm/s | 5.2 Hz | 8.6 Hz | 14.8 Hz |
| Z | 0.95 mm/s | 4.0 Hz | 9.4 Hz | 19.4 Hz |

SPEKTRALANALYSE - FFT (DIN 4150-3)

