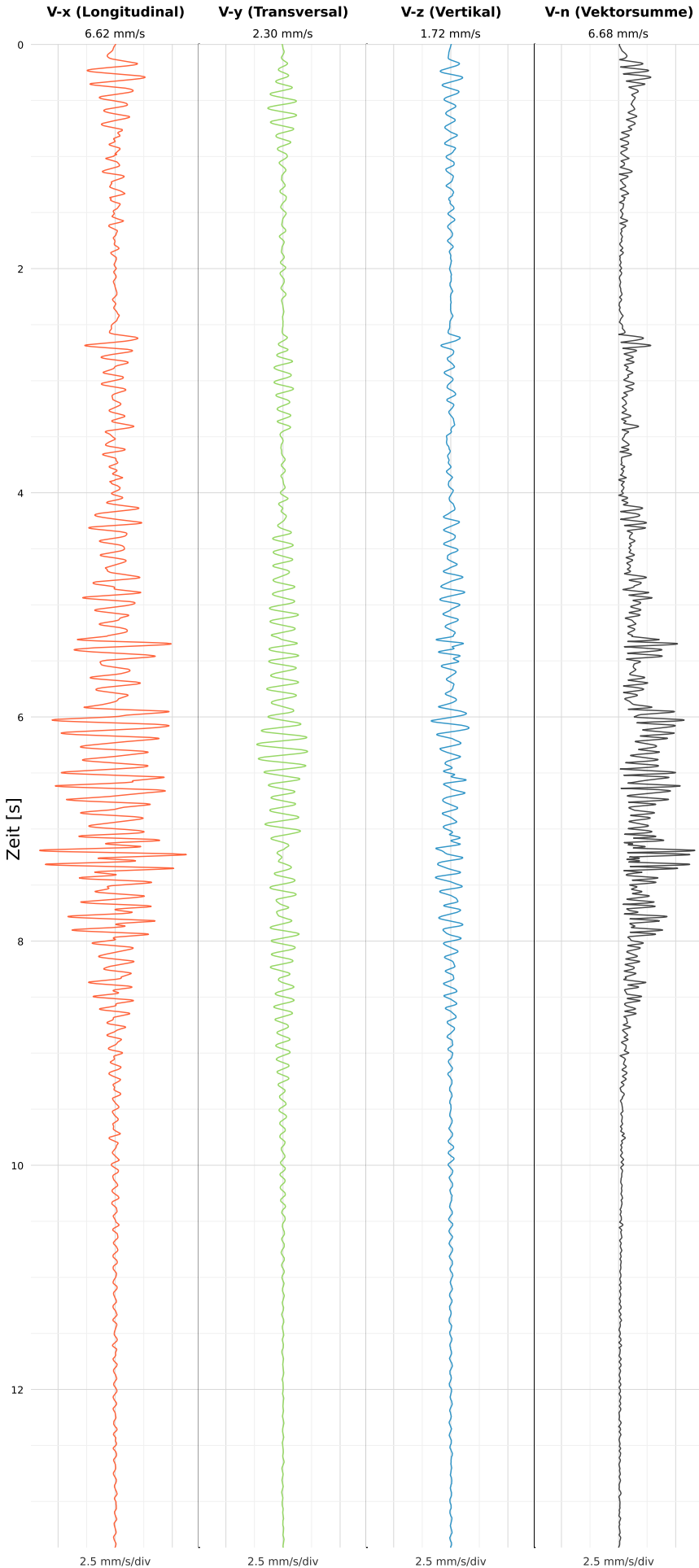


SCHWINGGESCHWINDIGKEIT



DATEI: 2493-PG4-12052026-164419\_raw.csv

Aufzeichnungsdauer: 13.41 s | Abtastrate: 1000 Hz

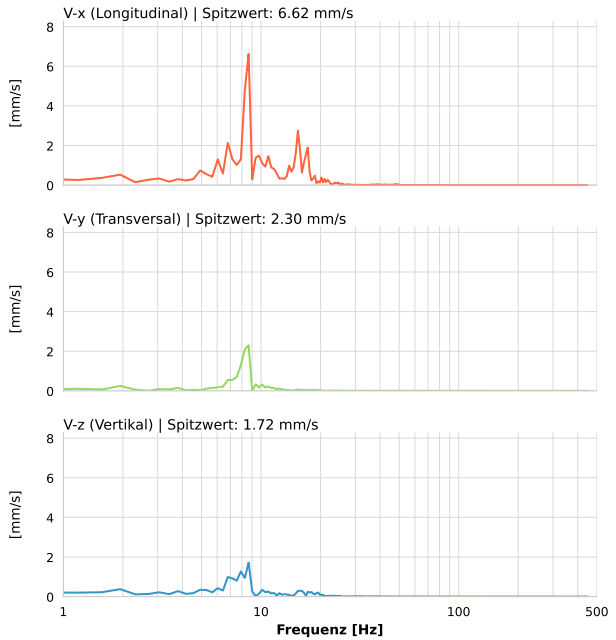
|                  |                          |
|------------------|--------------------------|
| Datum:           | 12.05.2026               |
| Zeit:            | 18:44:19                 |
| Event-ID:        | 2493-PG4-12052026-164419 |
| Kalibrier Datum: | 12.07.2025               |

Spitzwerte

| V-x (Longitudinal) | V-y (Transversal) | V-z (Vertikal)   |
|--------------------|-------------------|------------------|
| 6.62 mm/s          | 2.30 mm/s         | 1.72 mm/s        |
| 8.4 Hz             | 8.1 Hz            | 8.4 Hz           |
| 132.40% von Limit  | 46.02% von Limit  | 34.33% von Limit |

V-n (Vektorsumme): 6.68 mm/s

SPEKTRALANALYSE - KOMPONENTEN FFT



| Kanal | Spitzwert | Spektrum 25% | Spektrum 50% | Spektrum 75% |
|-------|-----------|--------------|--------------|--------------|
| X     | 6.62 mm/s | 8.3 Hz       | 10.1 Hz      | 15.4 Hz      |
| Y     | 2.30 mm/s | 7.5 Hz       | 8.3 Hz       | 9.4 Hz       |
| Z     | 1.72 mm/s | 6.8 Hz       | 8.3 Hz       | 13.9 Hz      |

SPEKTRALANALYSE - FFT (DIN 4150-3)

