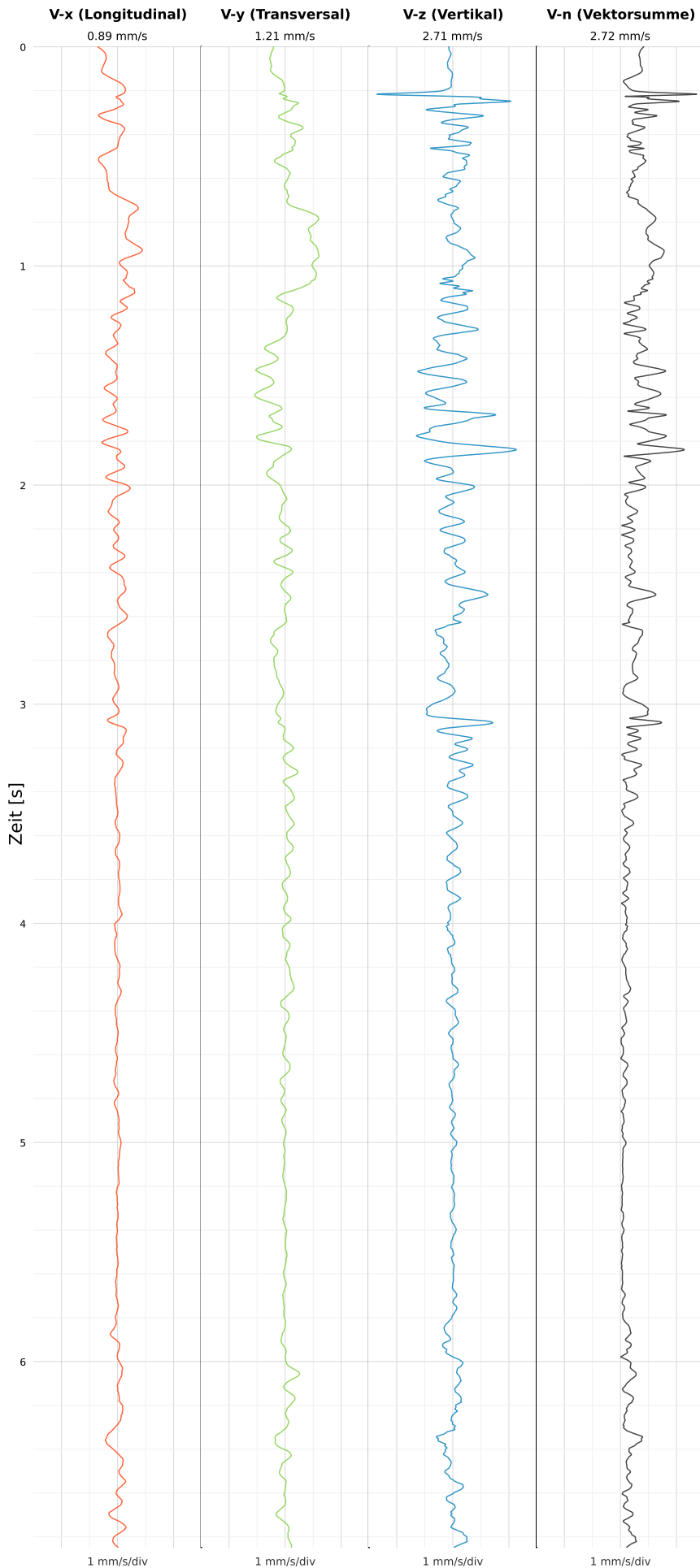


SCHWINGGESCHWINDIGKEIT



DATEI: 2493-PG4-12052026-134451_raw.csv

Aufzeichnungsdauer: 6.85 s | Abtastrate: 1000 Hz

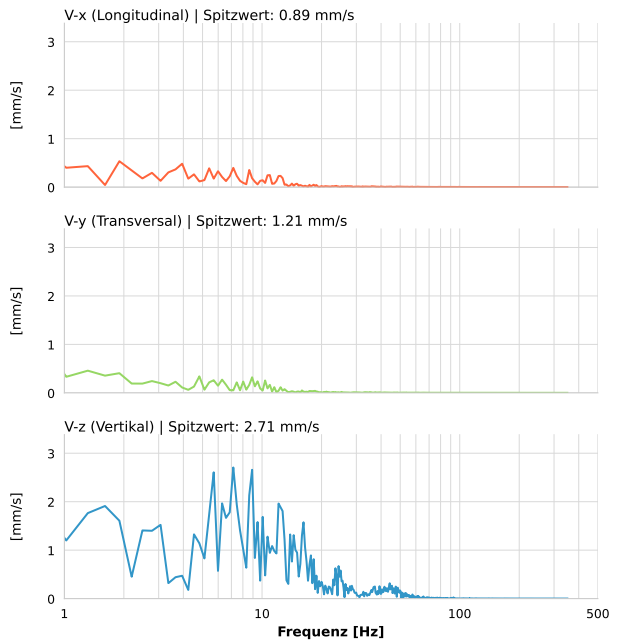
| | |
|-------------------------|--------------------------|
| Datum: | 12.05.2026 |
| Zeit: | 15:44:51 |
| Event-ID: | 2493-PG4-12052026-134451 |
| Kalibrier Datum: | 12.07.2025 |

Spitzwerte

| V-x (Longitudinal) | V-y (Transversal) | V-z (Vertikal) |
|--------------------|-------------------|------------------|
| 0.89 mm/s | 1.21 mm/s | 2.71 mm/s |
| 0.7 Hz | 0.7 Hz | 7.2 Hz |
| 17.78% von Limit | 24.17% von Limit | 54.12% von Limit |

V-n (Vektorsumme): 2.72 mm/s

SPEKTRALANALYSE - KOMPONENTEN FFT



| Kanal | Spitzwert | Spektrum 25% | Spektrum 50% | Spektrum 75% |
|-------|-----------|--------------|--------------|--------------|
| X | 0.89 mm/s | 2.8 Hz | 7.2 Hz | 15.0 Hz |
| Y | 1.21 mm/s | 1.3 Hz | 5.7 Hz | 11.8 Hz |
| Z | 2.71 mm/s | 6.3 Hz | 11.2 Hz | 18.8 Hz |

SPEKTRALANALYSE - FFT (DIN 4150-3)

