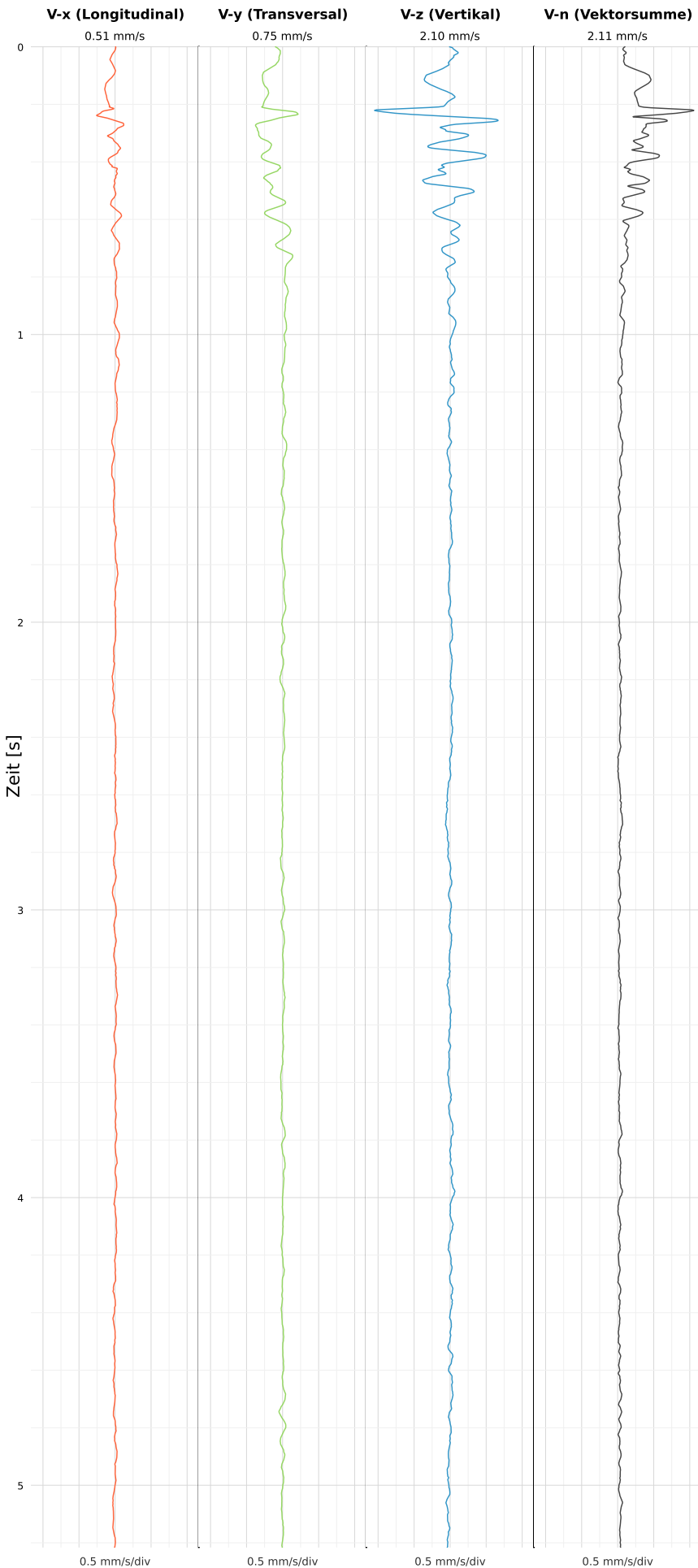


SCHWINGGESCHWINDIGKEIT



DATEI: 2493-PG4-12052026-120846_raw.csv

Aufzeichnungsdauer: 5.22 s | Abtastrate: 1000 Hz

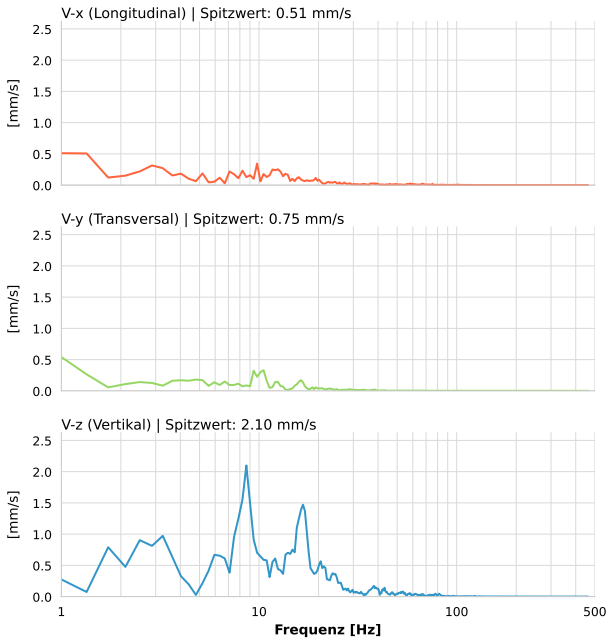
| | |
|------------------|--------------------------|
| Datum: | 12.05.2026 |
| Zeit: | 14:08:46 |
| Event-ID: | 2493-PG4-12052026-120846 |
| Kalibrier Datum: | 12.07.2025 |

Spitzwerte

| V-x (Longitudinal) | V-y (Transversal) | V-z (Vertikal) |
|--------------------|-------------------|------------------|
| 0.51 mm/s | 0.75 mm/s | 2.10 mm/s |
| 0.4 Hz | 0.4 Hz | 8.6 Hz |
| 10.24% von Limit | 15.05% von Limit | 41.98% von Limit |

V-n (Vektorsumme): 2.11 mm/s

SPEKTRALANALYSE - KOMPONENTEN FFT



| Kanal | Spitzwert | Spektrum 25% | Spektrum 50% | Spektrum 75% |
|-------|-----------|--------------|--------------|--------------|
| X | 0.51 mm/s | 3.3 Hz | 11.3 Hz | 20.9 Hz |
| Y | 0.75 mm/s | 2.1 Hz | 9.4 Hz | 16.7 Hz |
| Z | 2.10 mm/s | 8.2 Hz | 14.8 Hz | 21.3 Hz |

SPEKTRALANALYSE - FFT (DIN 4150-3)

