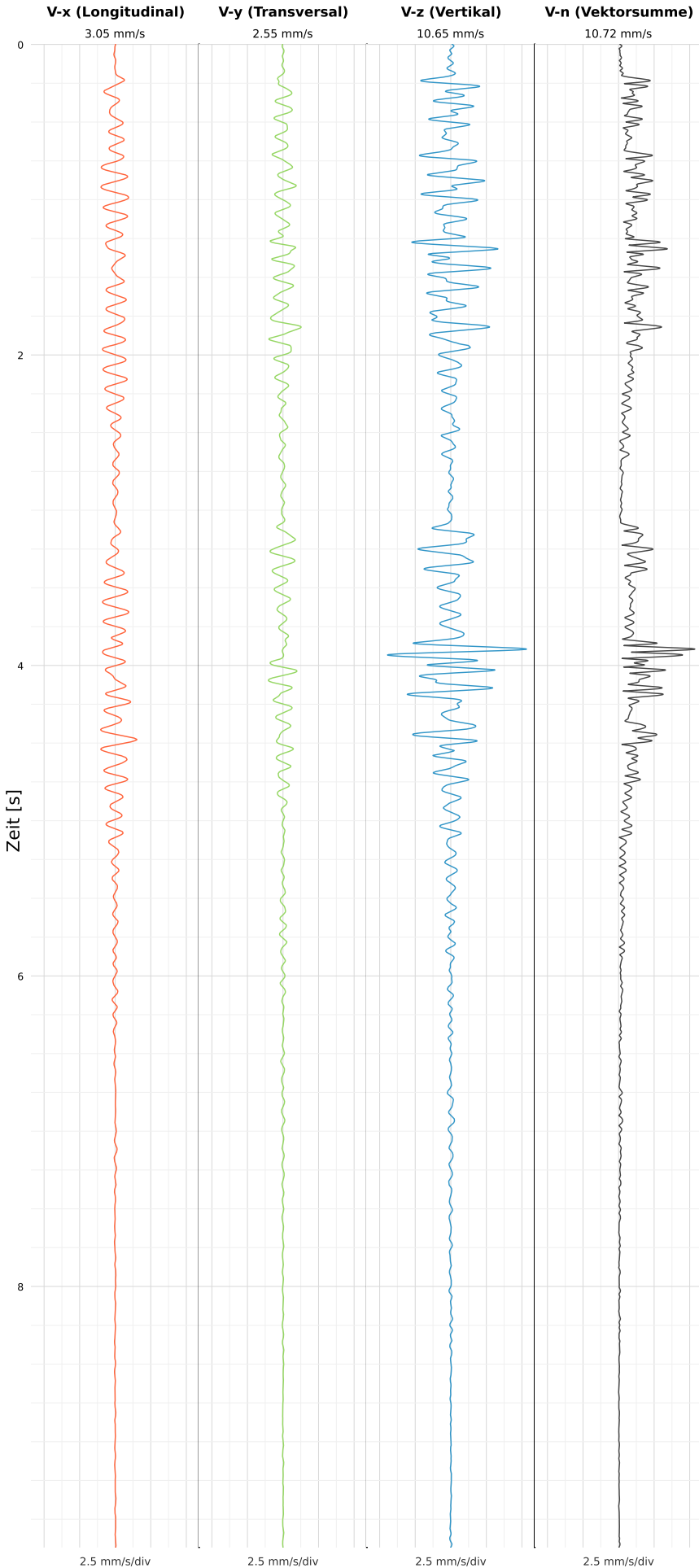


SCHWINGGESCHWINDIGKEIT



DATEI: 2493-PG4-12052026-114149_raw.csv

Aufzeichnungsdauer: 9.68 s | Abtastrate: 1000 Hz

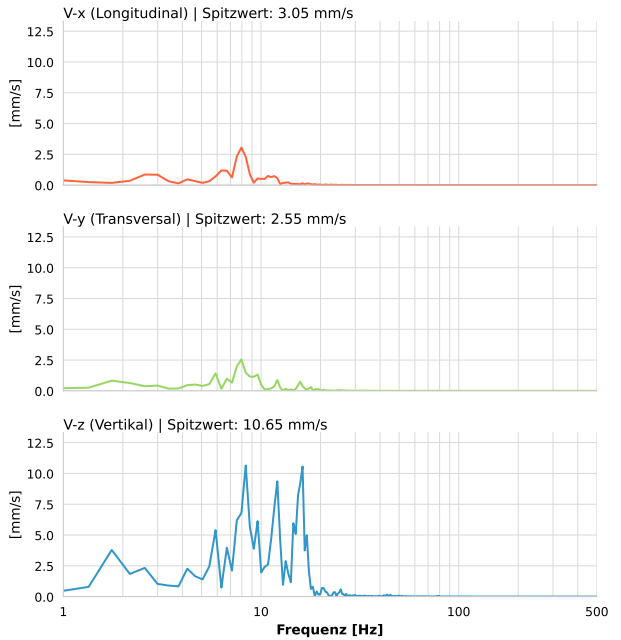
| | |
|------------------|--------------------------|
| Datum: | 12.05.2026 |
| Zeit: | 13:41:49 |
| Event-ID: | 2493-PG4-12052026-114149 |
| Kalibrier Datum: | 12.07.2025 |

Spitzwerte

| V-x (Longitudinal) | V-y (Transversal) | V-z (Vertikal) |
|--------------------|-------------------|-------------------|
| 3.05 mm/s | 2.55 mm/s | 10.65 mm/s |
| 8.3 Hz | 7.7 Hz | 8.6 Hz |
| 60.98% von Limit | 50.97% von Limit | 212.96% von Limit |

V-n (Vektorsumme): 10.72 mm/s

SPEKTRALANALYSE - KOMPONENTEN FFT



| Kanal | Spitzwert | Spektrum 25% | Spektrum 50% | Spektrum 75% |
|-------|------------|--------------|--------------|--------------|
| X | 3.05 mm/s | 6.3 Hz | 8.0 Hz | 10.4 Hz |
| Y | 2.55 mm/s | 5.9 Hz | 8.0 Hz | 11.3 Hz |
| Z | 10.65 mm/s | 8.0 Hz | 11.7 Hz | 15.8 Hz |

SPEKTRALANALYSE - FFT (DIN 4150-3)

