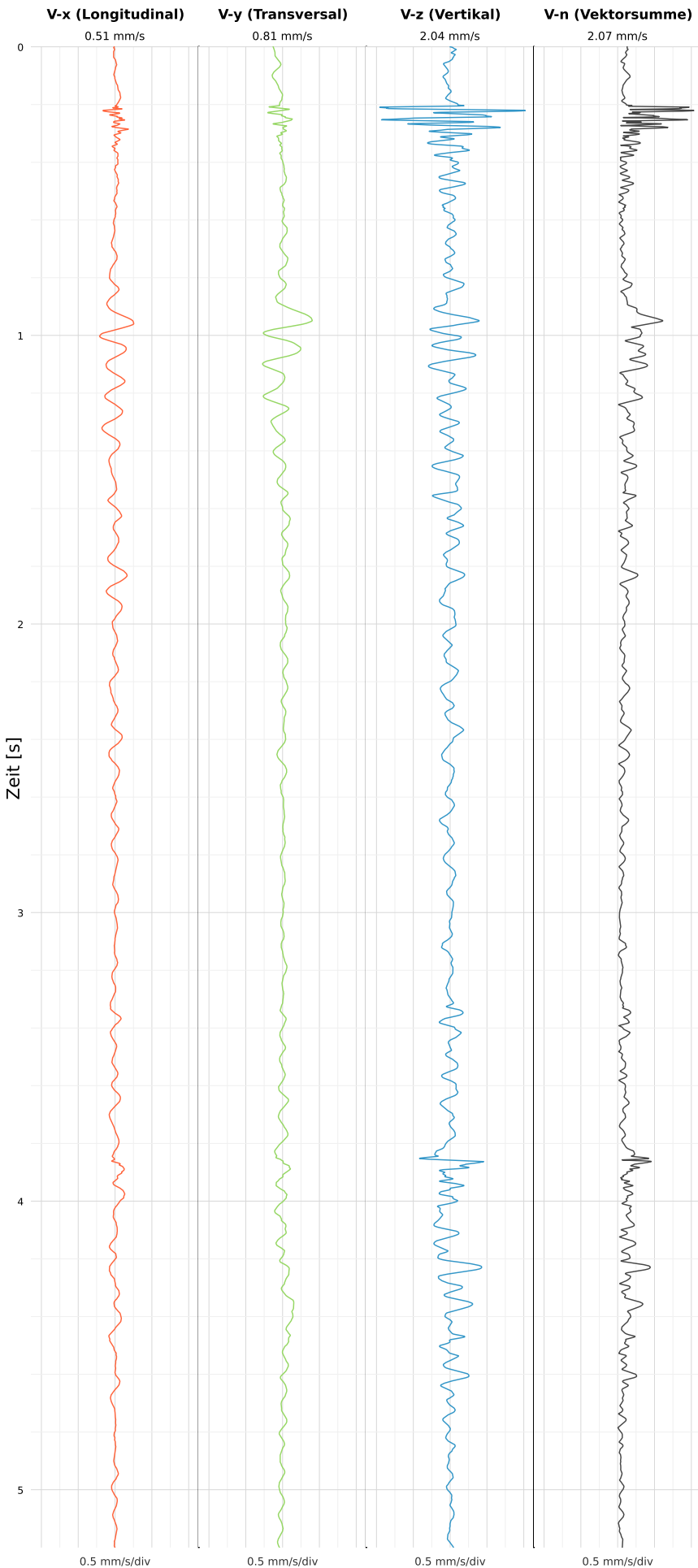


SCHWINGGESCHWINDIGKEIT



DATEI: 2493-PG4-12052026-113028_raw.csv

Aufzeichnungsdauer: 5.20 s | Abtastrate: 1000 Hz

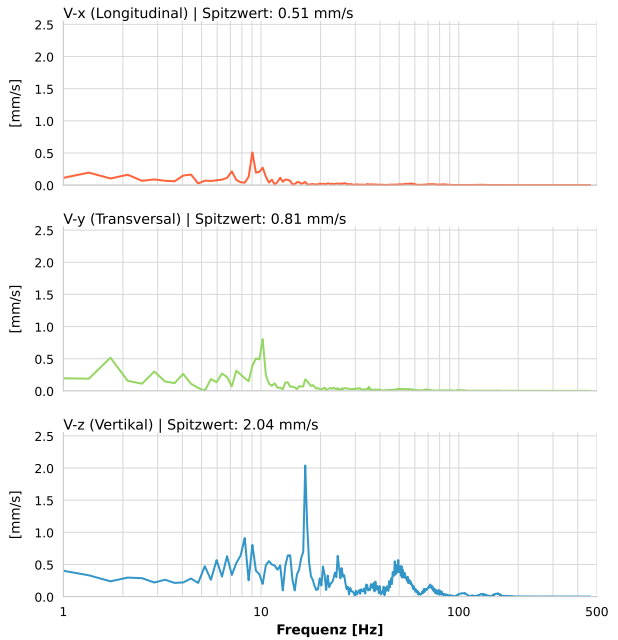
| | |
|------------------|--------------------------|
| Datum: | 12.05.2026 |
| Zeit: | 13:30:28 |
| Event-ID: | 2493-PG4-12052026-113028 |
| Kalibrier Datum: | 12.07.2025 |

Spitzwerte

| V-x (Longitudinal) | V-y (Transversal) | V-z (Vertikal) |
|--------------------|-------------------|------------------|
| 0.51 mm/s | 0.81 mm/s | 2.04 mm/s |
| 8.8 Hz | 0.8 Hz | 16.7 Hz |
| 10.17% von Limit | 16.12% von Limit | 30.52% von Limit |

V-n (Vektorsumme): 2.07 mm/s

SPEKTRALANALYSE - KOMPONENTEN FFT



| Kanal | Spitzwert | Spektrum 25% | Spektrum 50% | Spektrum 75% |
|-------|-----------|--------------|--------------|--------------|
| X | 0.51 mm/s | 6.7 Hz | 10.6 Hz | 49.4 Hz |
| Y | 0.81 mm/s | 6.3 Hz | 10.2 Hz | 31.7 Hz |
| Z | 2.04 mm/s | 14.0 Hz | 30.2 Hz | 55.2 Hz |

SPEKTRALANALYSE - FFT (DIN 4150-3)

